

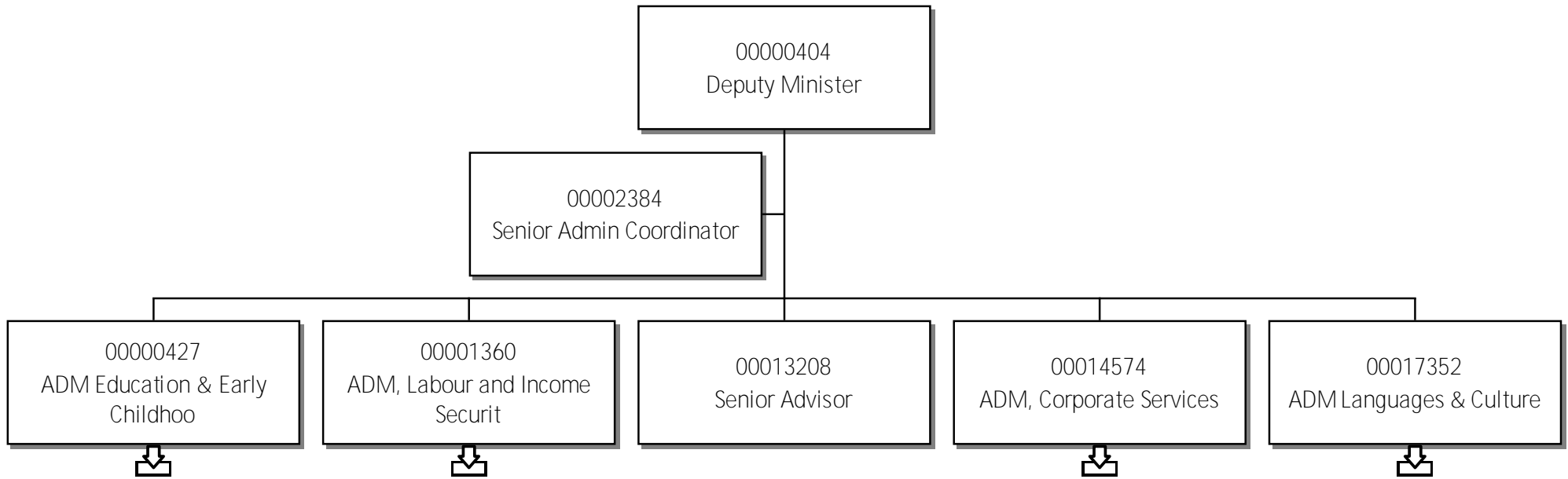


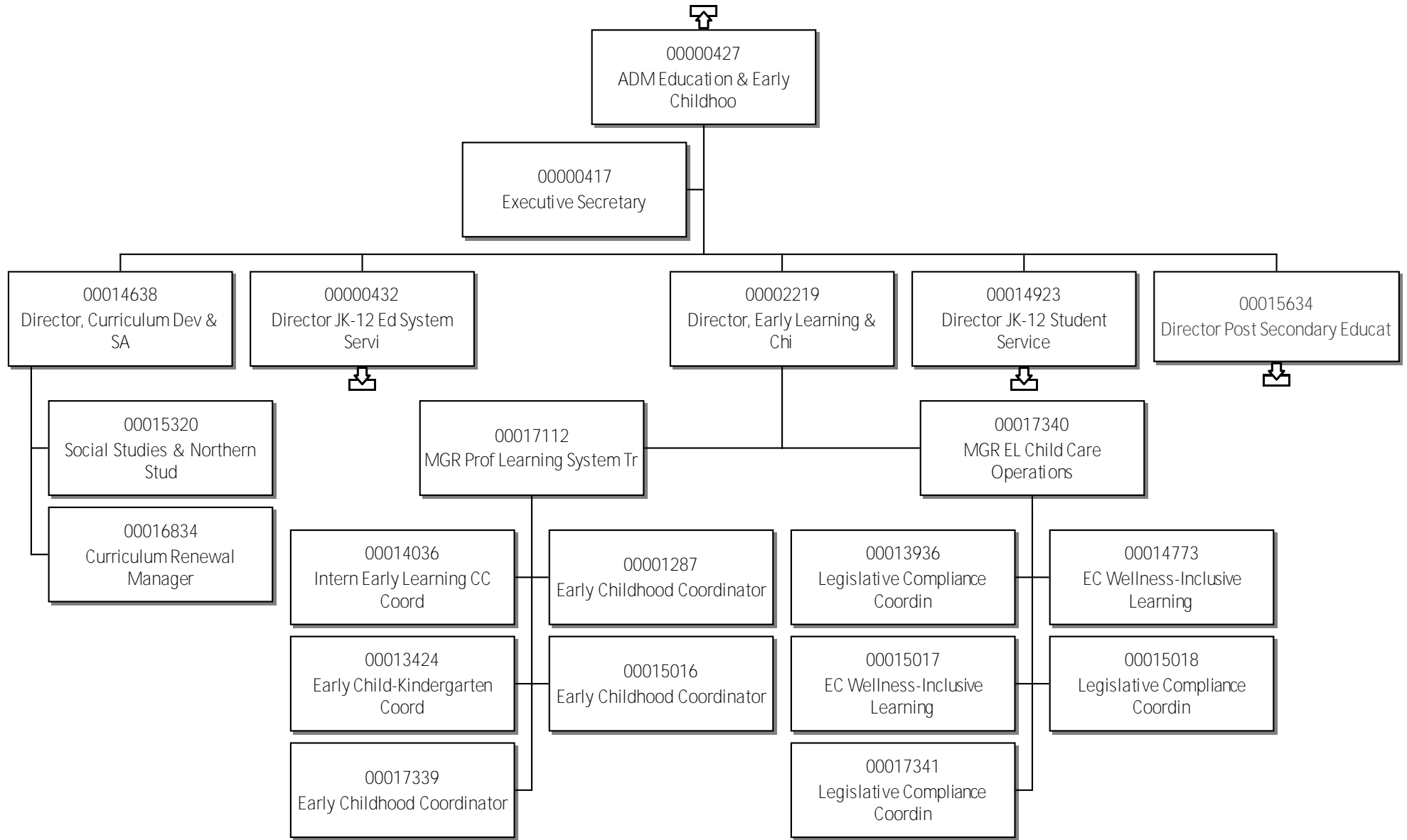
71 - Education, Culture & Employment

Organizational Chart

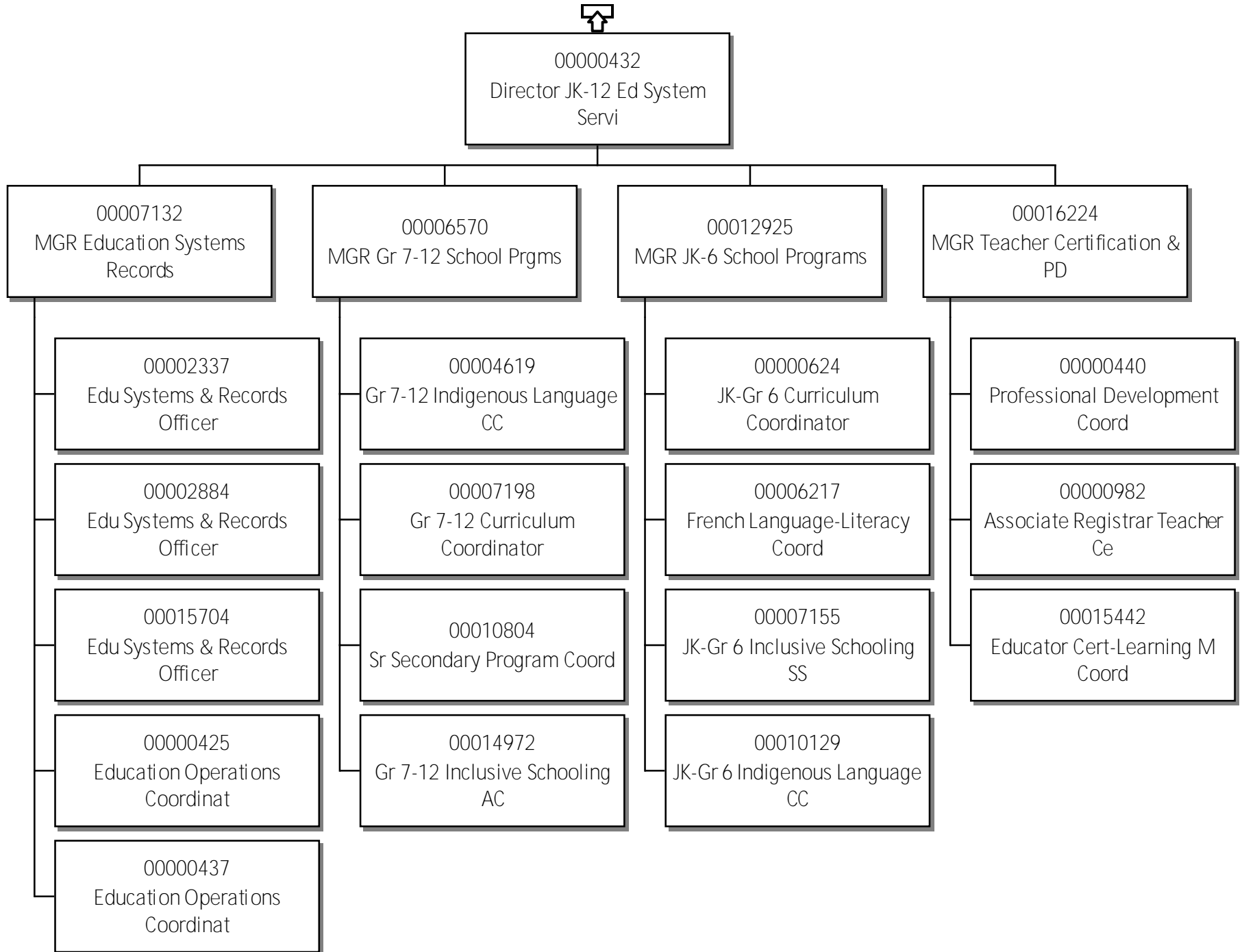
Contents

71-ECE - May 13, 2026 - Web.....	1
Contents.....	2
Deputy Minister.....	3
ADM, Education and Early Childhood.....	4
Director, JK-12 ED System Service.....	5
Director, JK-12 Student Service.....	6
Director Post Secondary Education.....	7
ADM, Labour and Income Securit.....	8
Director, Income Security Prog.....	9
Director, Labour Dev and Stand.....	10
Regional Superintendent - SS.....	11
Regional Superintendent, Sahtu.....	12
Regional Superintendent, Dehcho.....	13
Regional Superintendent NS.....	14
Regional Mgr Income Security Programs.....	15
Regional Manager, Career Dev.....	16
Regional Superintendent - BeauDel.....	17
ADM, Corporate Services.....	18
Director Finance & Cap Plng.....	19
ADM Languages & Culture.....	20
Director, Culture and Heritage.....	21
Asst. Dir., Culture & Heritage.....	22

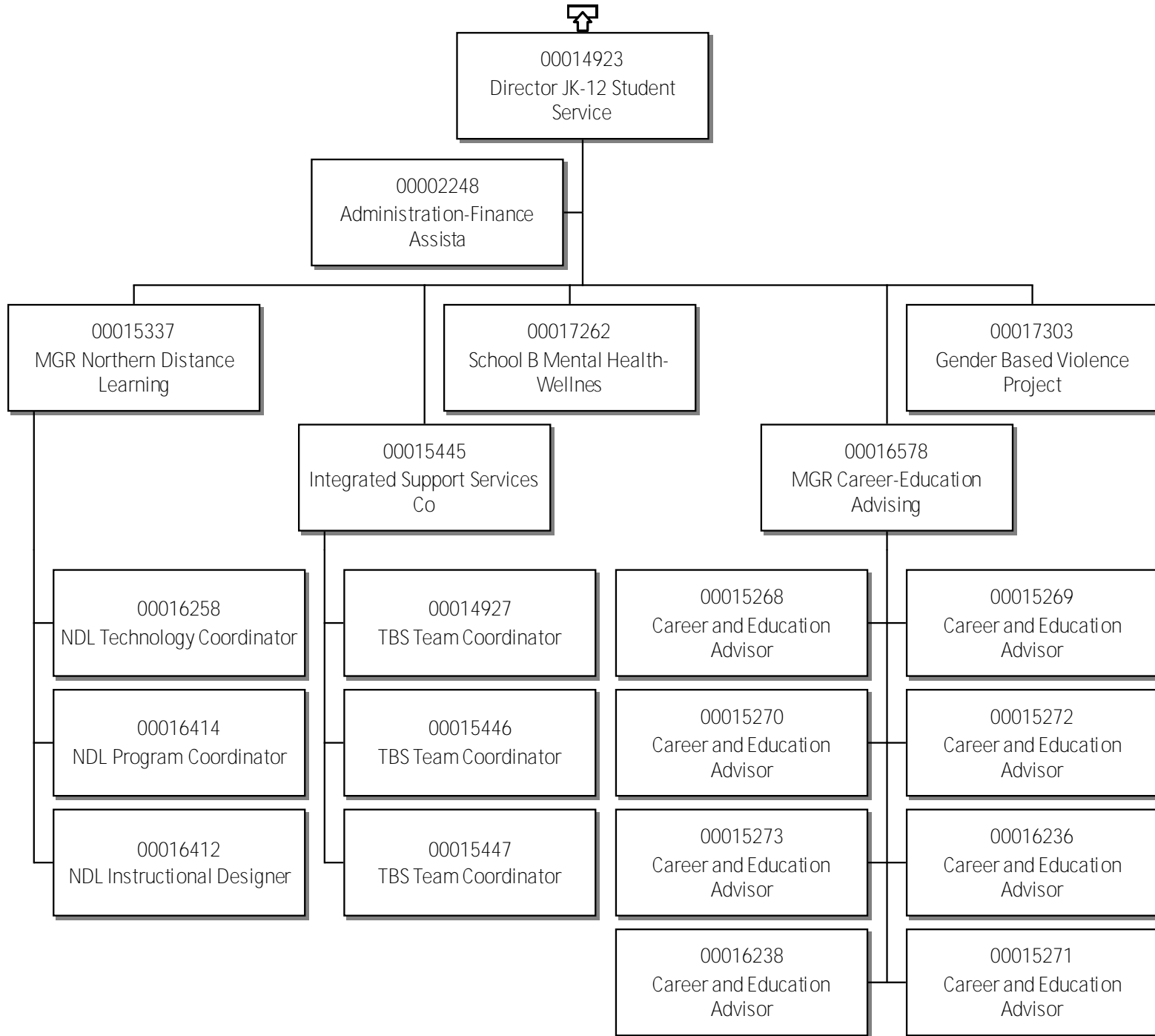




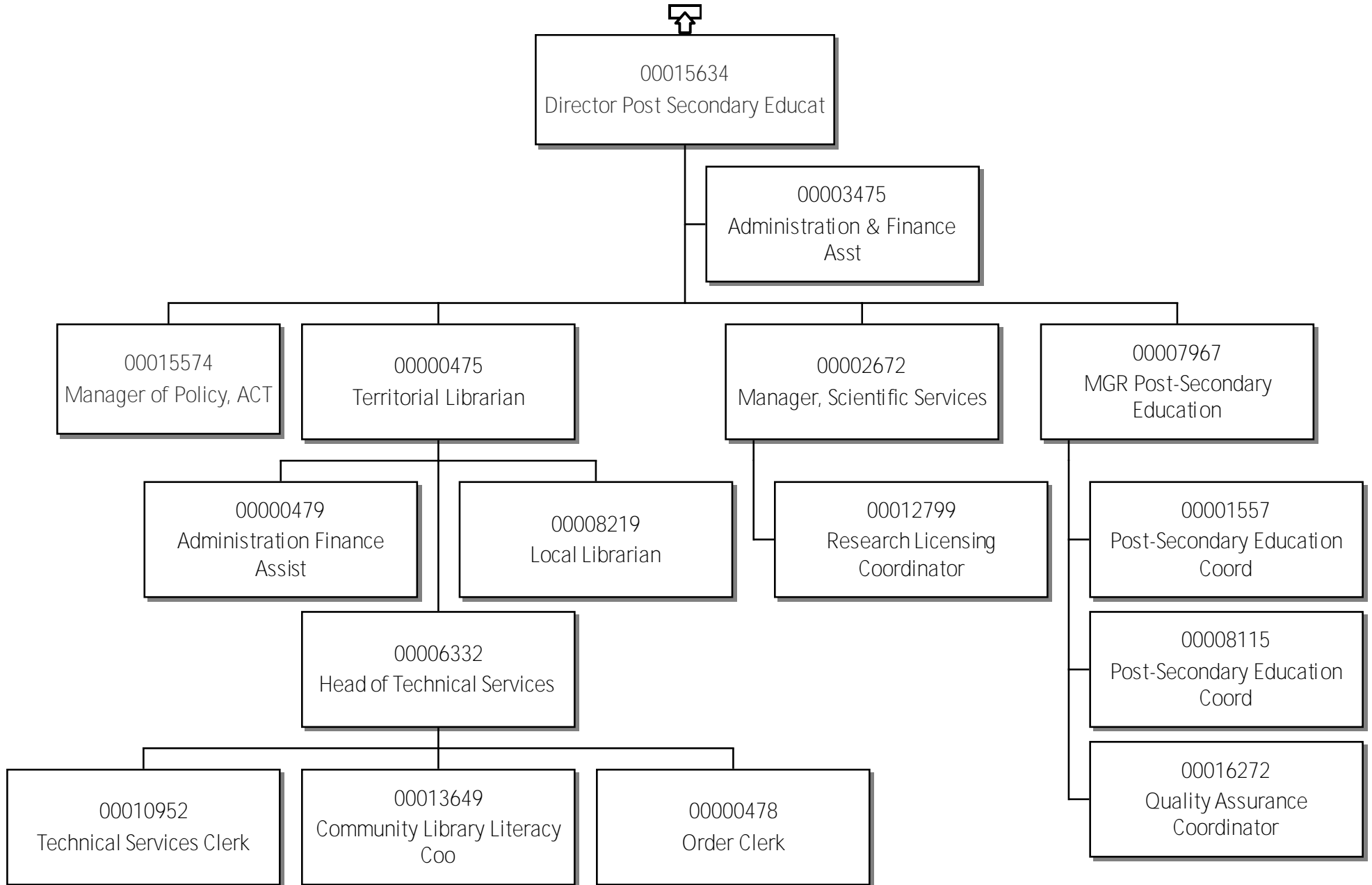
71-Education, Culture & Employment
Director, JK-12 ED System Service

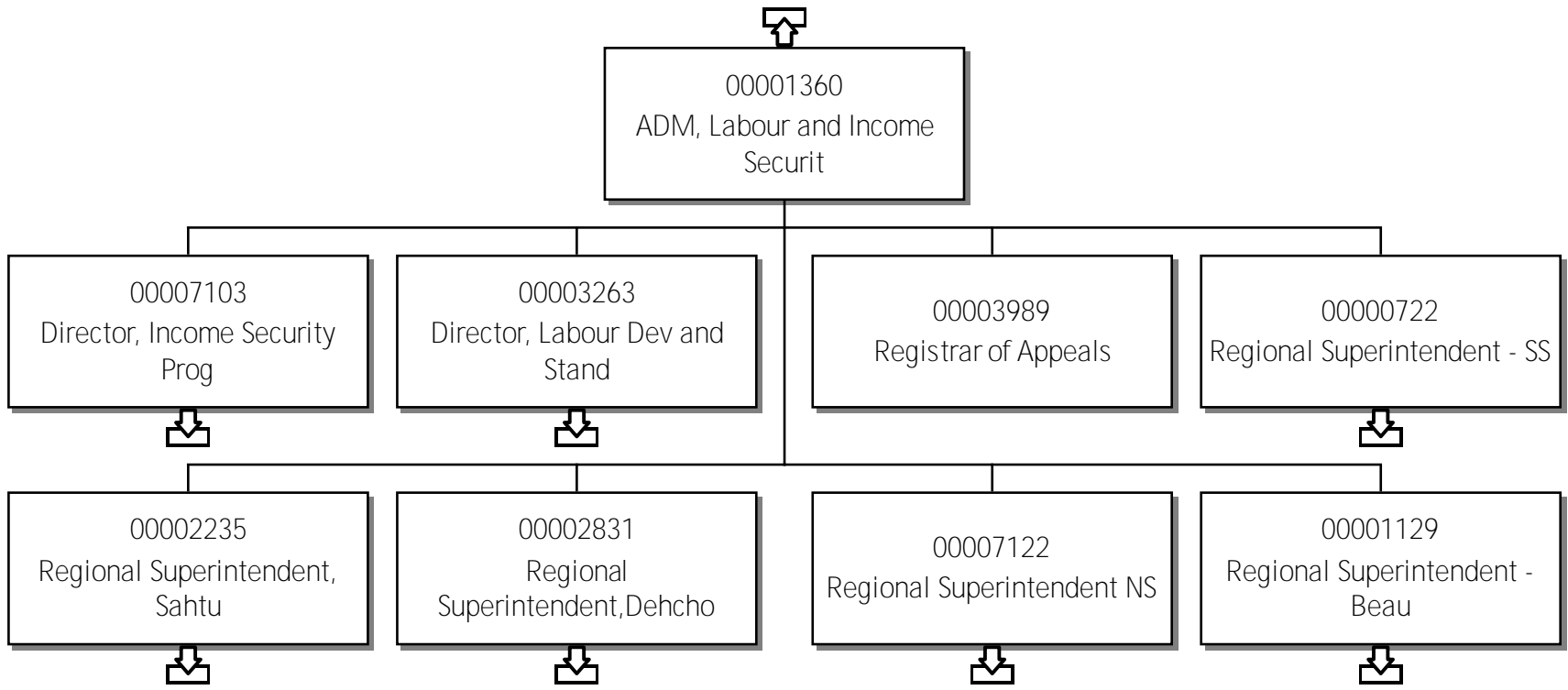


71-Education, Culture & Employment Director, JK-12 Student Service

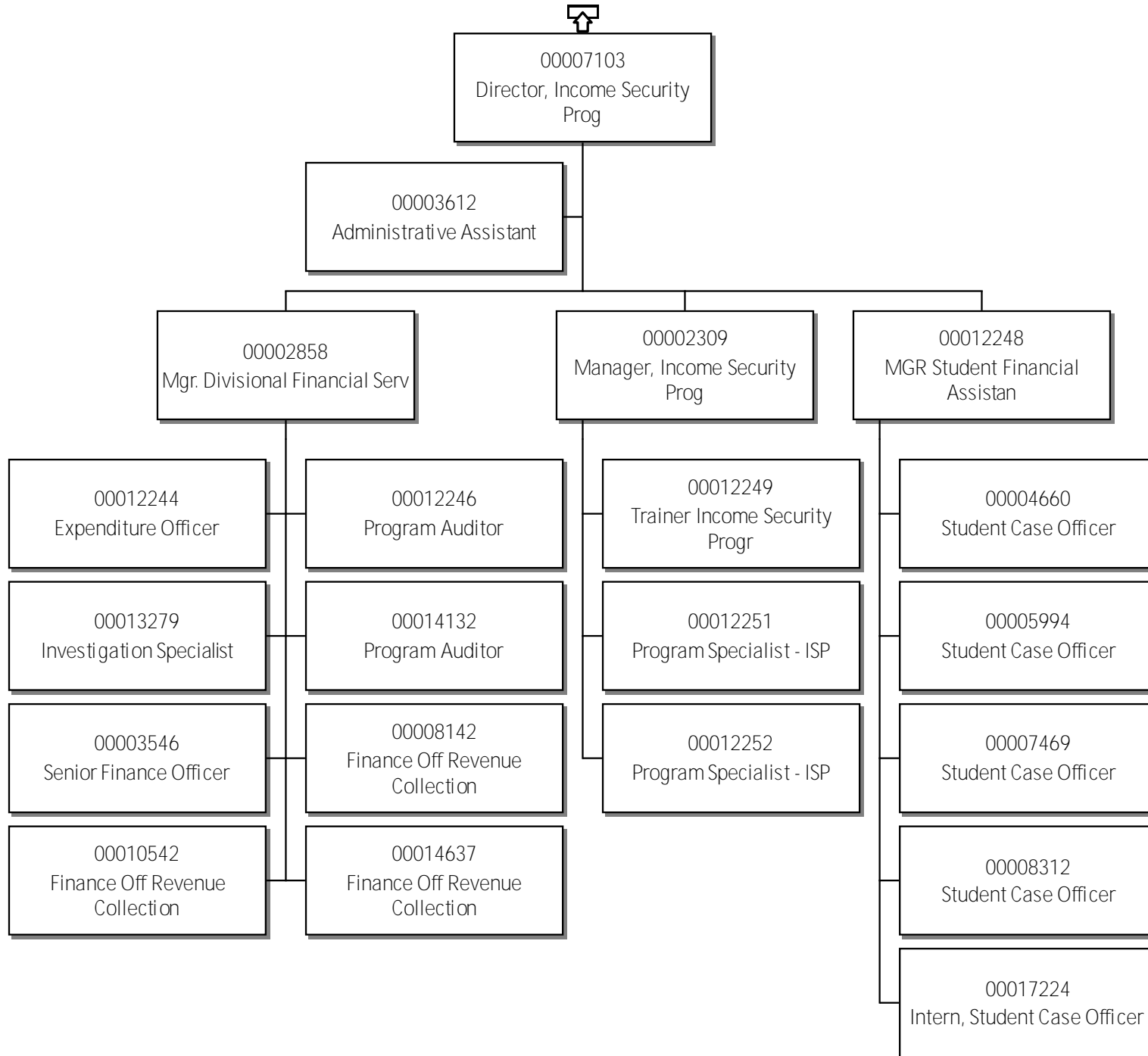


71-Education, Culture & Employment
Director Post Secondary Education

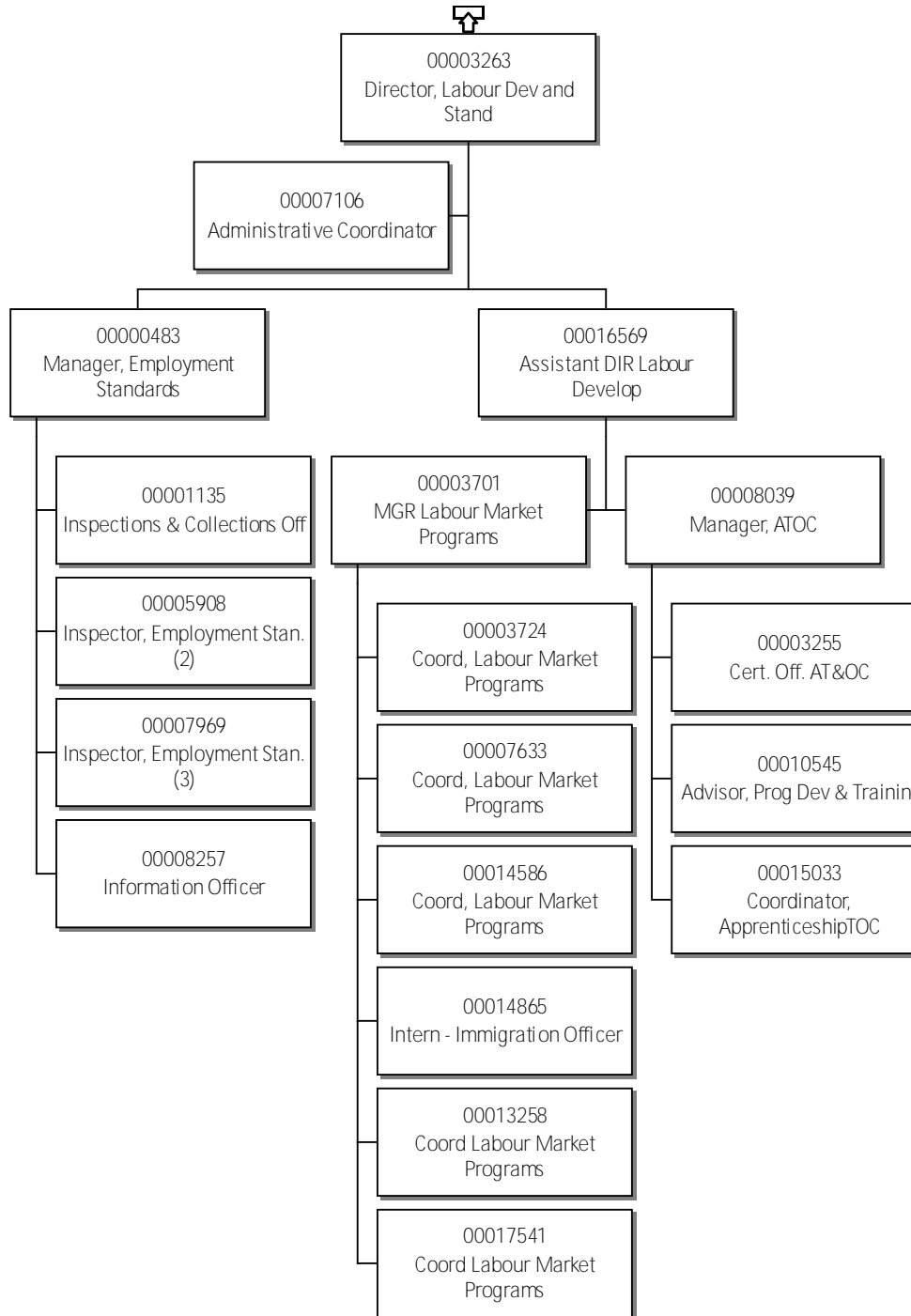


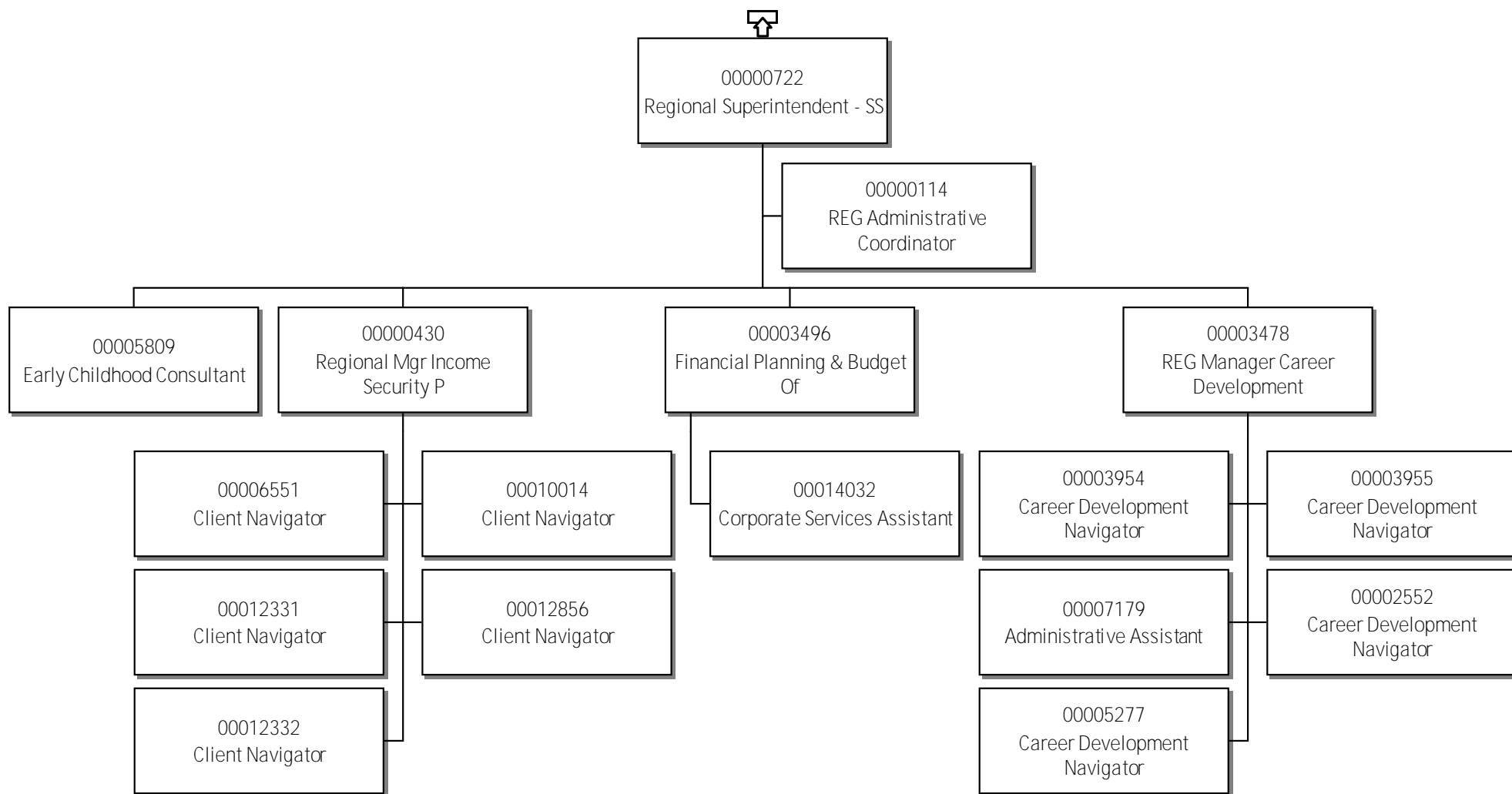


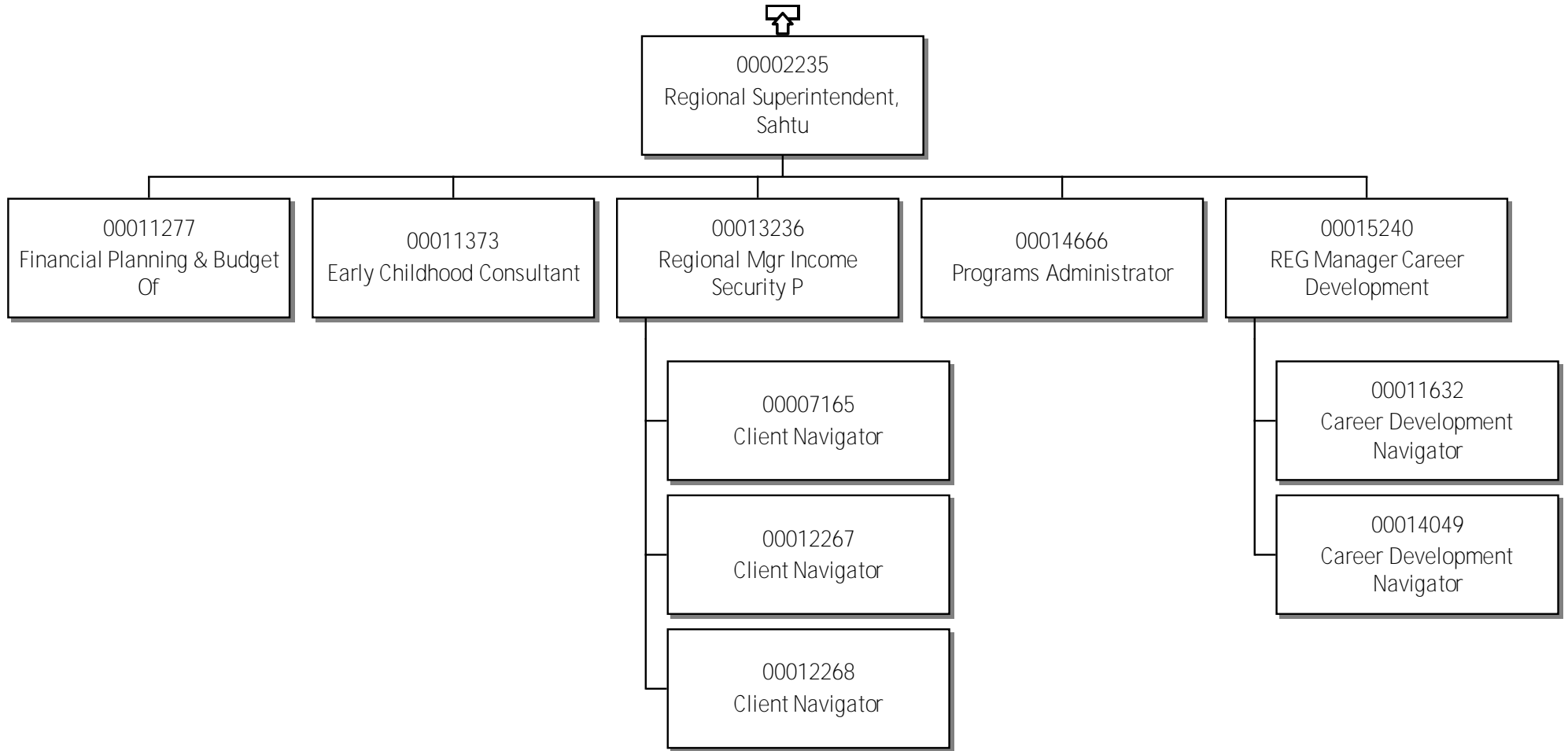
71-Education, Culture & Employment Director, Income Security Prog

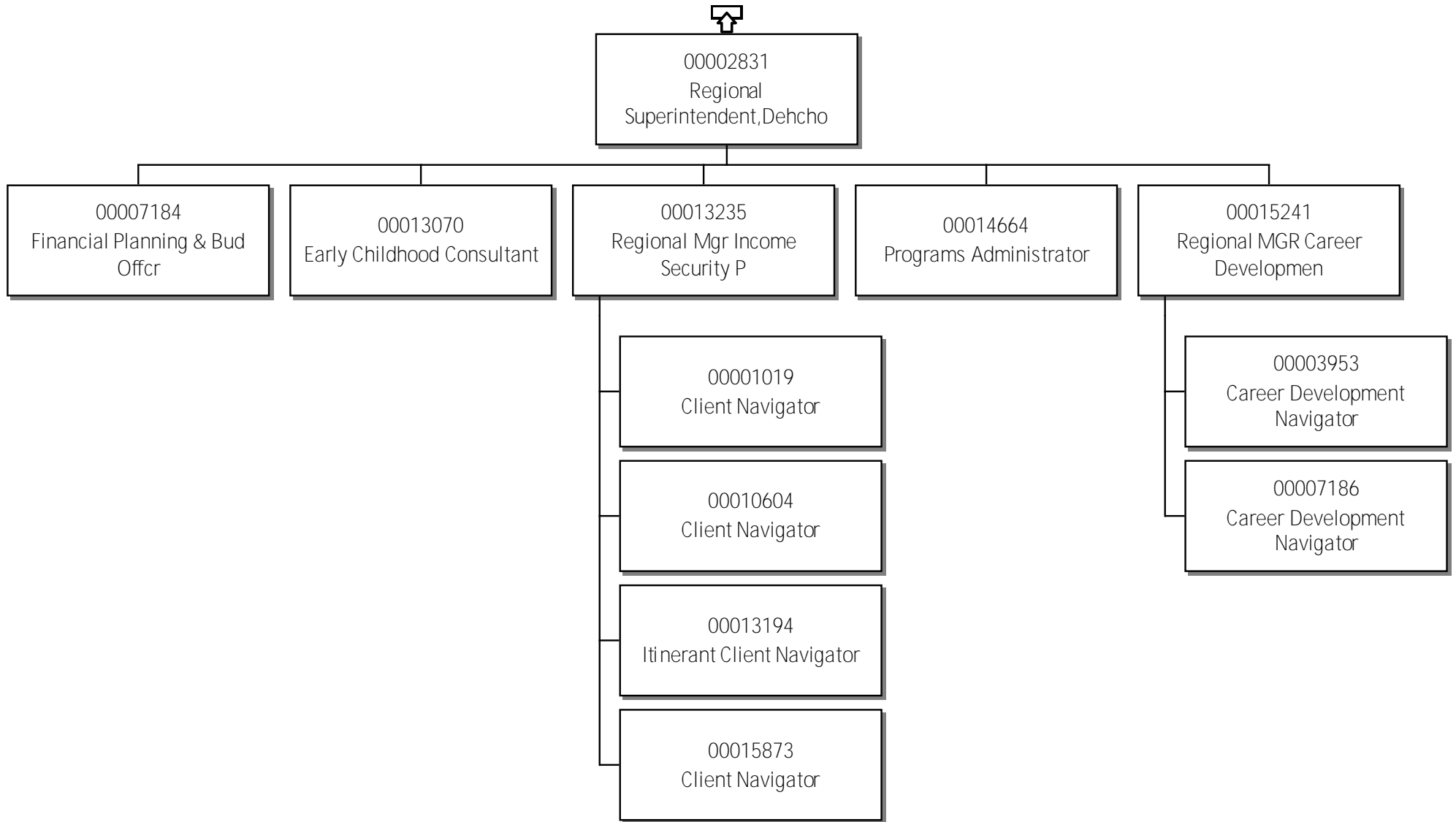


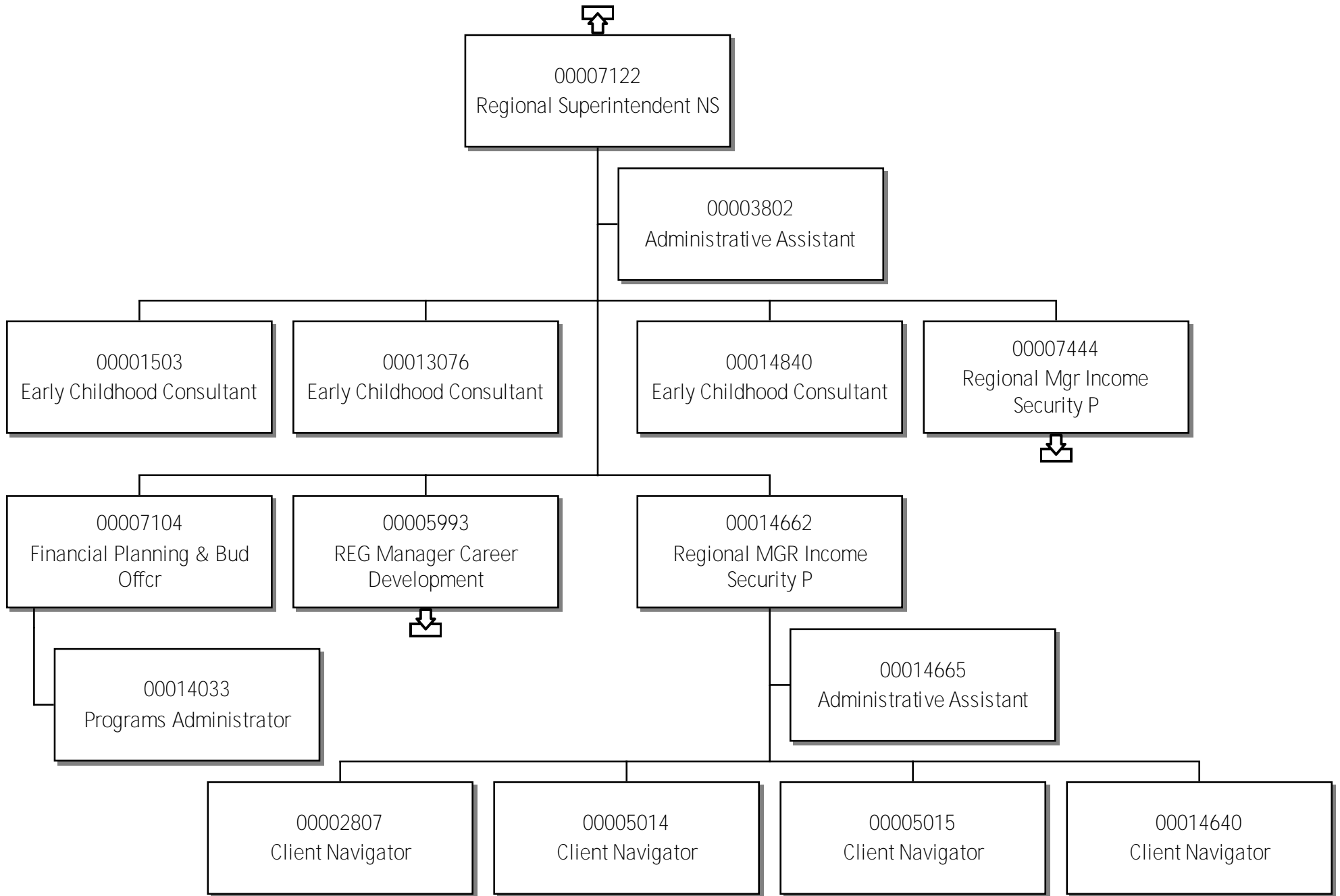
71-Education, Culture & Employment Director, Labour Dev and Stand

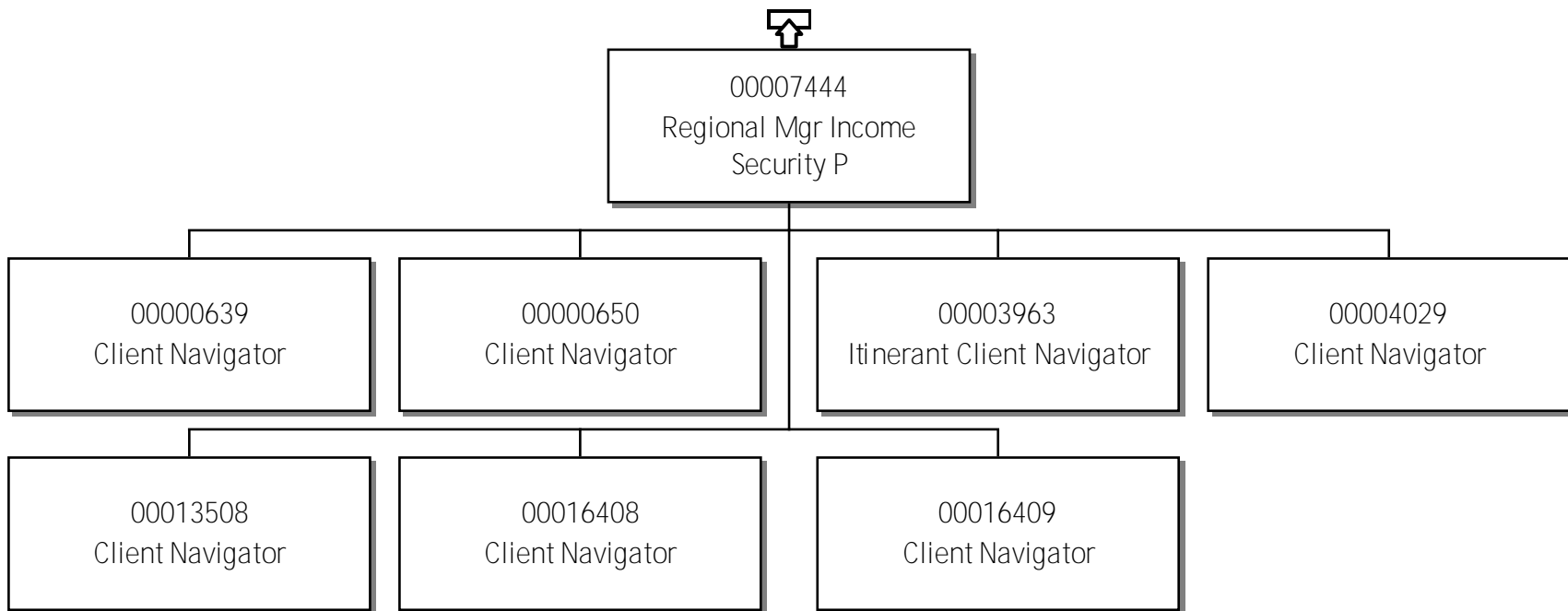


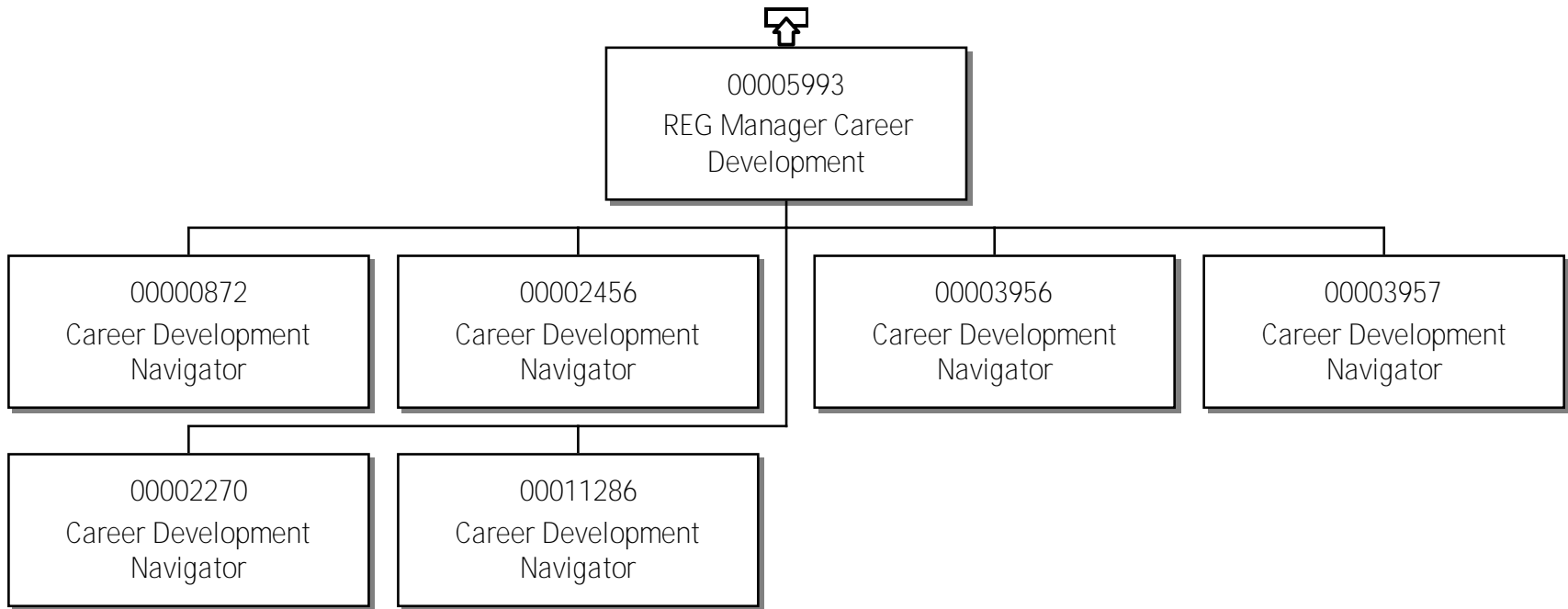




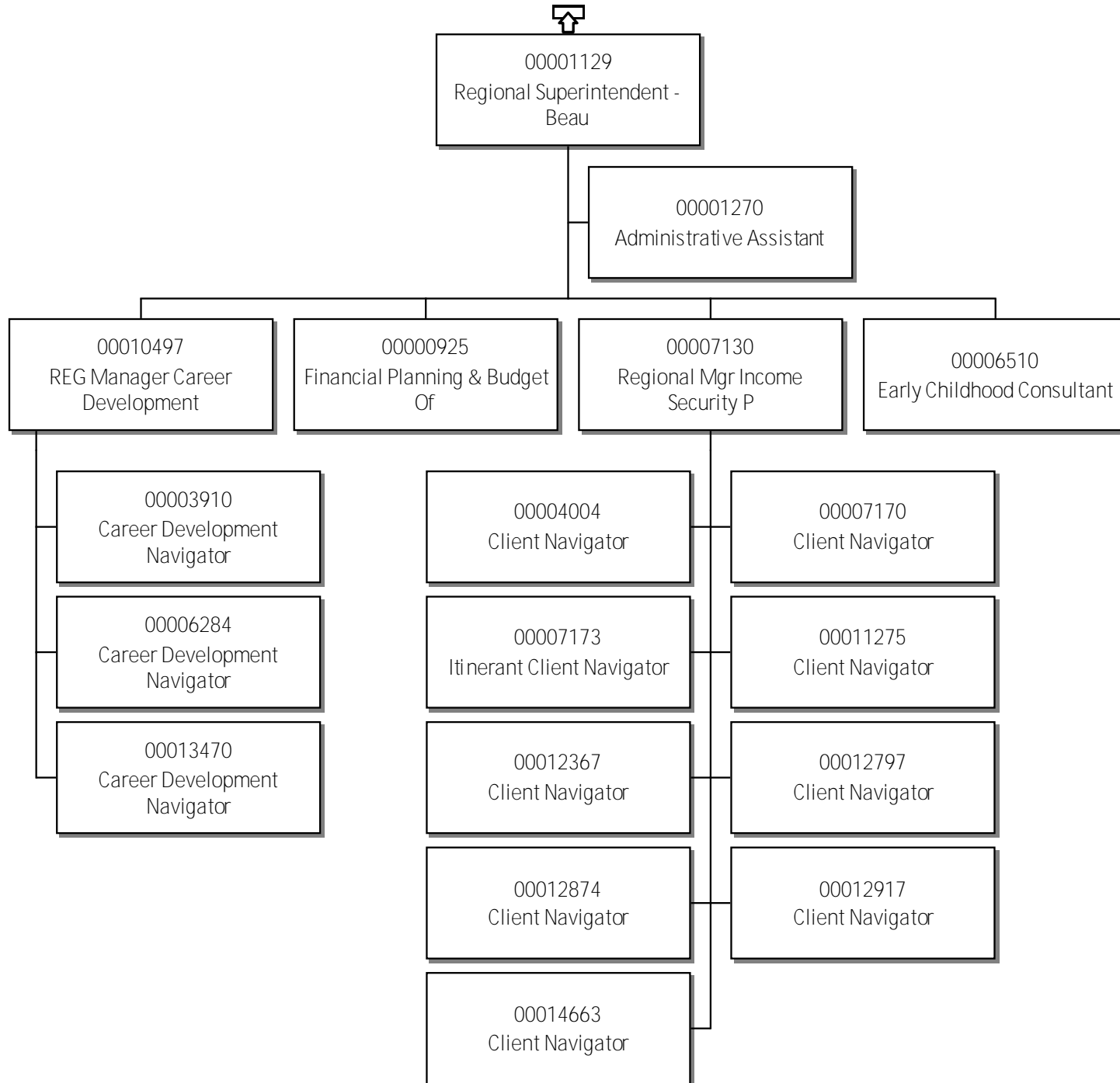


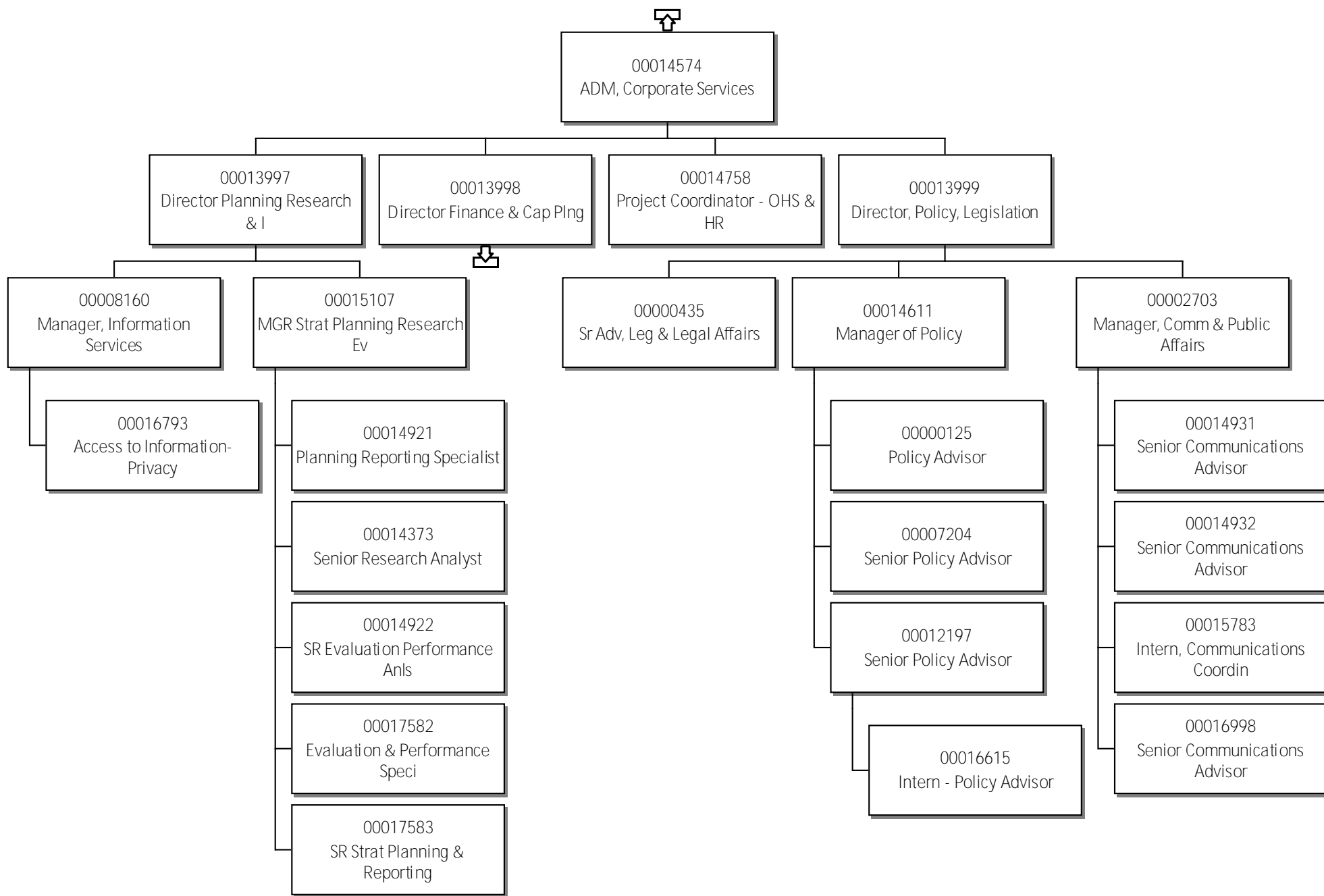


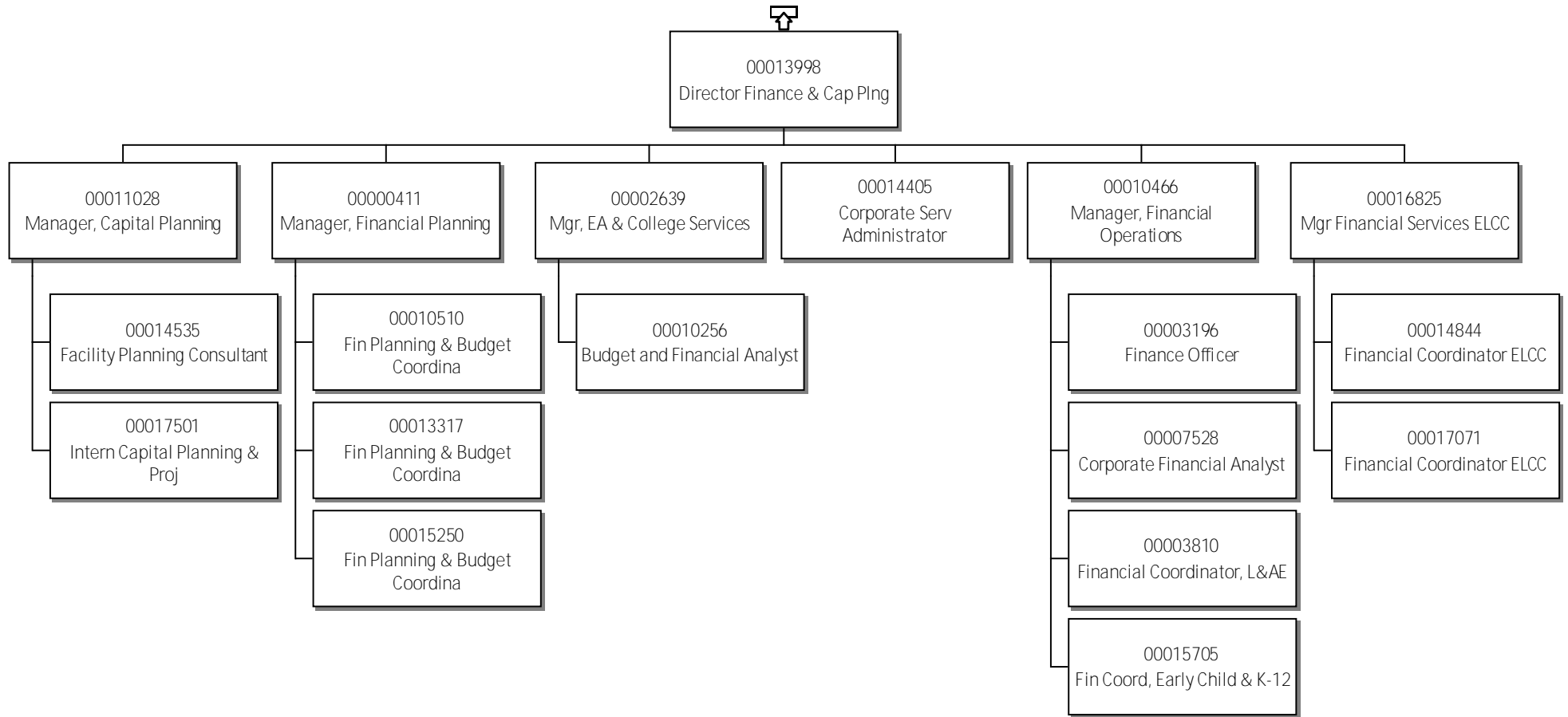


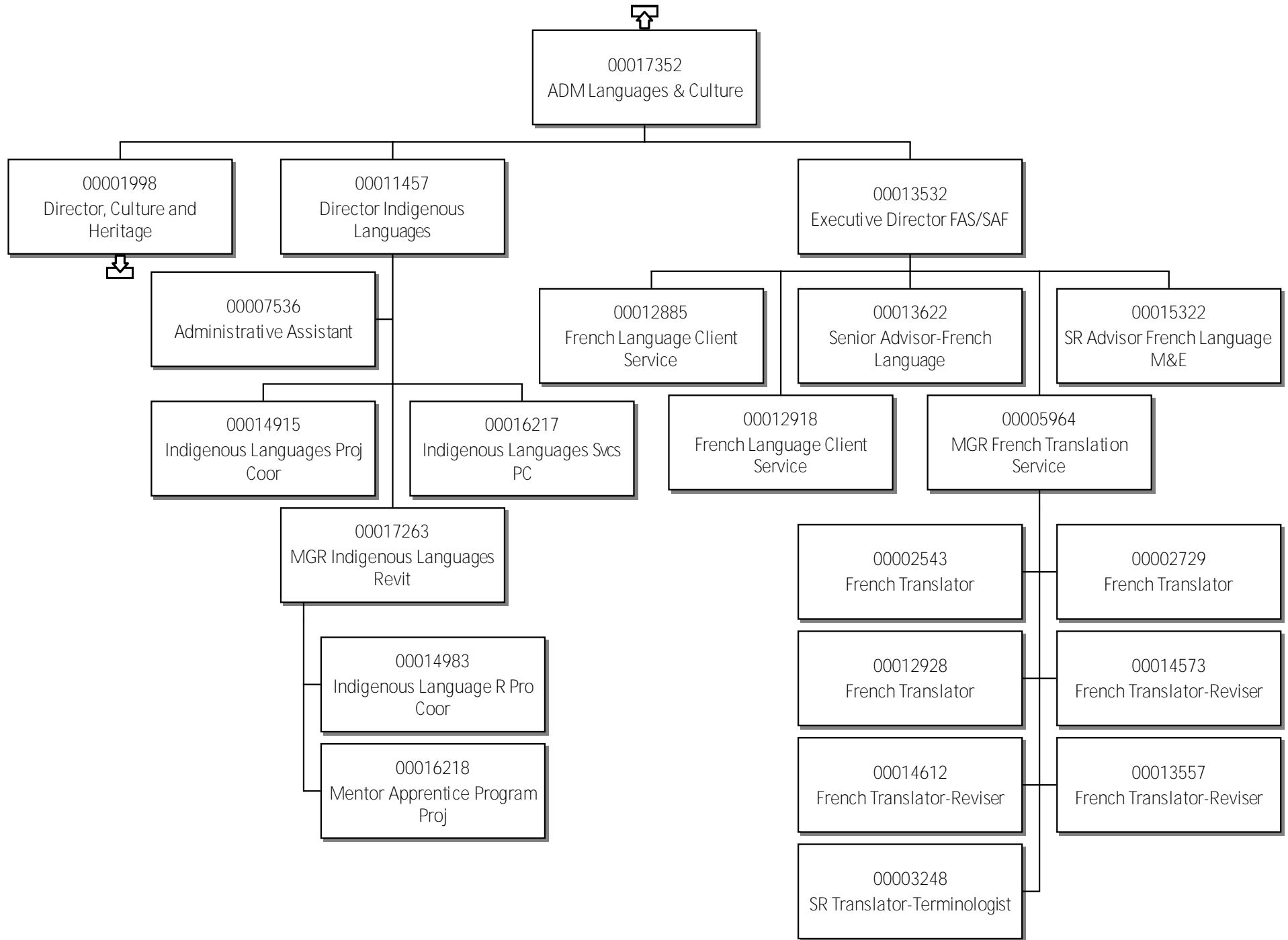


71-Education, Culture & Employment Regional Superintendent - BeauDel









71-Education, Culture & Employment Director, Culture and Heritage

