



# 71 - Education, Culture & Employment

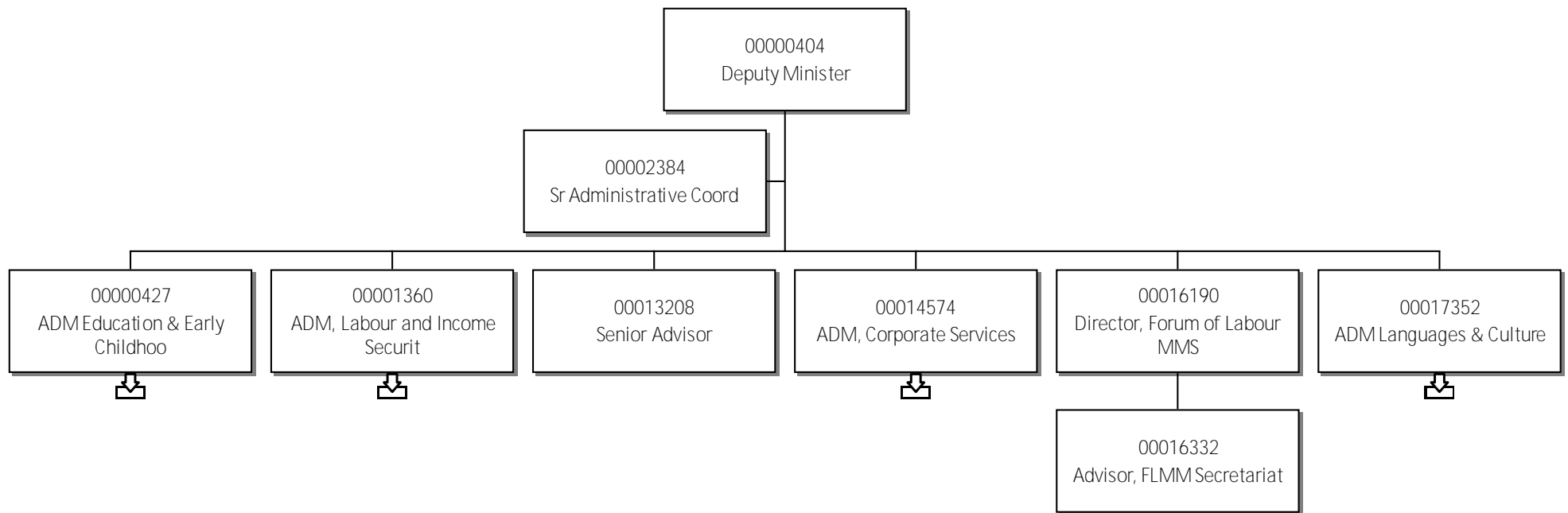
*Organizational Chart*

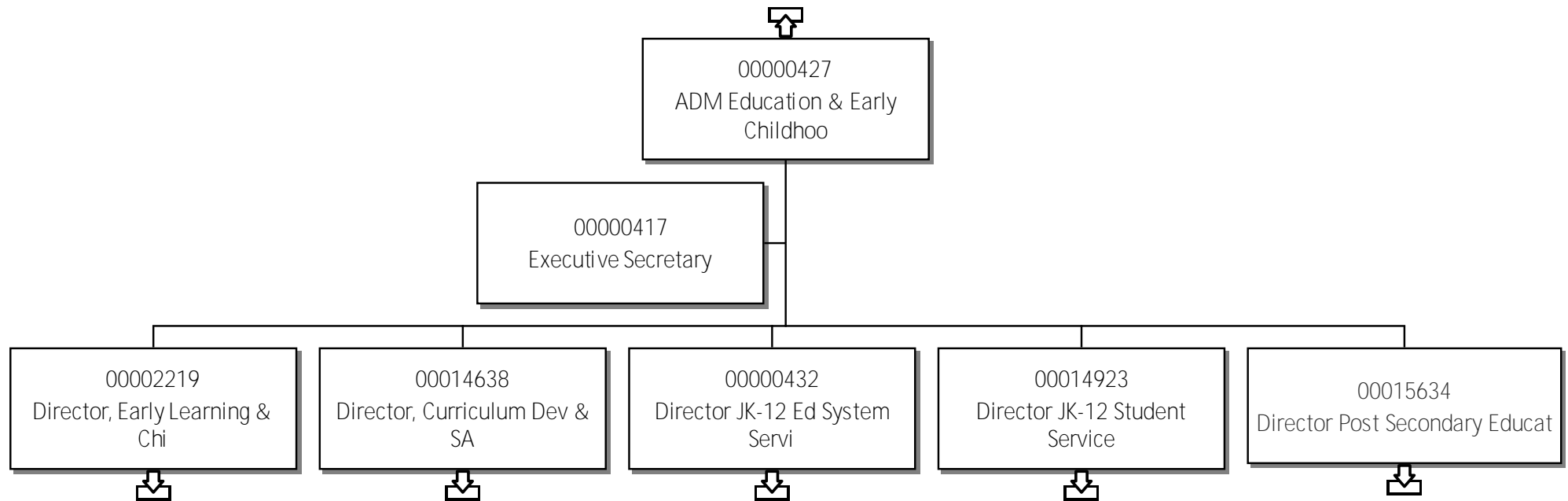
# Contents

|  |    |
|--|----|
| 71-ECE - Jan. 9, 2026 - Web.....                   | 1  |
| Contents.....                                      | 2  |
| Deputy Minister.....                               | 4  |
| ADM, Education and Early Childhood.....            | 5  |
| Director, Early Learning and Childhood.....        | 6  |
| Director, Curriculum Dev & Student Assessment..... | 7  |
| Director, JK-12 ED System Service.....             | 8  |
| MGR Teacher Certification & PD.....                | 9  |
| Director, JK-12 Student Service.....               | 10 |
| Director Post Secondary Education.....             | 11 |
| Territorial Librarian.....                         | 12 |
| ADM, Labour and Income Securit.....                | 13 |
| Director, Income Security Prog.....                | 14 |
| Director, Labour Dev and Stand.....                | 15 |
| Regional Superintendent - SS.....                  | 16 |
| Regional Superintendent, Sahtu.....                | 17 |
| Regional Superintendent, Dehcho.....               | 18 |
| Regional Superintendent NS.....                    | 19 |
| Regional Mgr Income Security Programs.....         | 20 |
| Regional Manager, Career Dev.....                  | 21 |
| Regional MGR Income Security Programs.....         | 22 |
| Regional Superintendent - BeauDel.....             | 23 |
| ADM, Corporate Services.....                       | 24 |

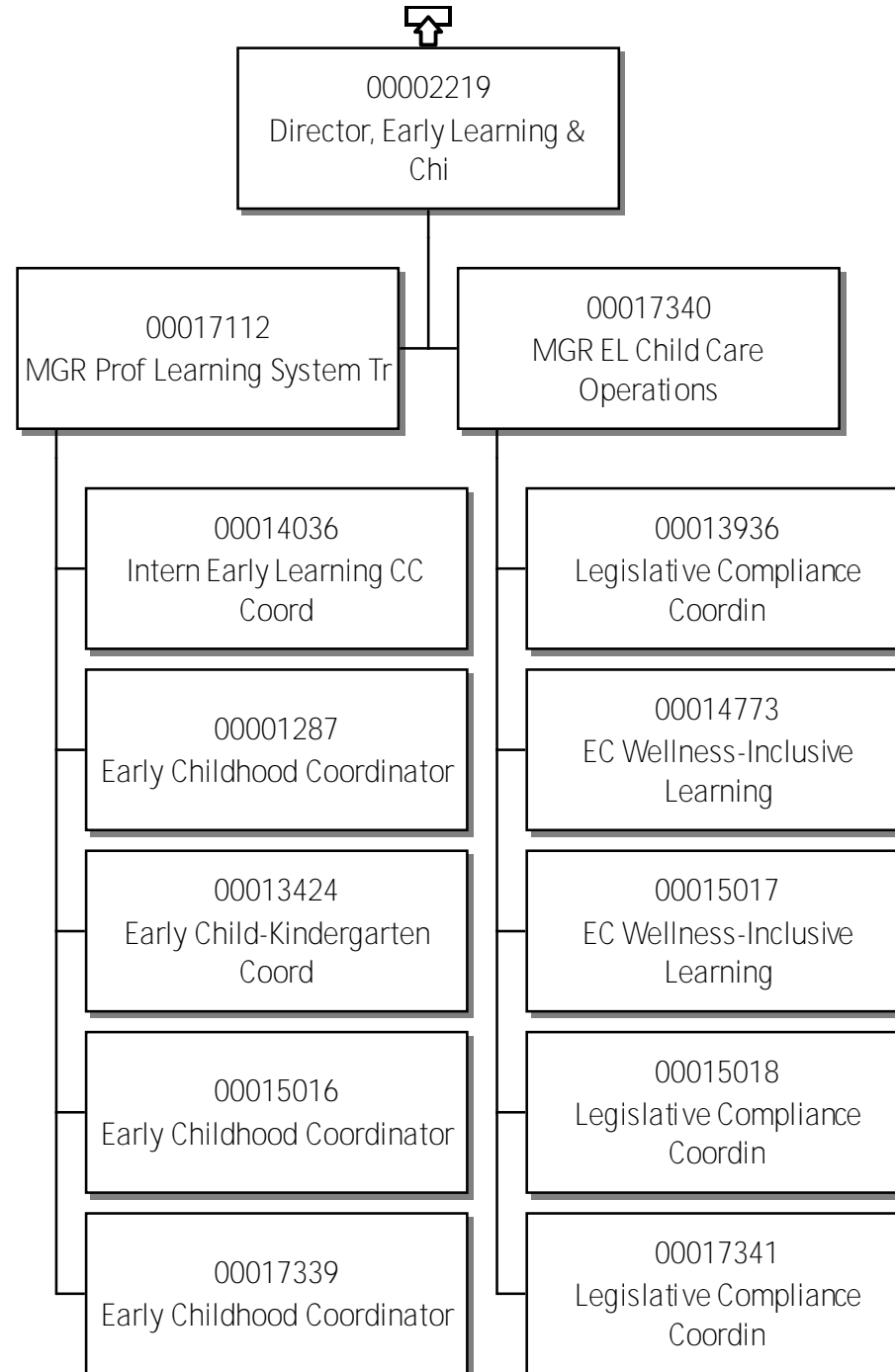
# Contents Continued

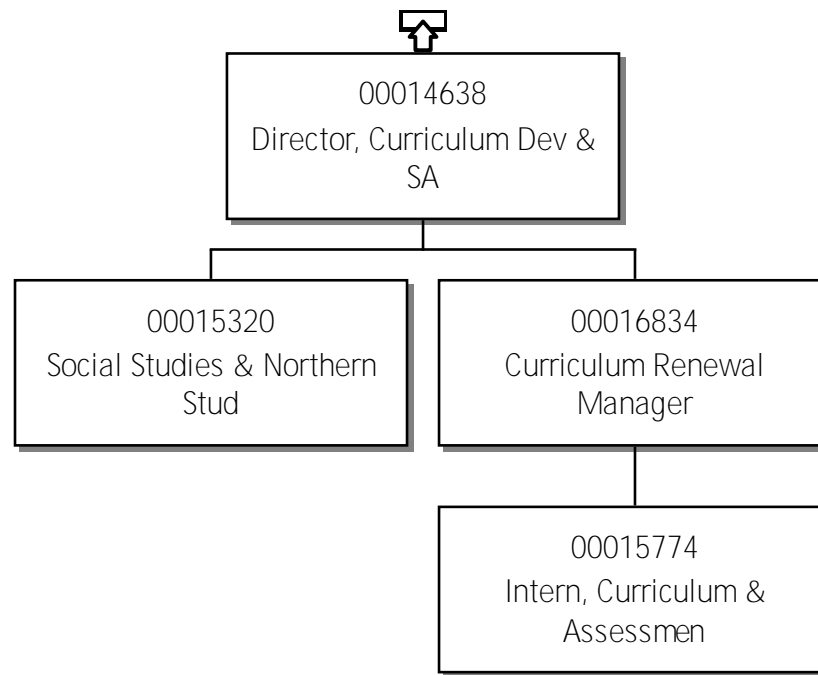
|                                     |    |
|-------------------------------------|----|
| Director, Plng, Resear & Eval.....  | 25 |
| Director Finance & Cap Plng.....    | 26 |
| Director, Policy, Legislation.....  | 27 |
| ADM Languages & Culture.....        | 28 |
| Director, Culture and Heritage..... | 29 |
| Asst. Dir., Culture & Heritage..... | 30 |
| Territorial Archaeologist.....      | 31 |
| Territorial Archivist.....          | 32 |
| Director, Indigenous Languages..... | 33 |
| Executive Director, FAS/SAF.....    | 34 |

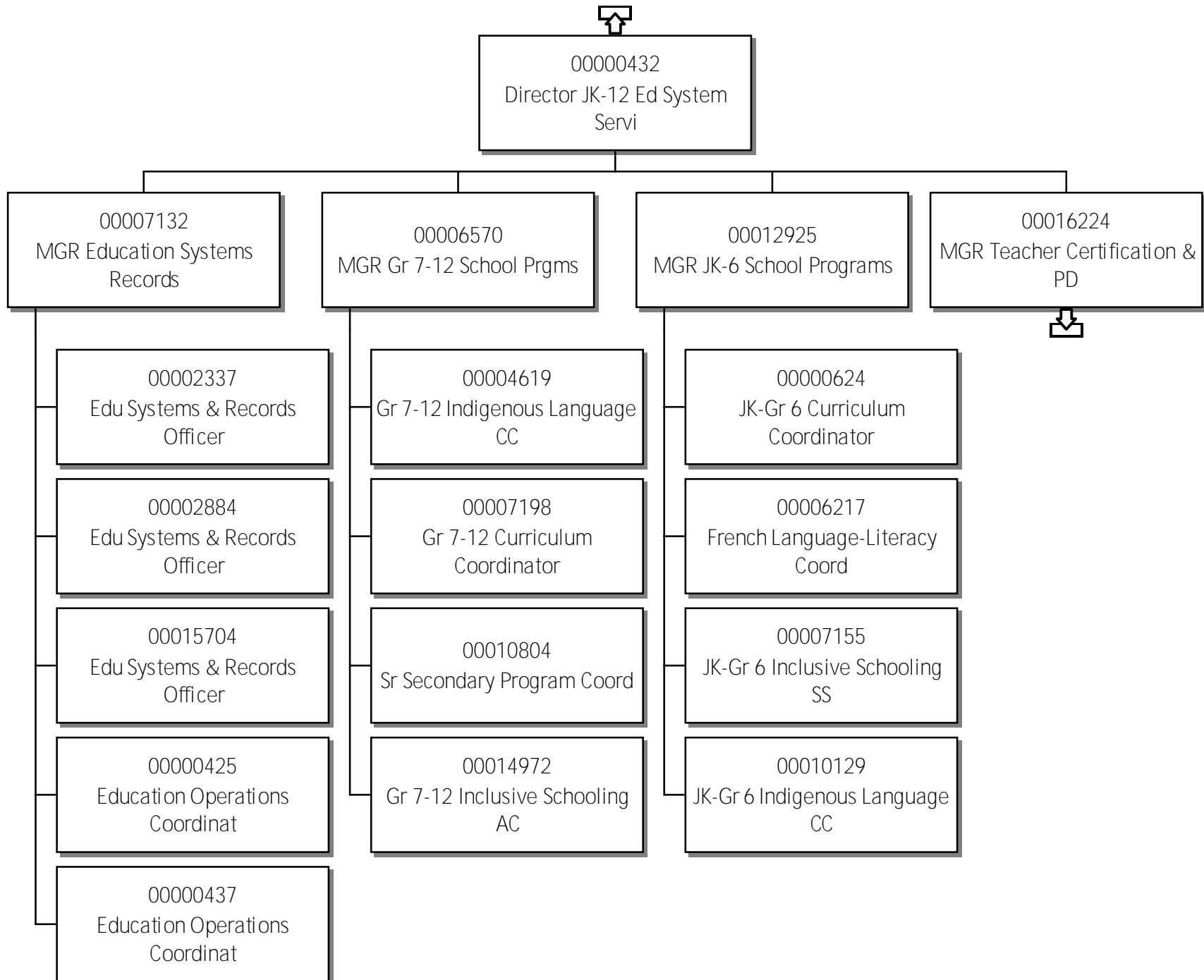


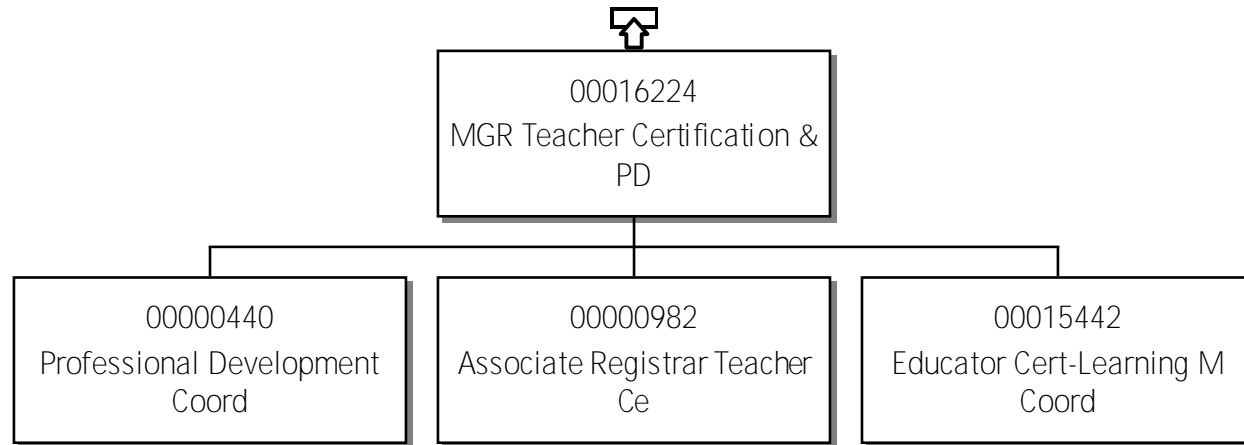


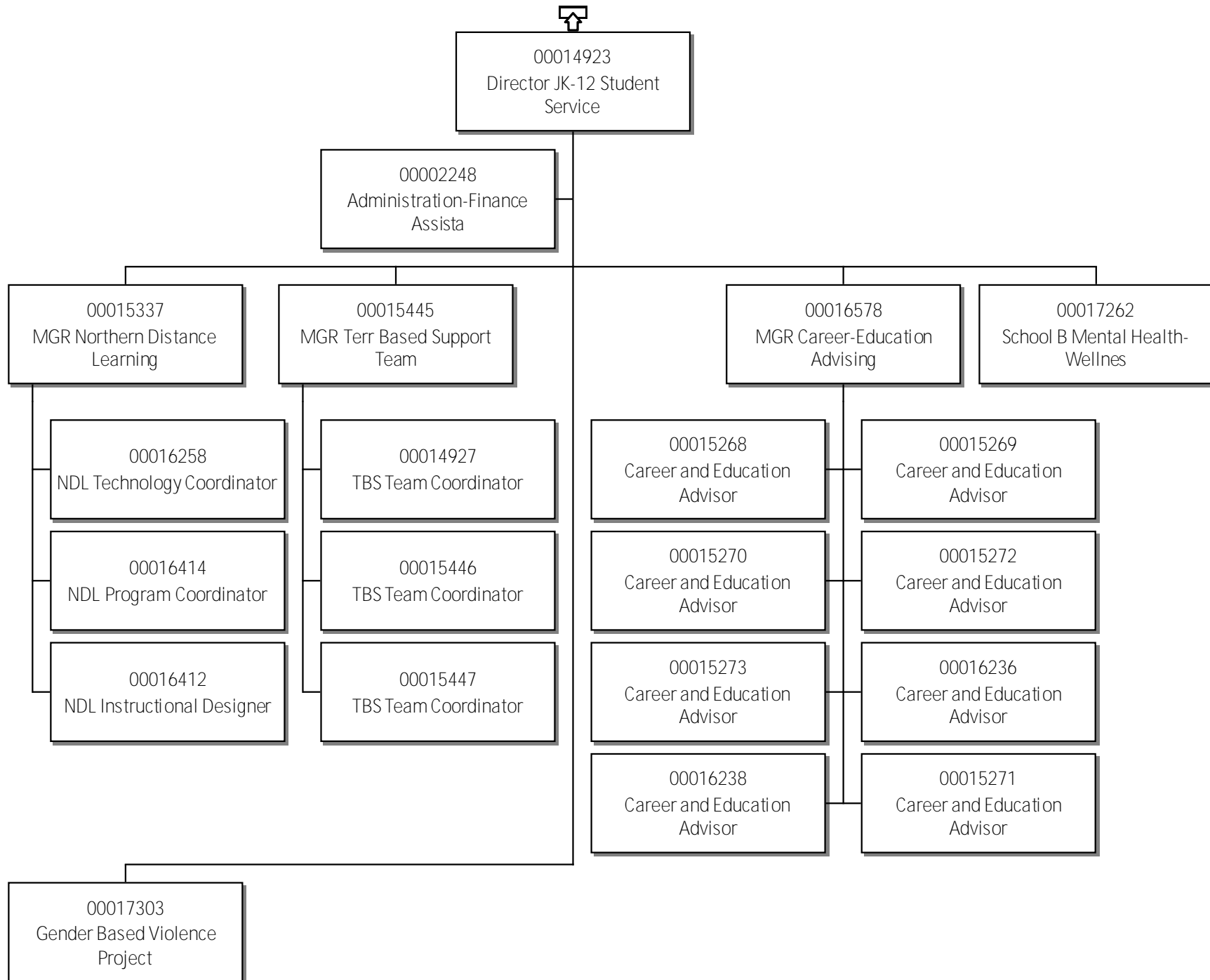
71-Education, Culture & Employment  
Director, Early Learning and Childhood

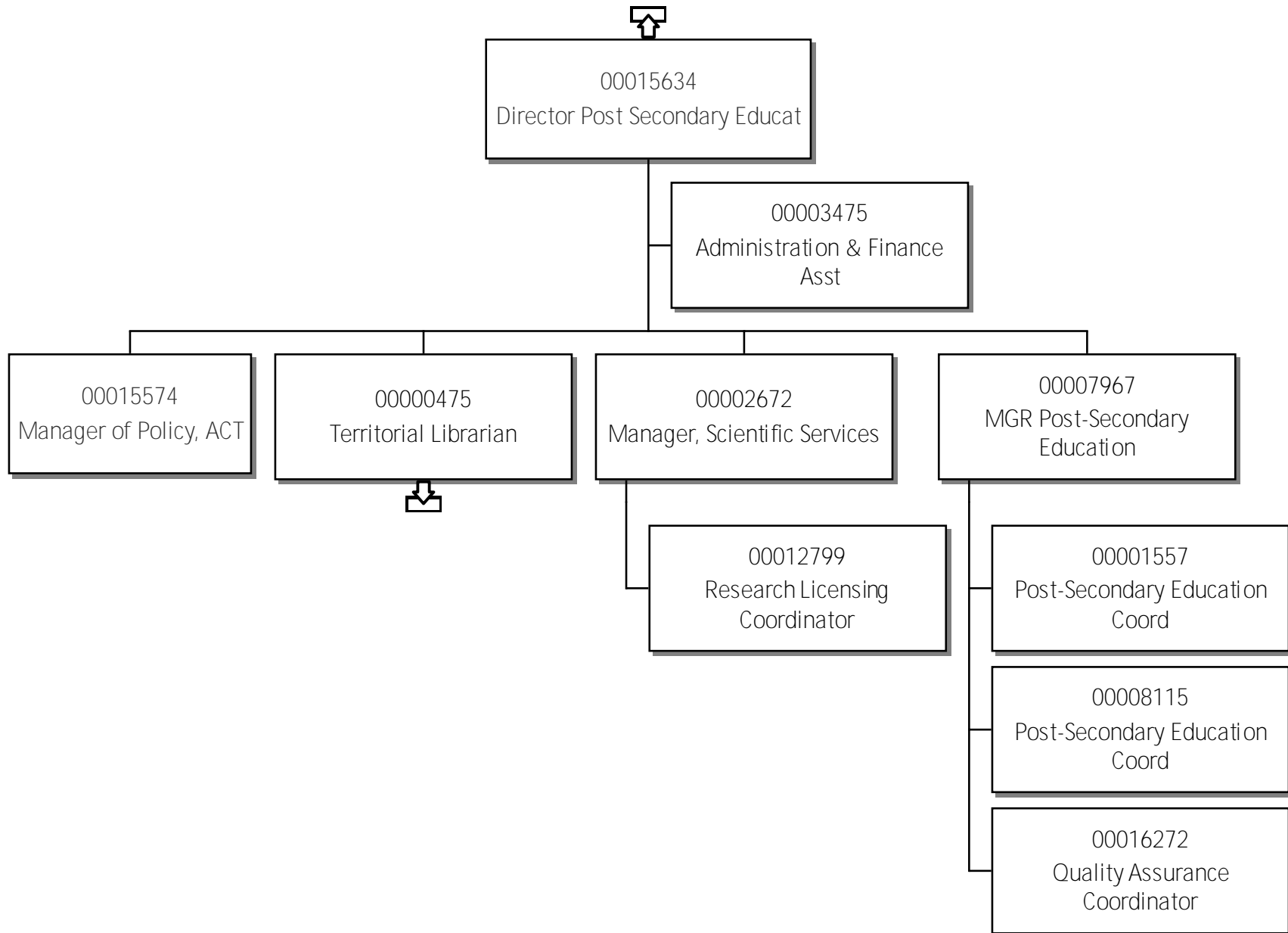


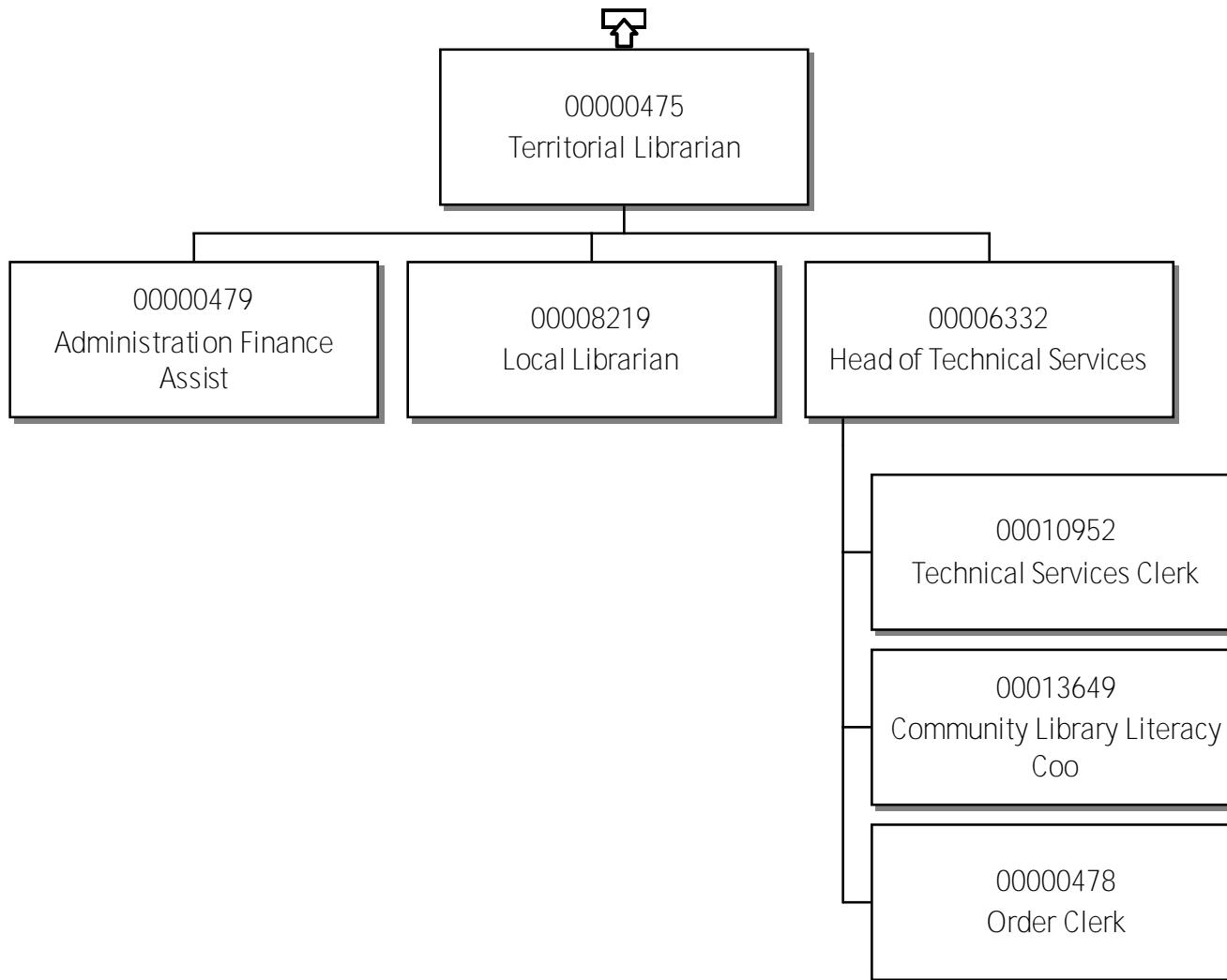


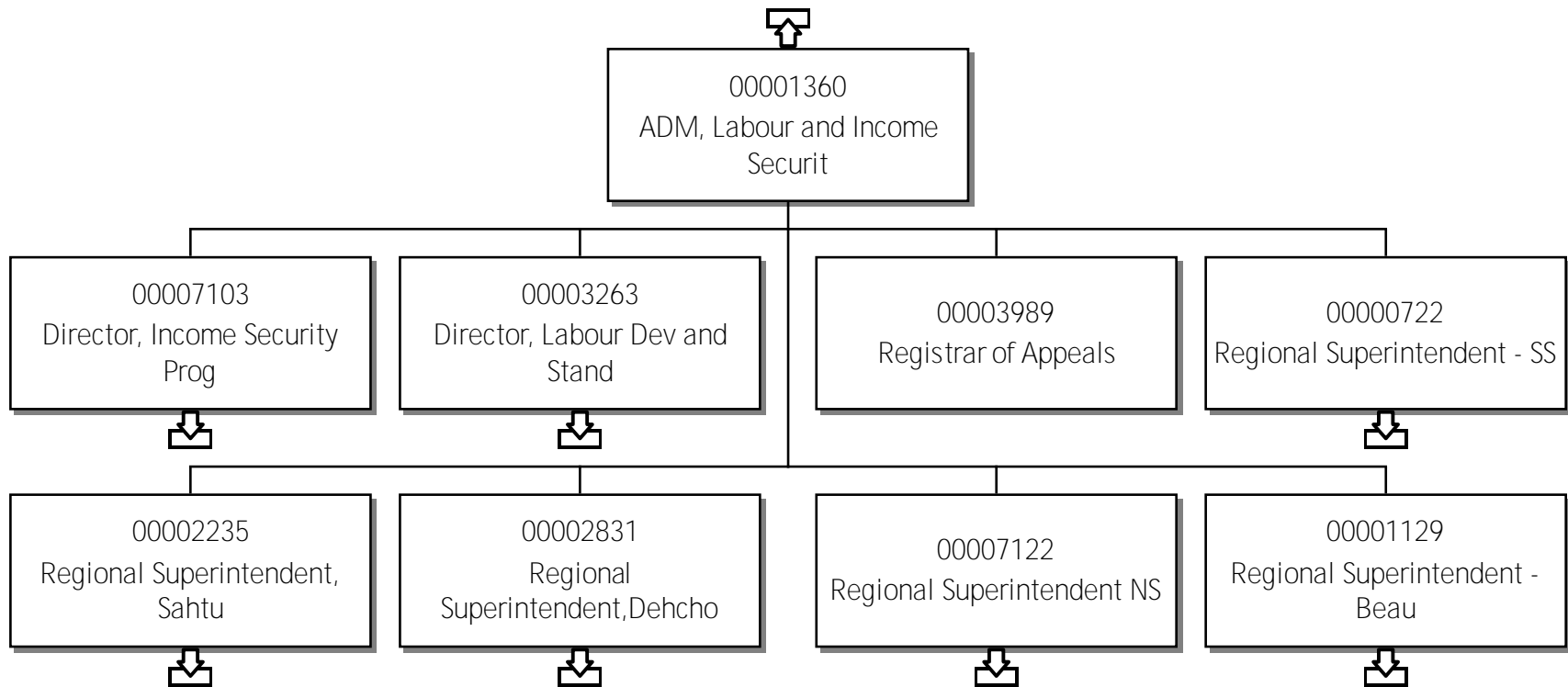


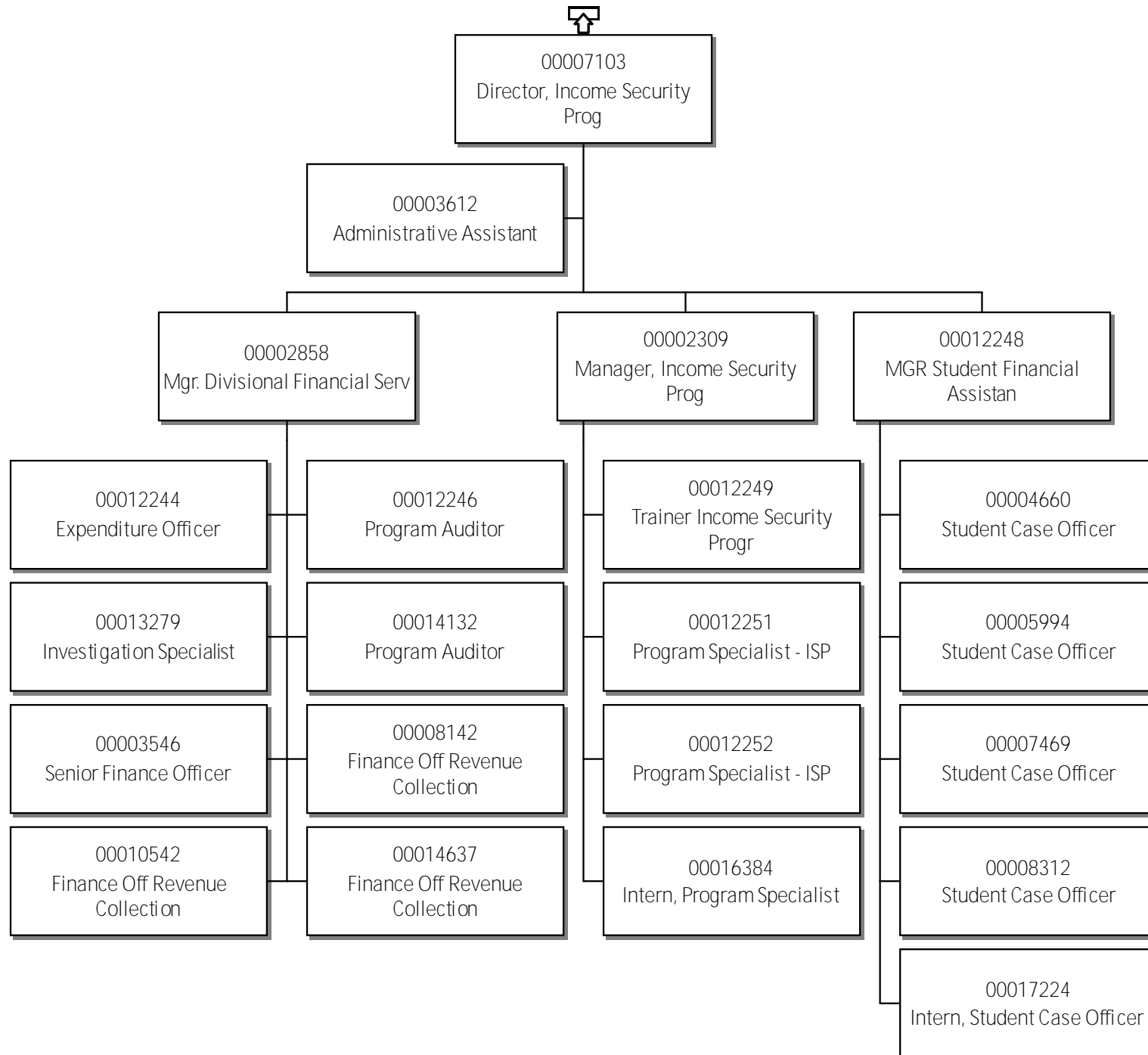












71-Education, Culture & Employment  
Director, Labour Dev and Stand