



# 71 - Education, Culture and Employment

*Organizational Charts*

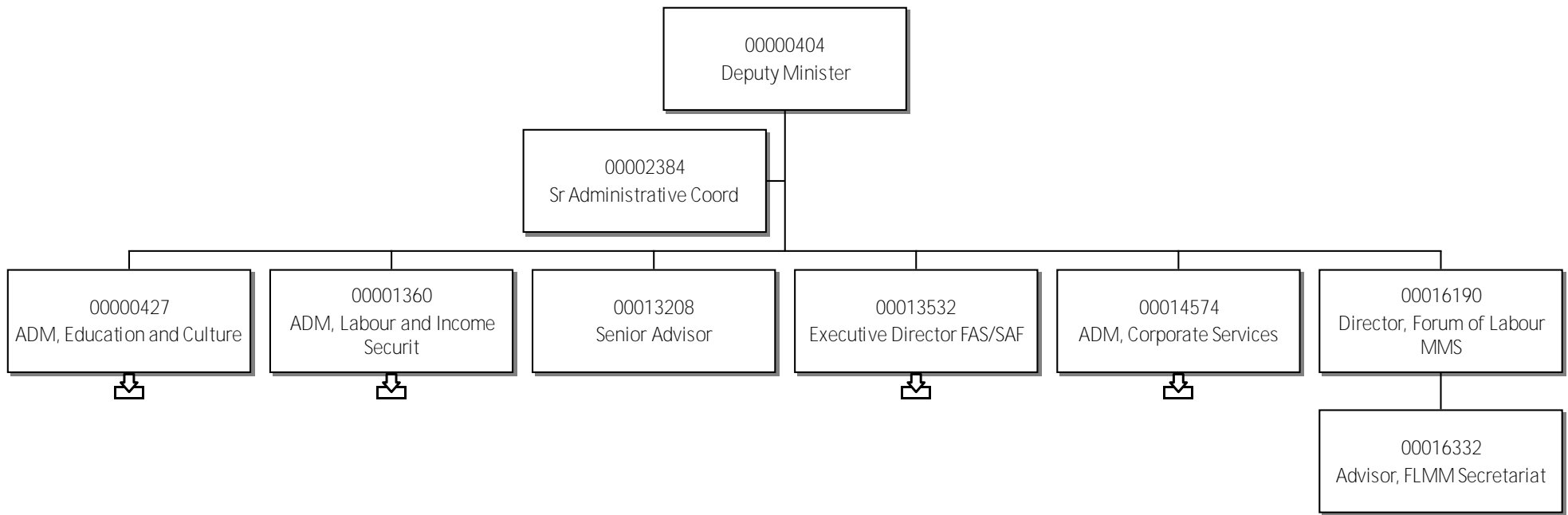
# Contents

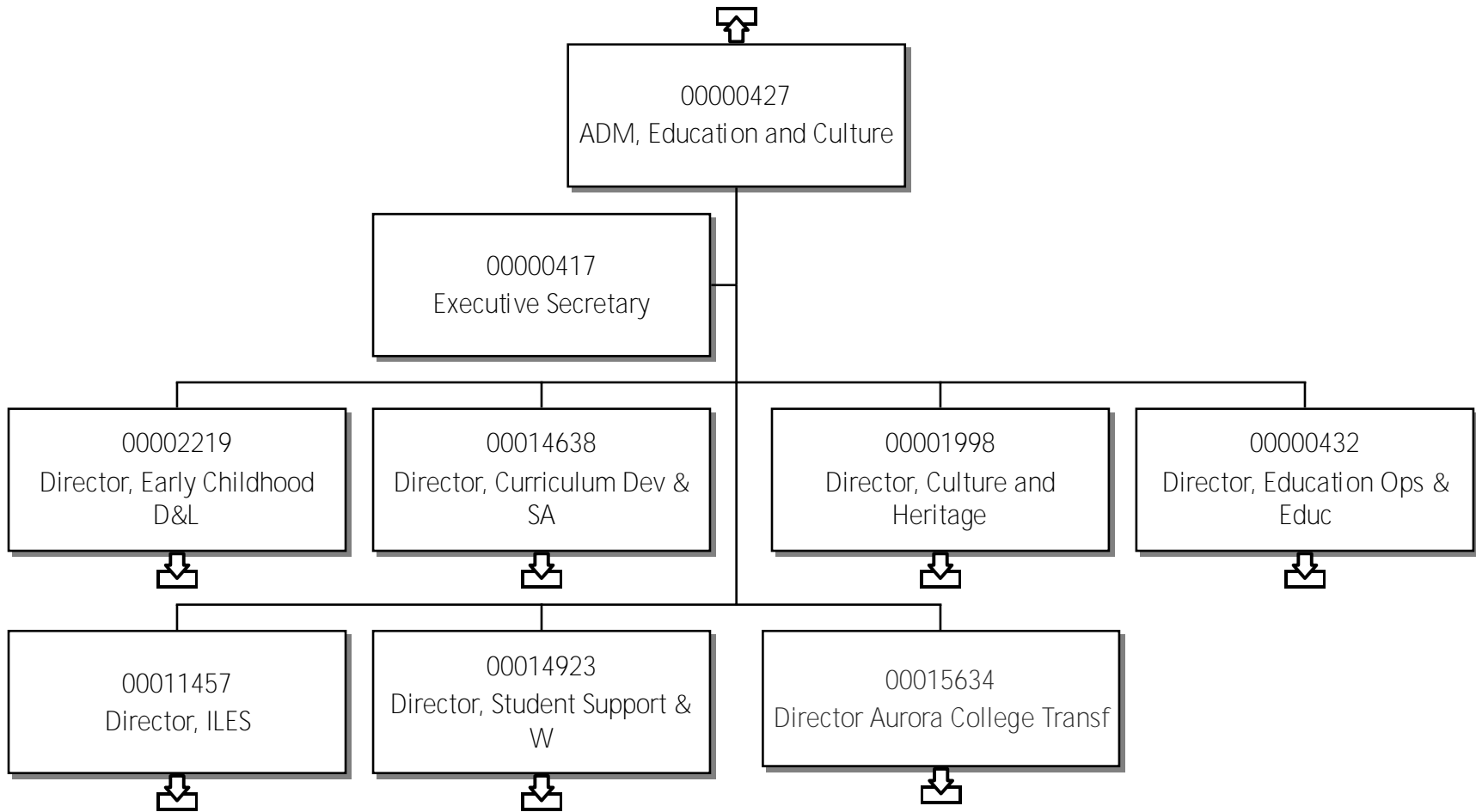
71 - Education, Culture and Employment.....	1
Contents.....	2
Deputy Minister.....	4
ADM, Education and Culture.....	5
Director, Early Childhood D&L.....	6
Director, Curriculum Dev & Student Assessment.....	7
Director, Culture and Heritage.....	8
Asst. Dir., Culture & Heritage.....	9
Director, Ed Operations & Dev.....	10
Territorial Librarian.....	11
Director, ILES.....	12
Director, Student Support & W.....	13
Assistant Director, SSW.....	14
Director Aurora College Transf.....	15
ADM, Labour and Income Securit.....	16
Director, Income Security Prog.....	17
Director, Labour Dev and Stand.....	18
Regional Superintendent - SS.....	19
Regional Superintendent.....	20
Regional Superintendent.....	21
Regional Superintendent NS.....	22
Regional Superintendent - Beau.....	23
Executive Director.....	24

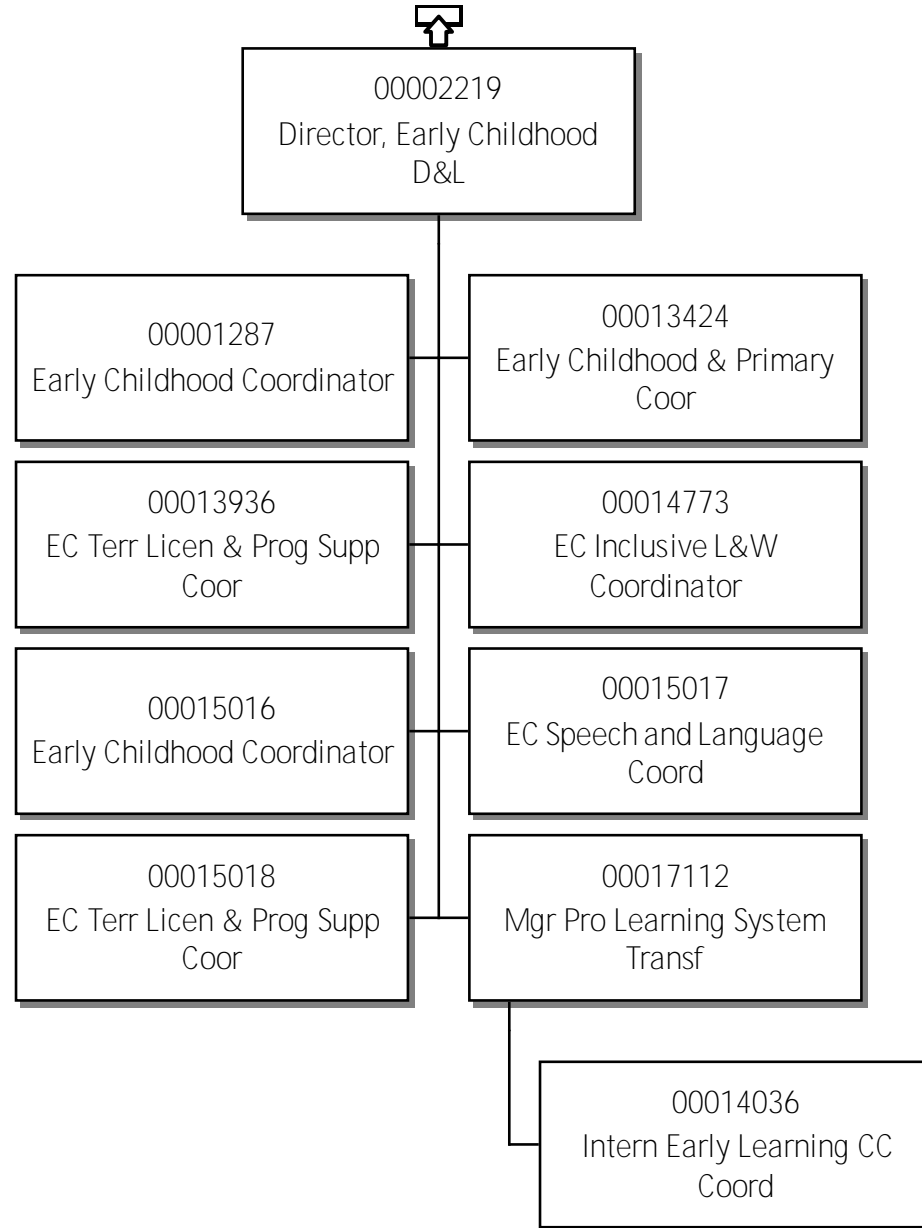
# Contents Continued

ADM, Corporate Services.....	25
Director, PIng, Resear & Eval.....	26
Director Finance & Cap PIng.....	27
Director, Policy, Leg & Comm.....	28

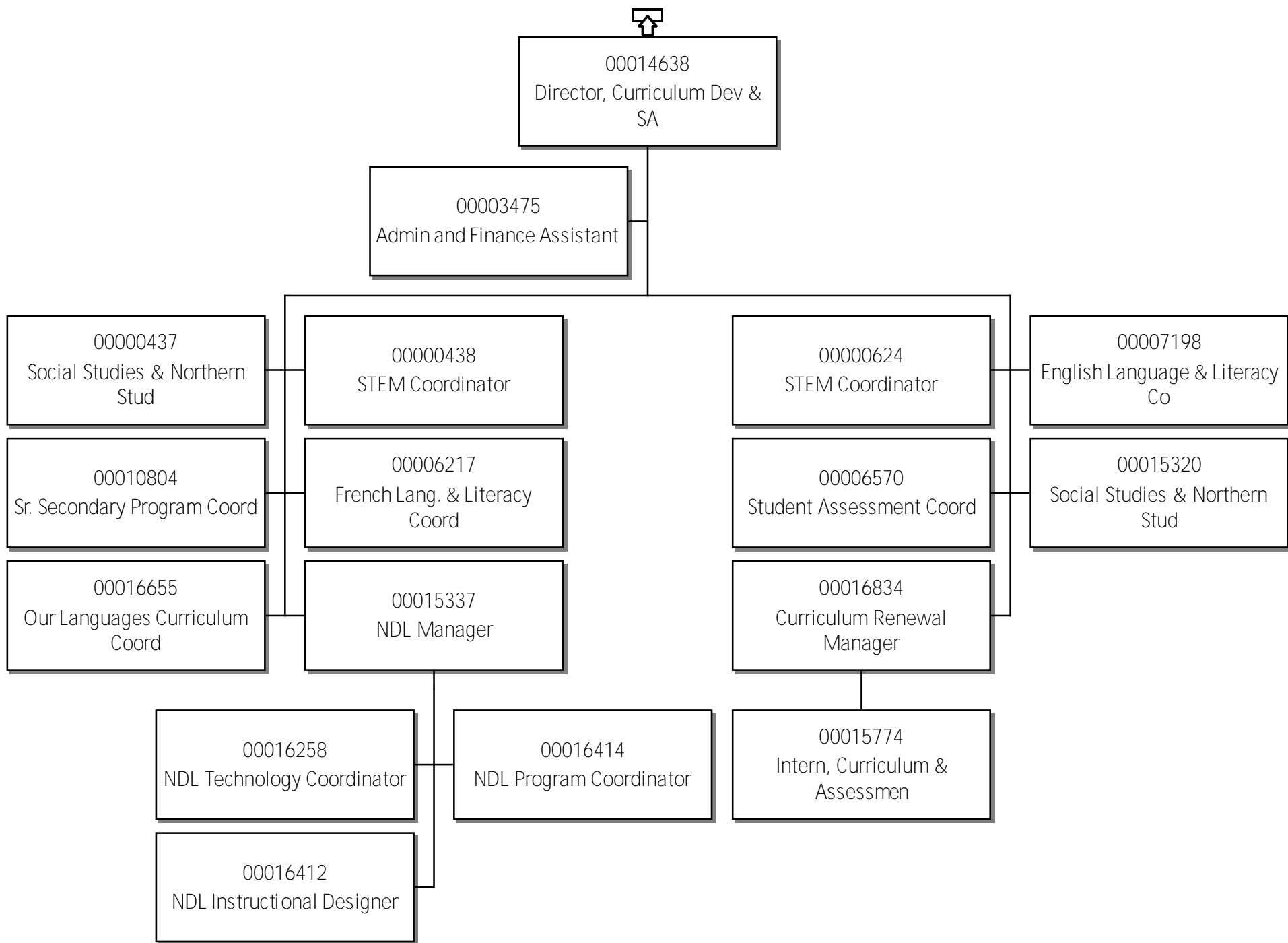
# 71-Education, Culture & Employment Deputy Minister



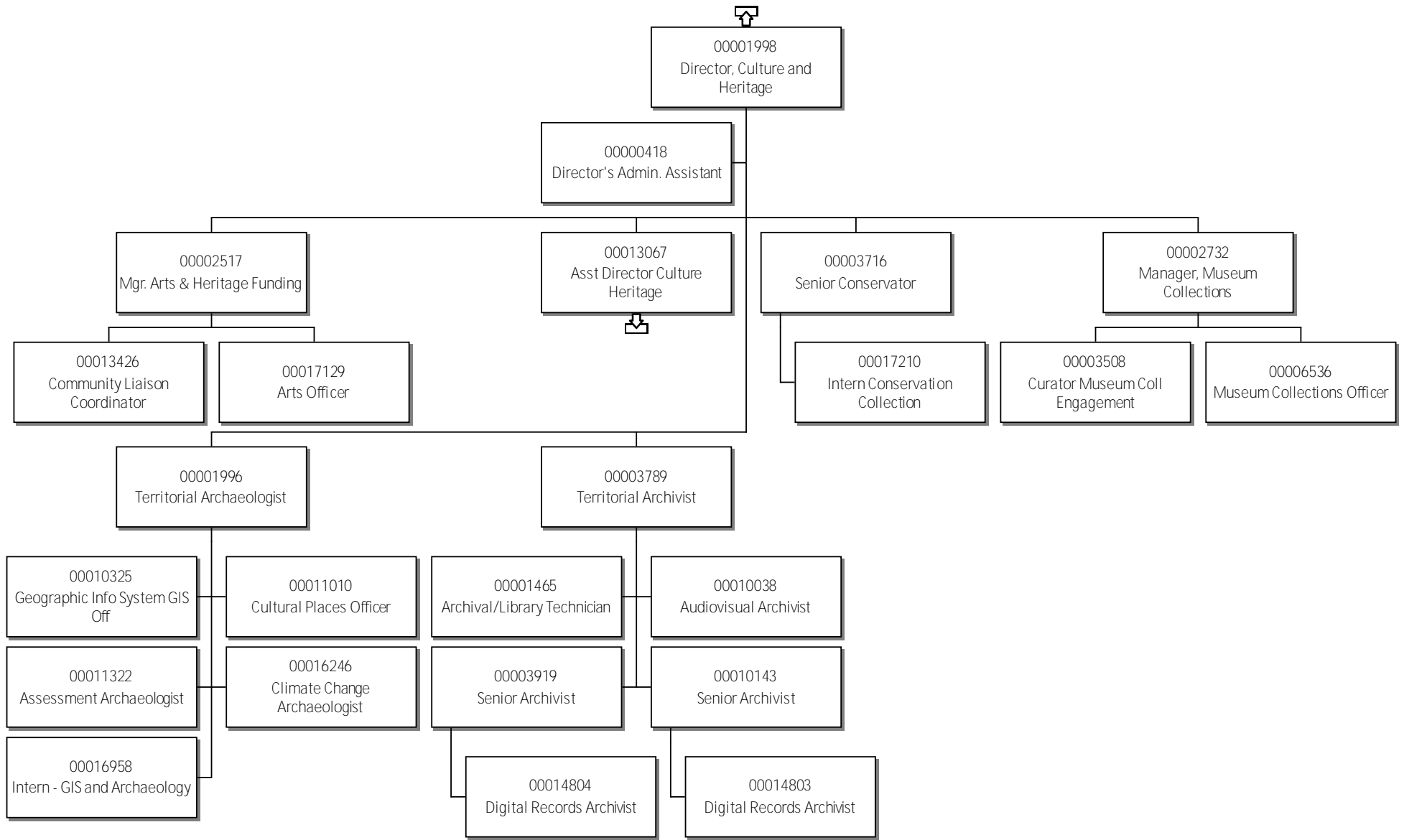




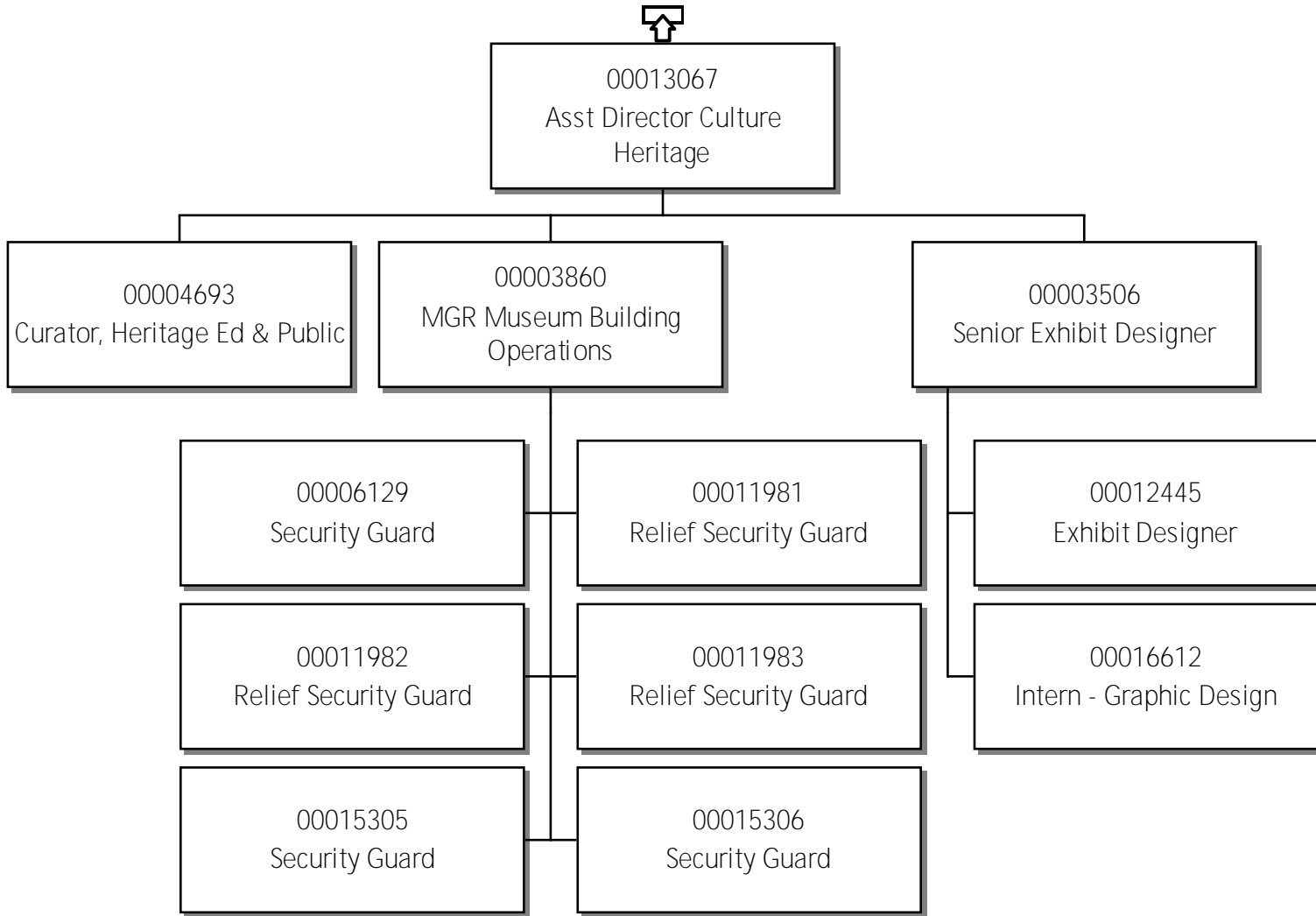
71-Education, Culture & Employment  
Director, Curriculum Dev & Student Assessment



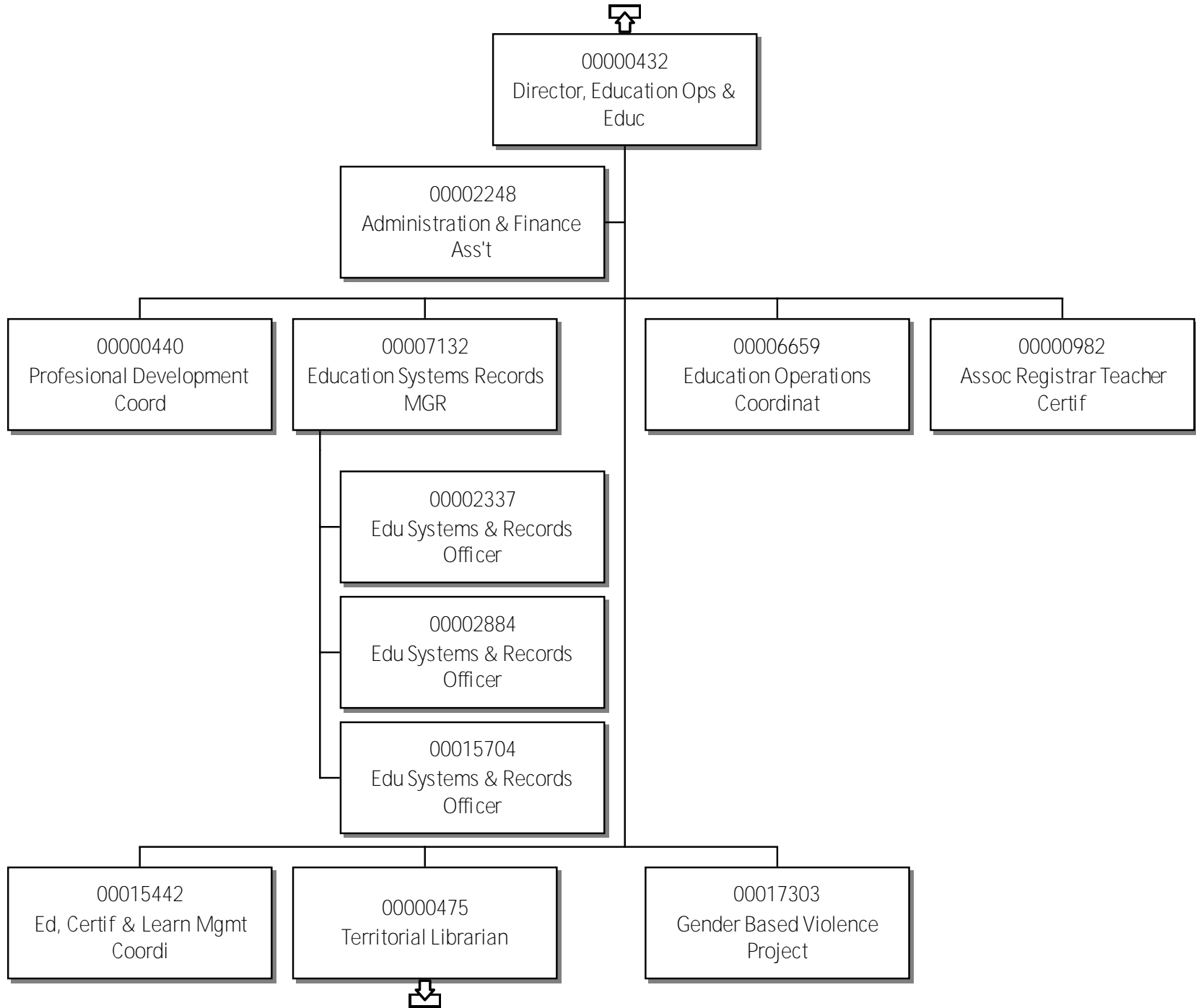
# 71-Education, Culture & Employment Director, Culture and Heritage

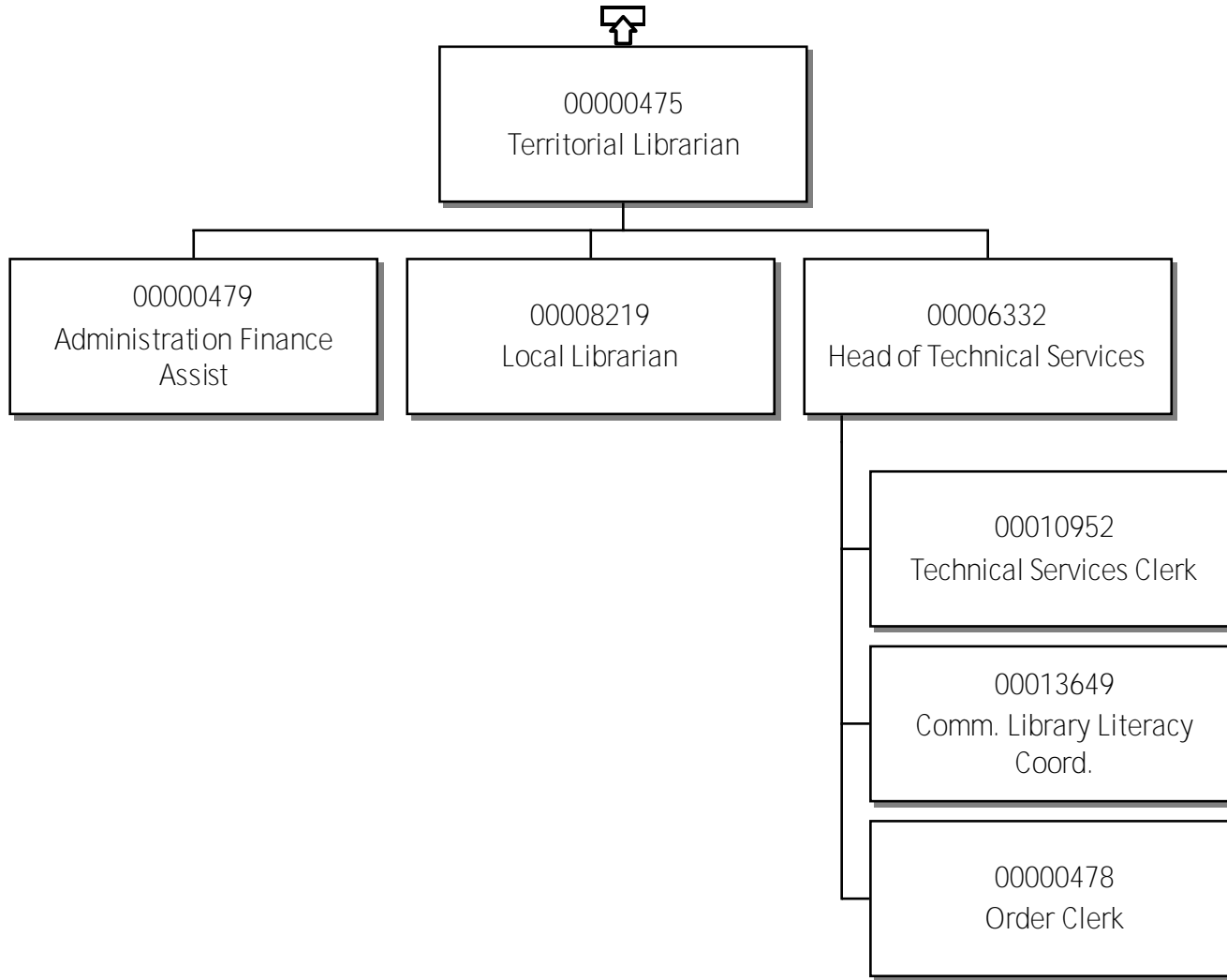


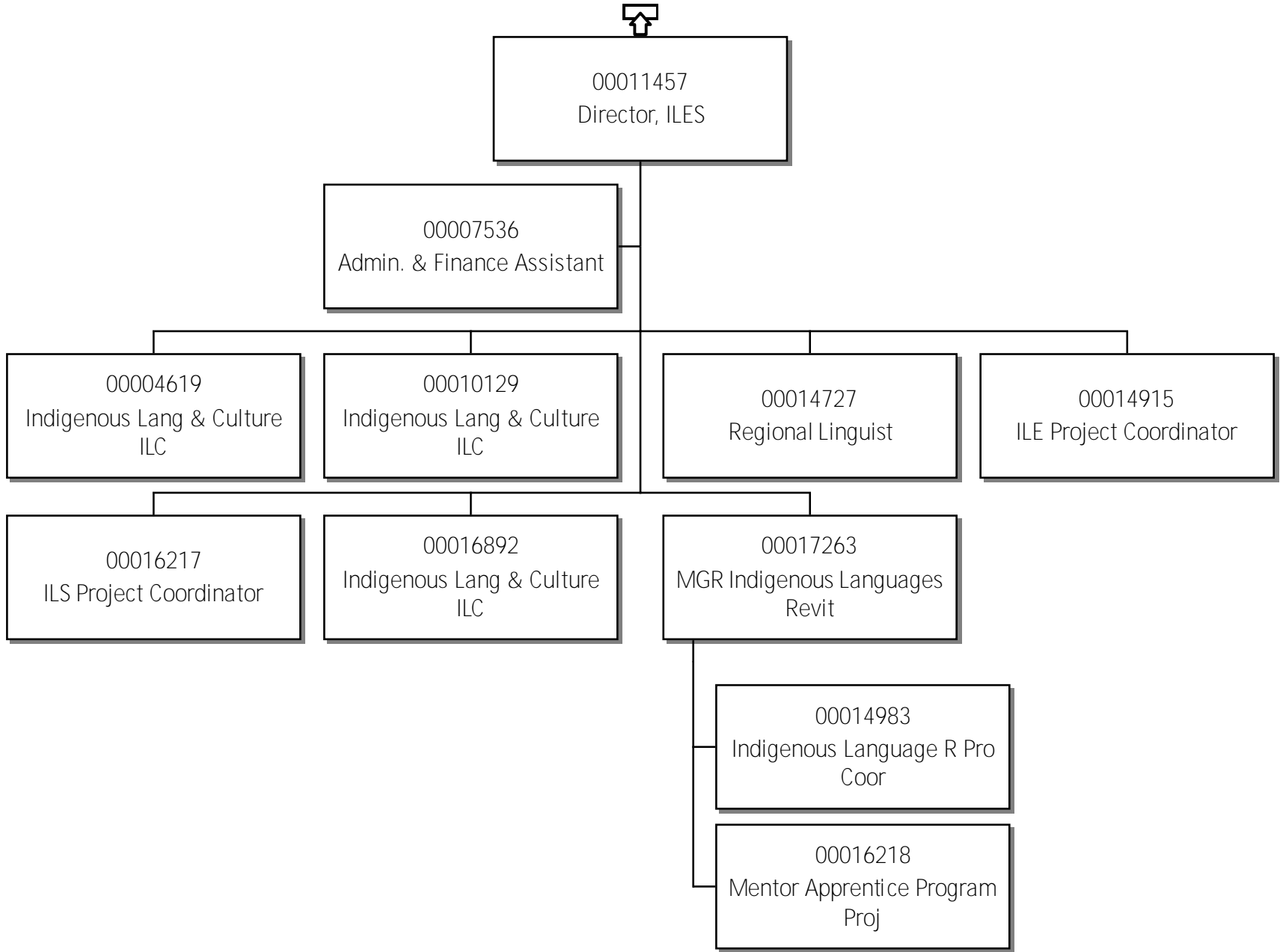


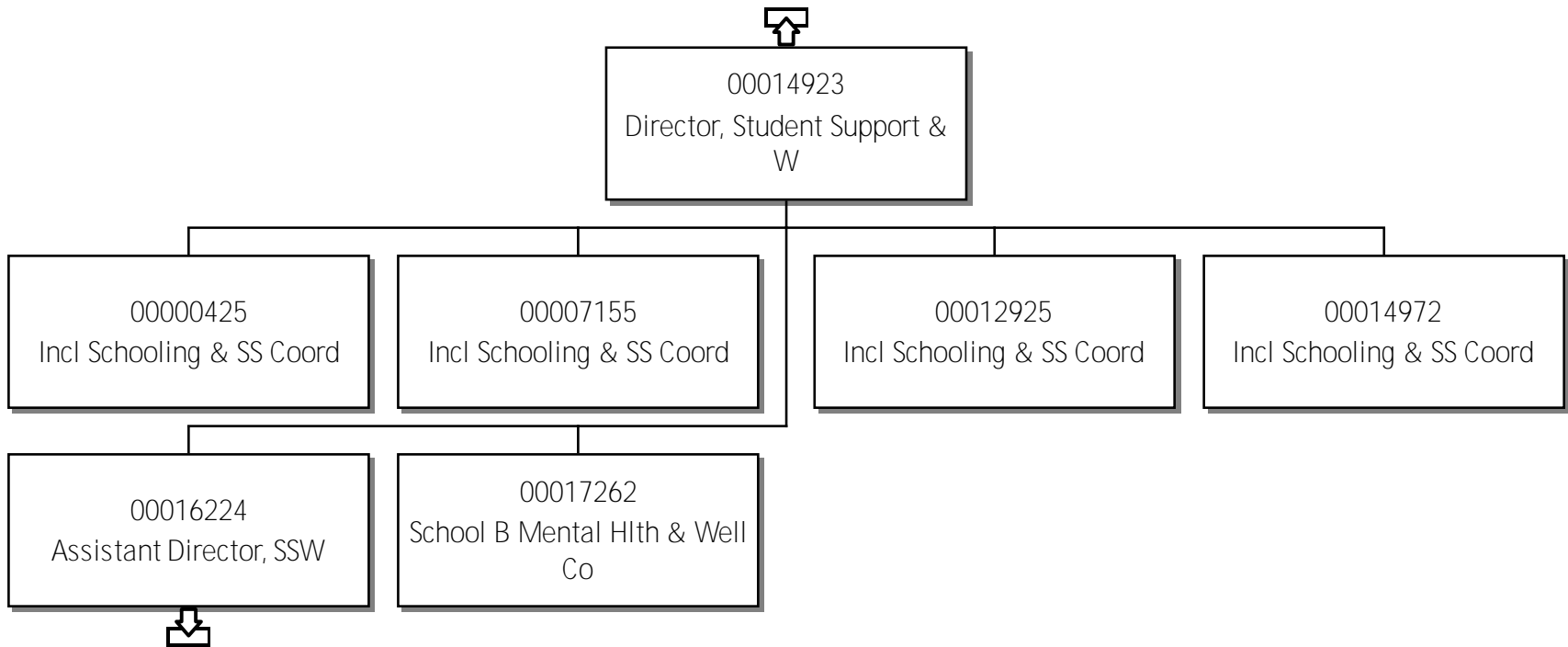


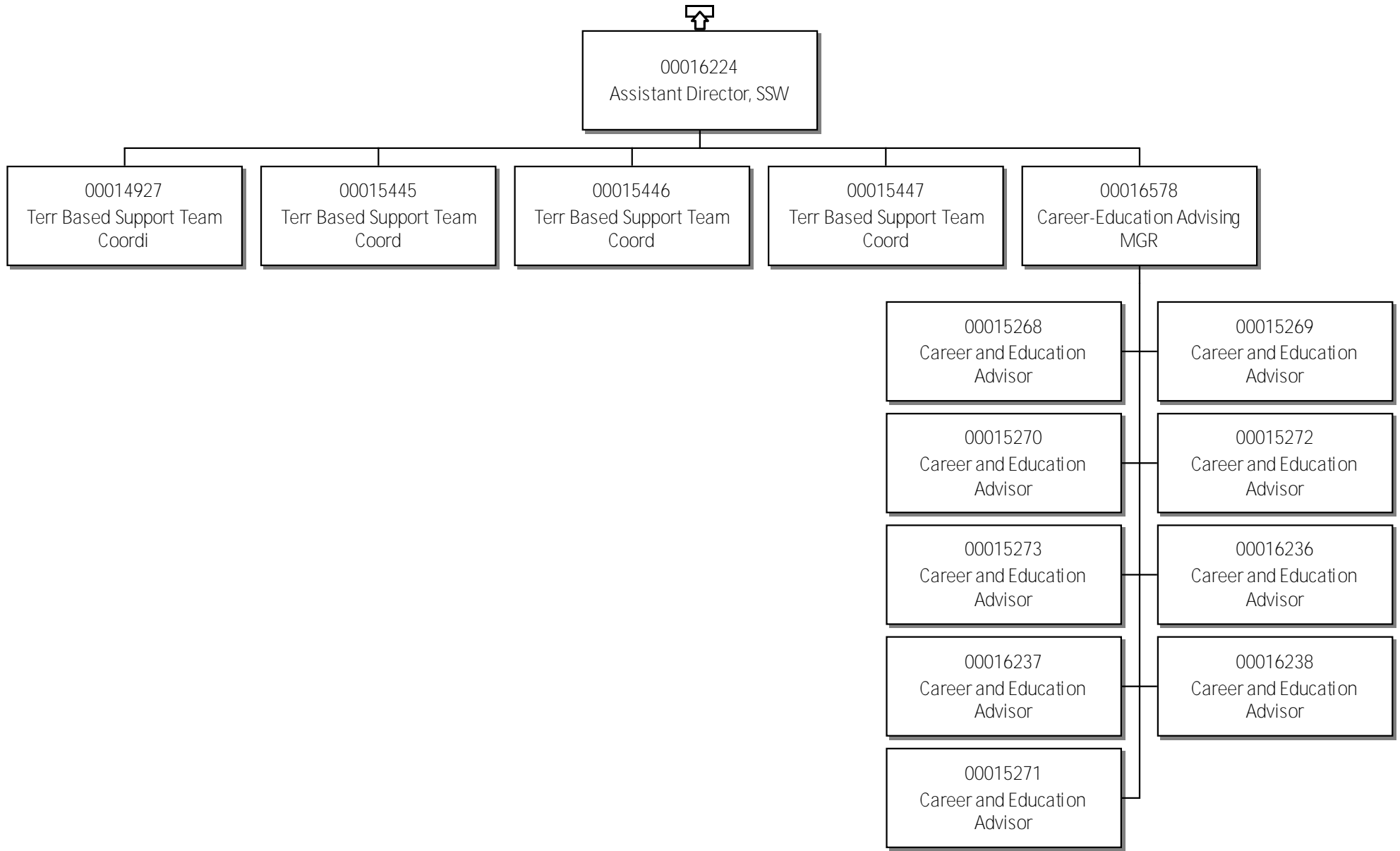
71-Education, Culture & Employment  
Director, Ed Operations & Dev

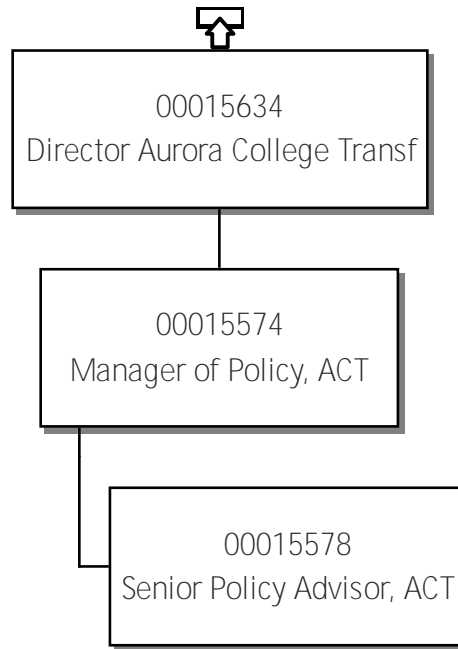


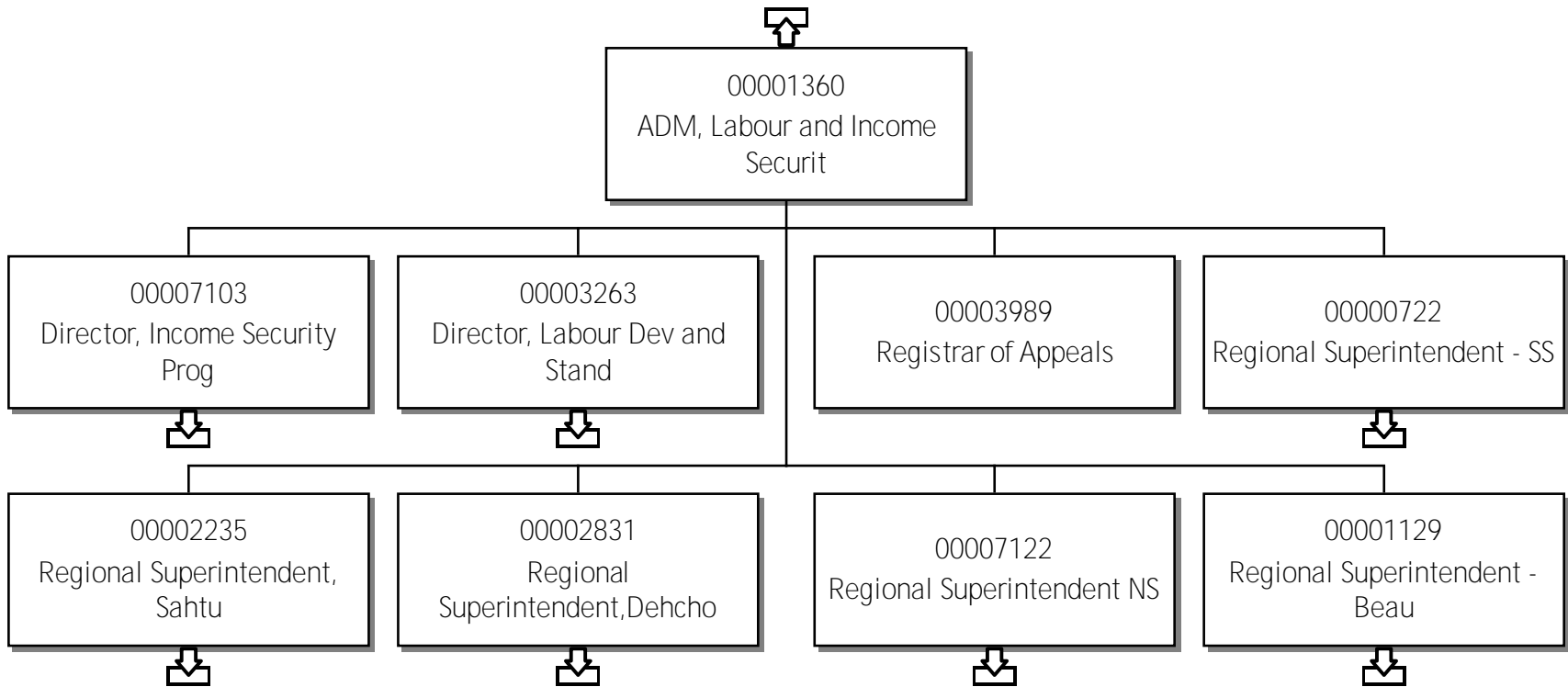






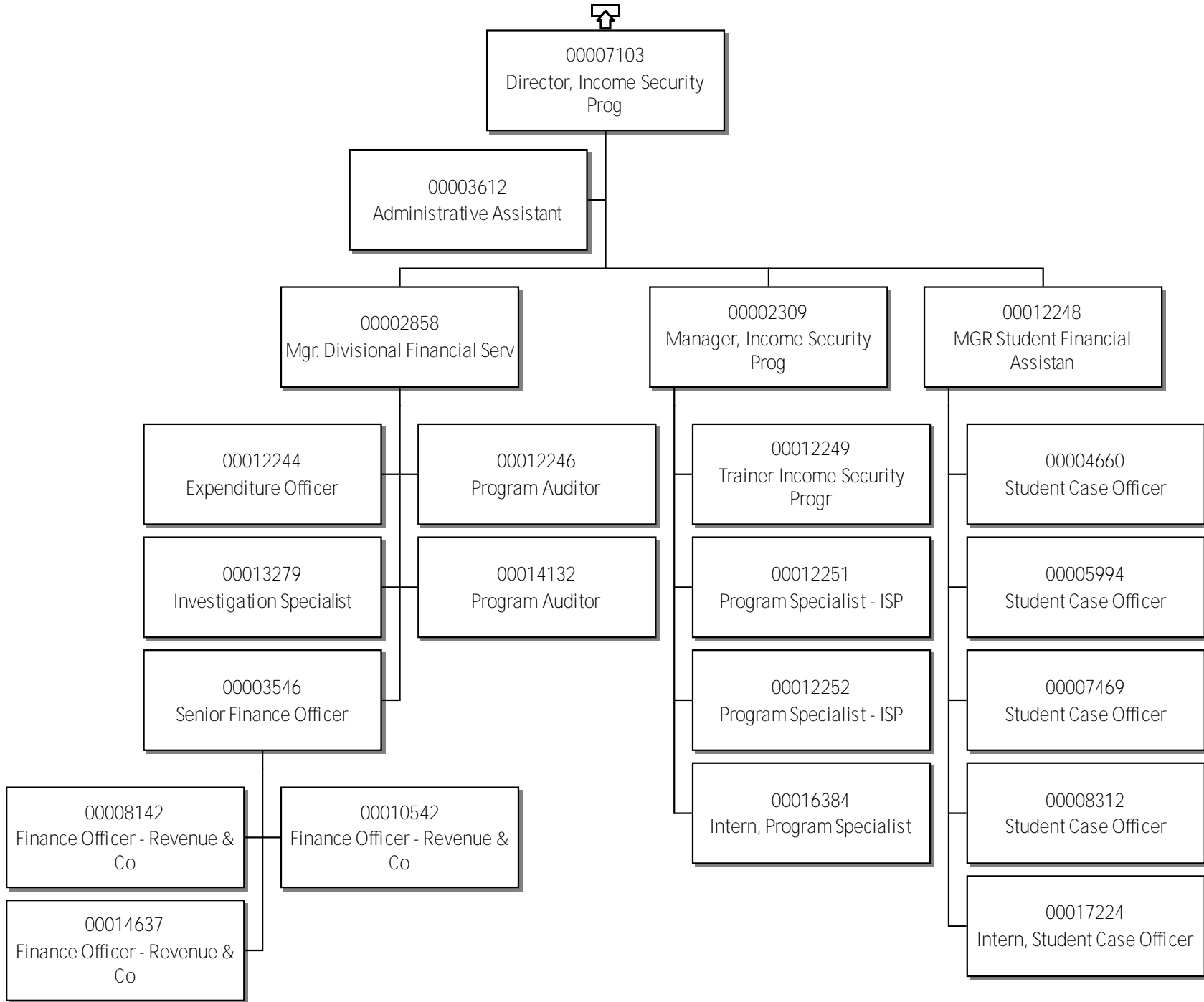




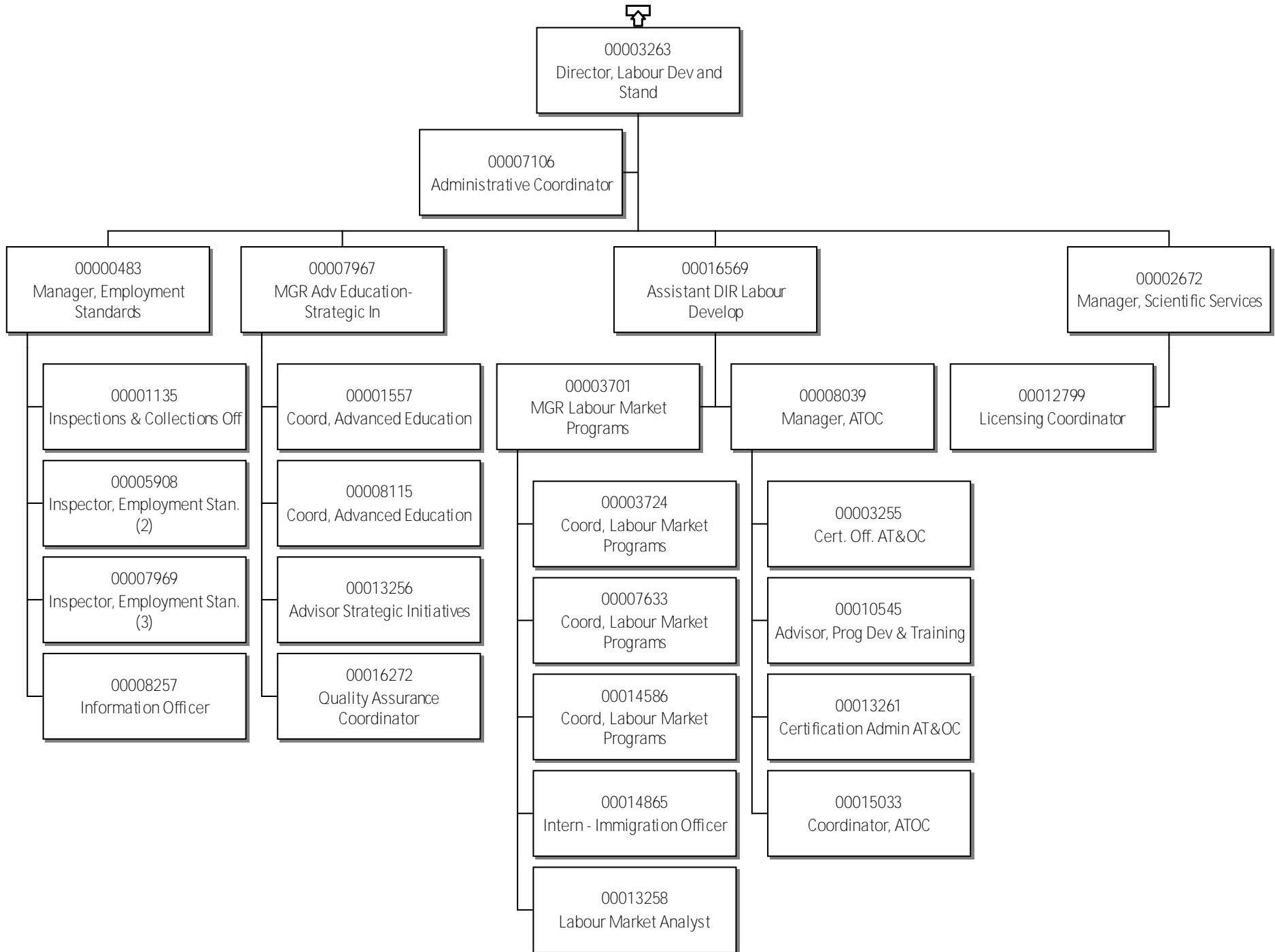


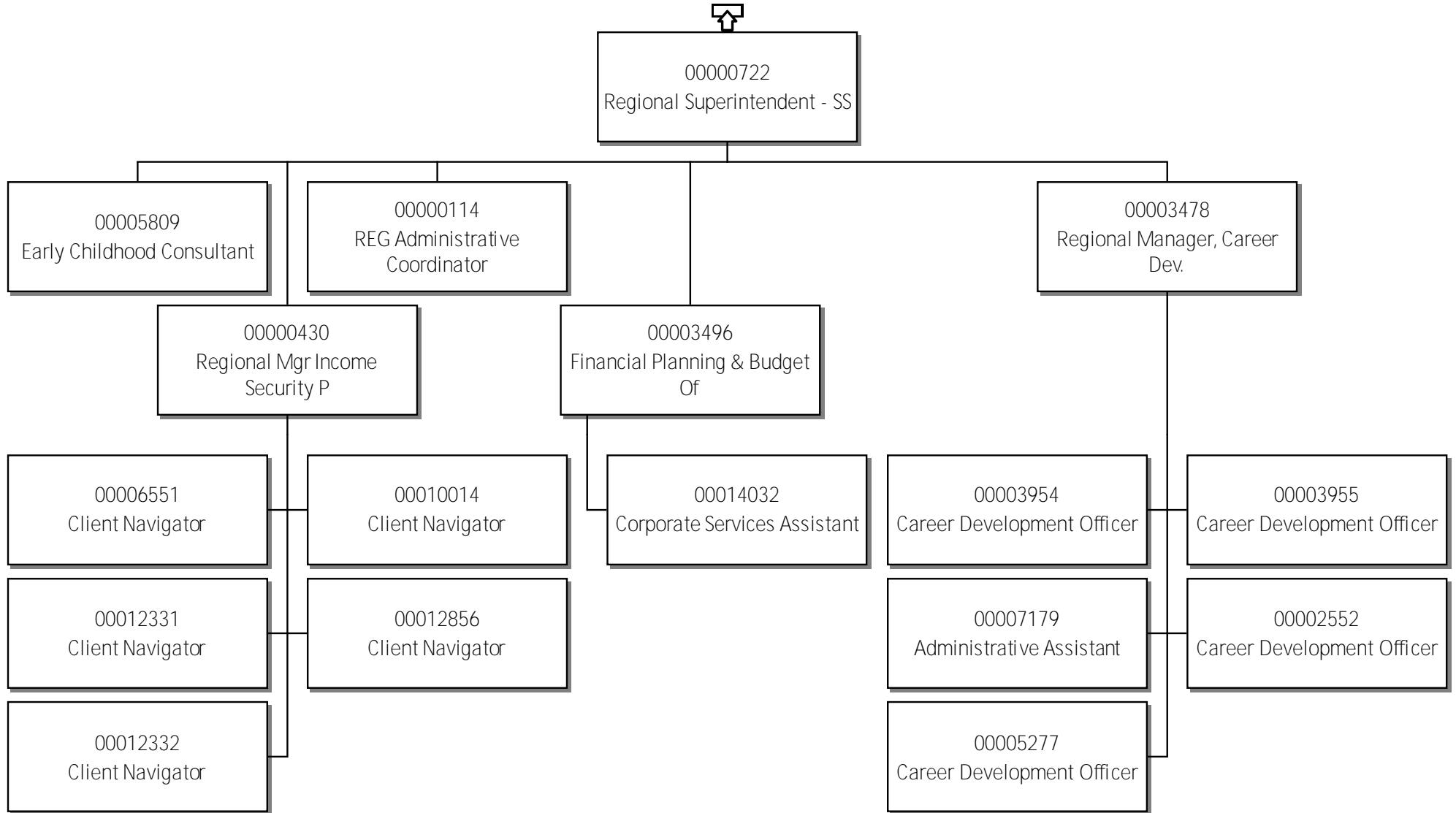


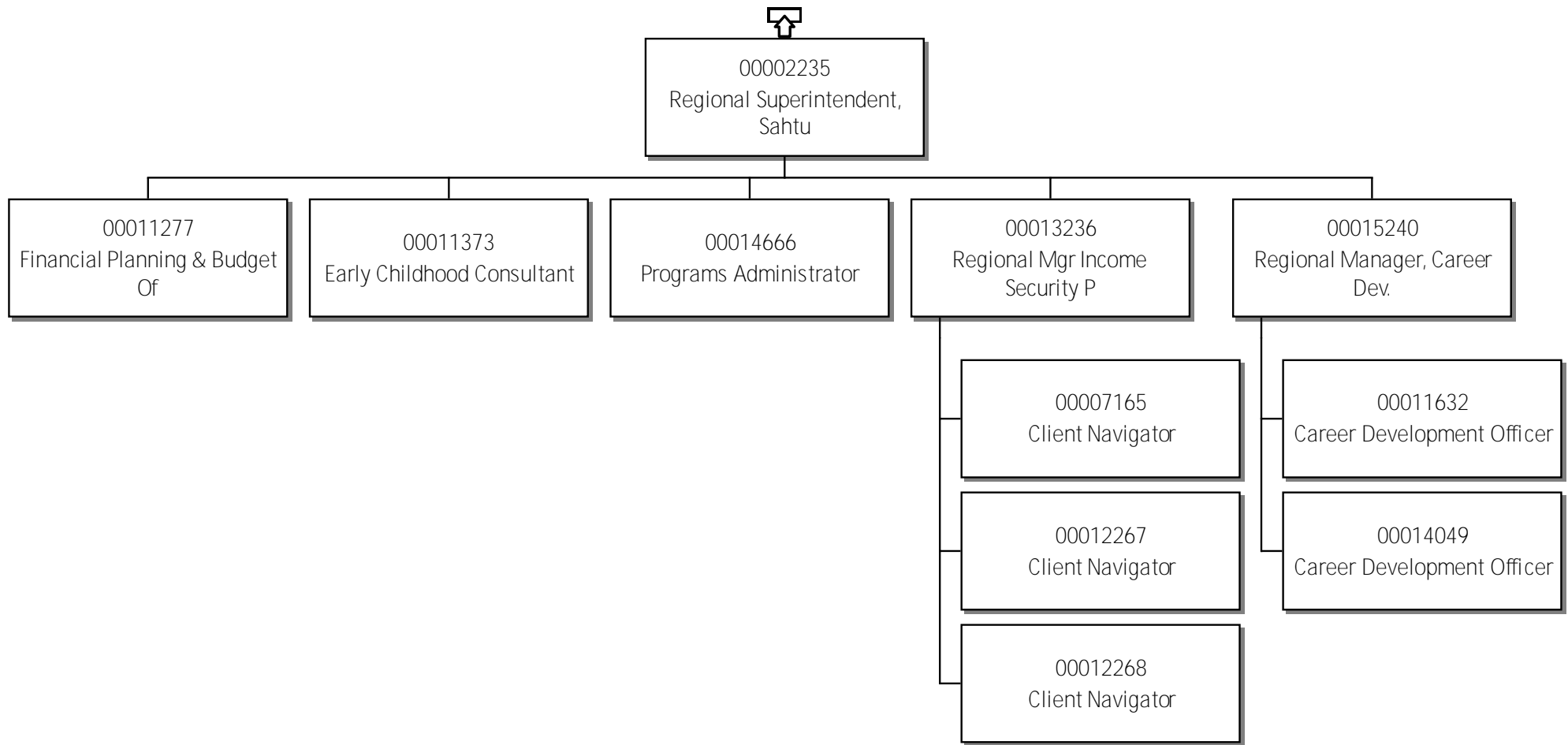
# 71-Education, Culture & Employment Director, Income Security Prog

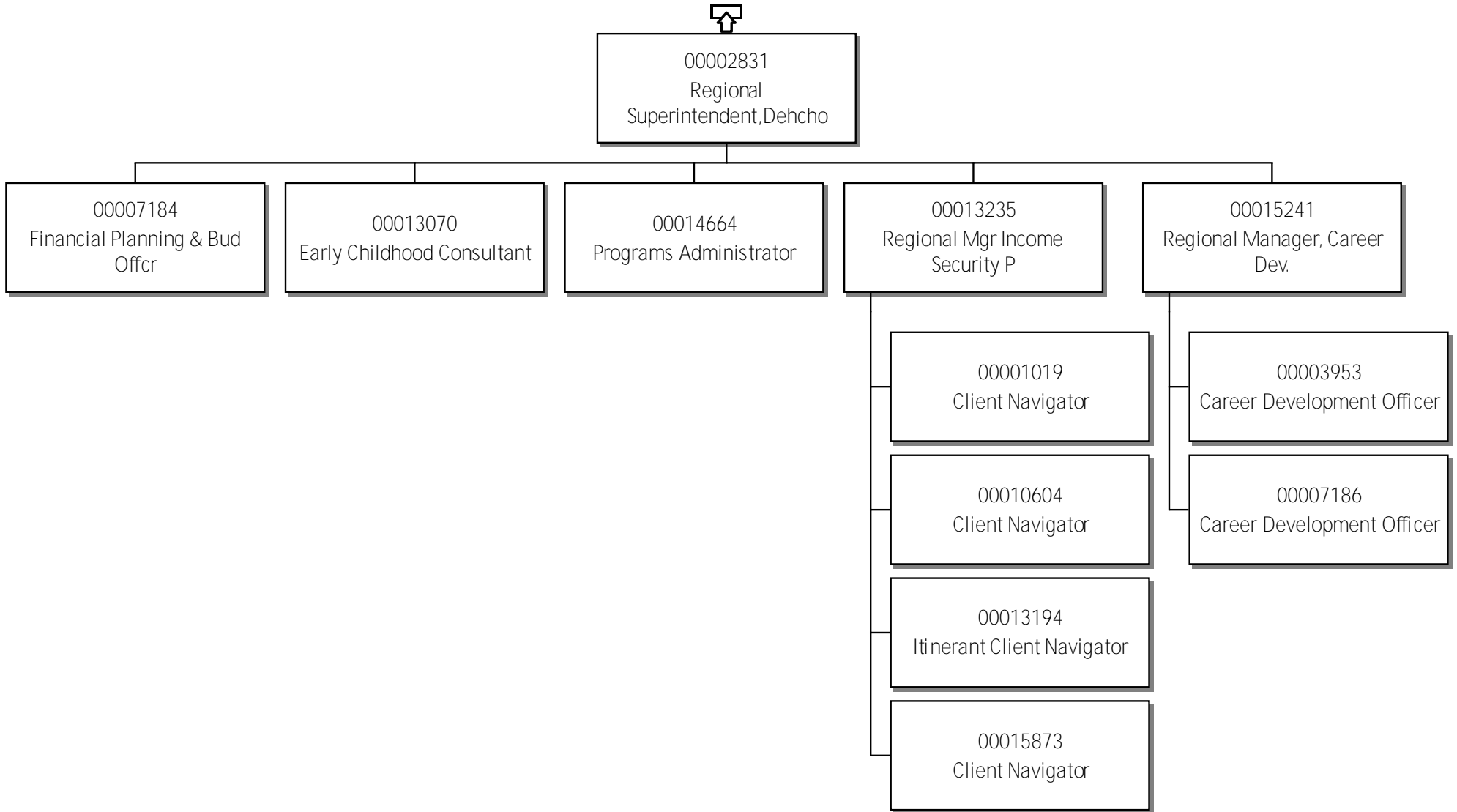


# 71-Education, Culture & Employment Director, Labour Dev and Stand

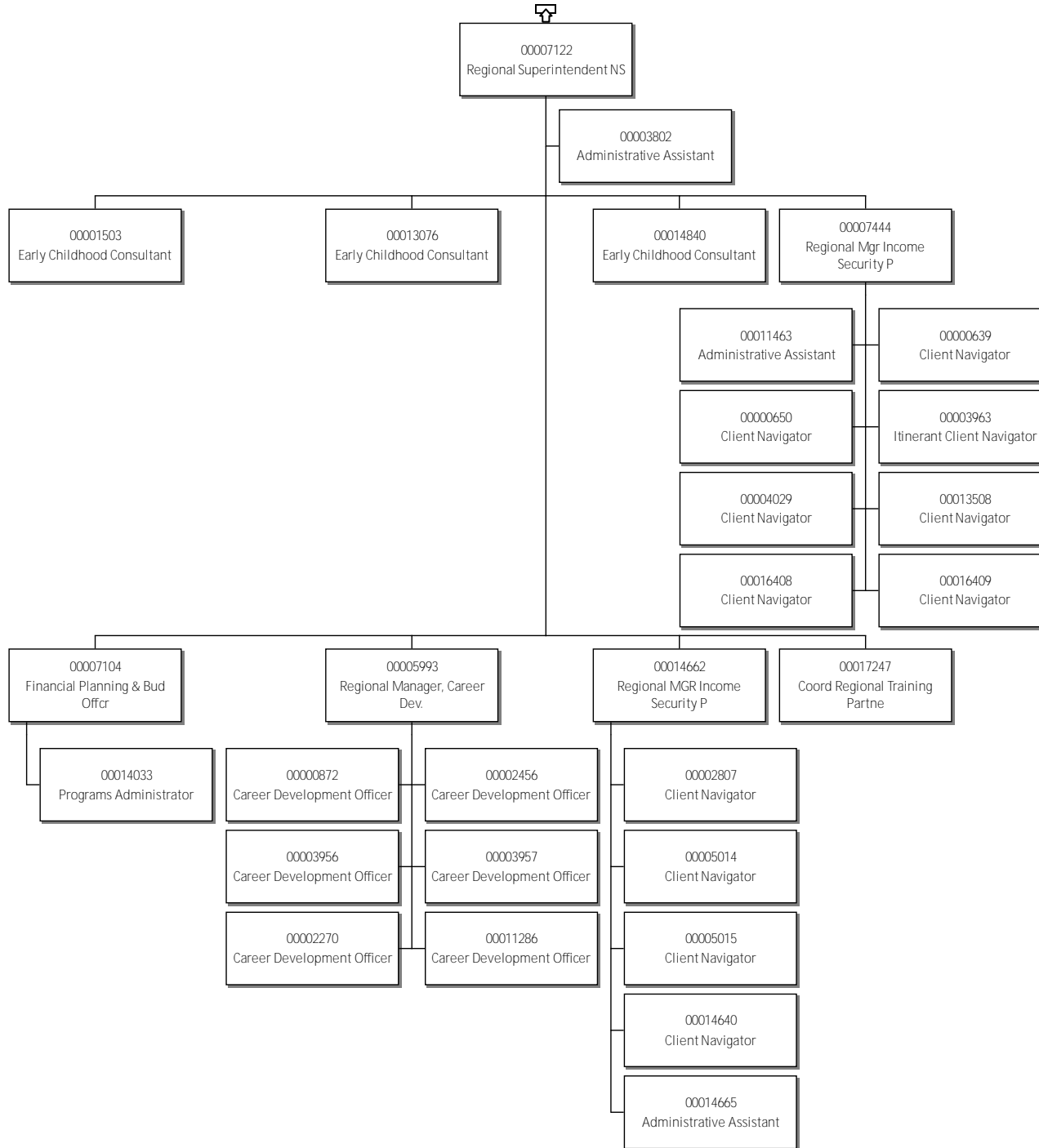




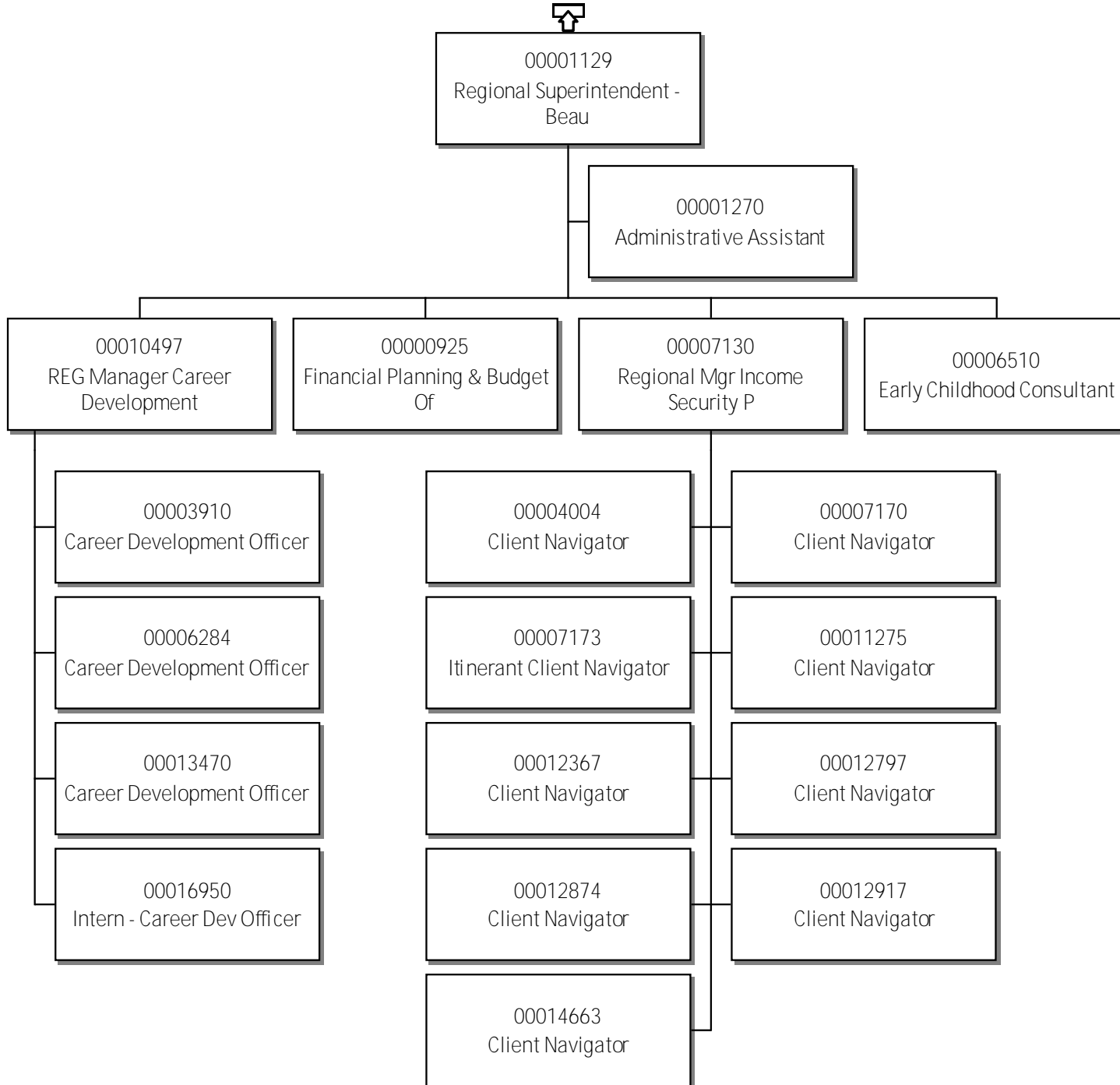


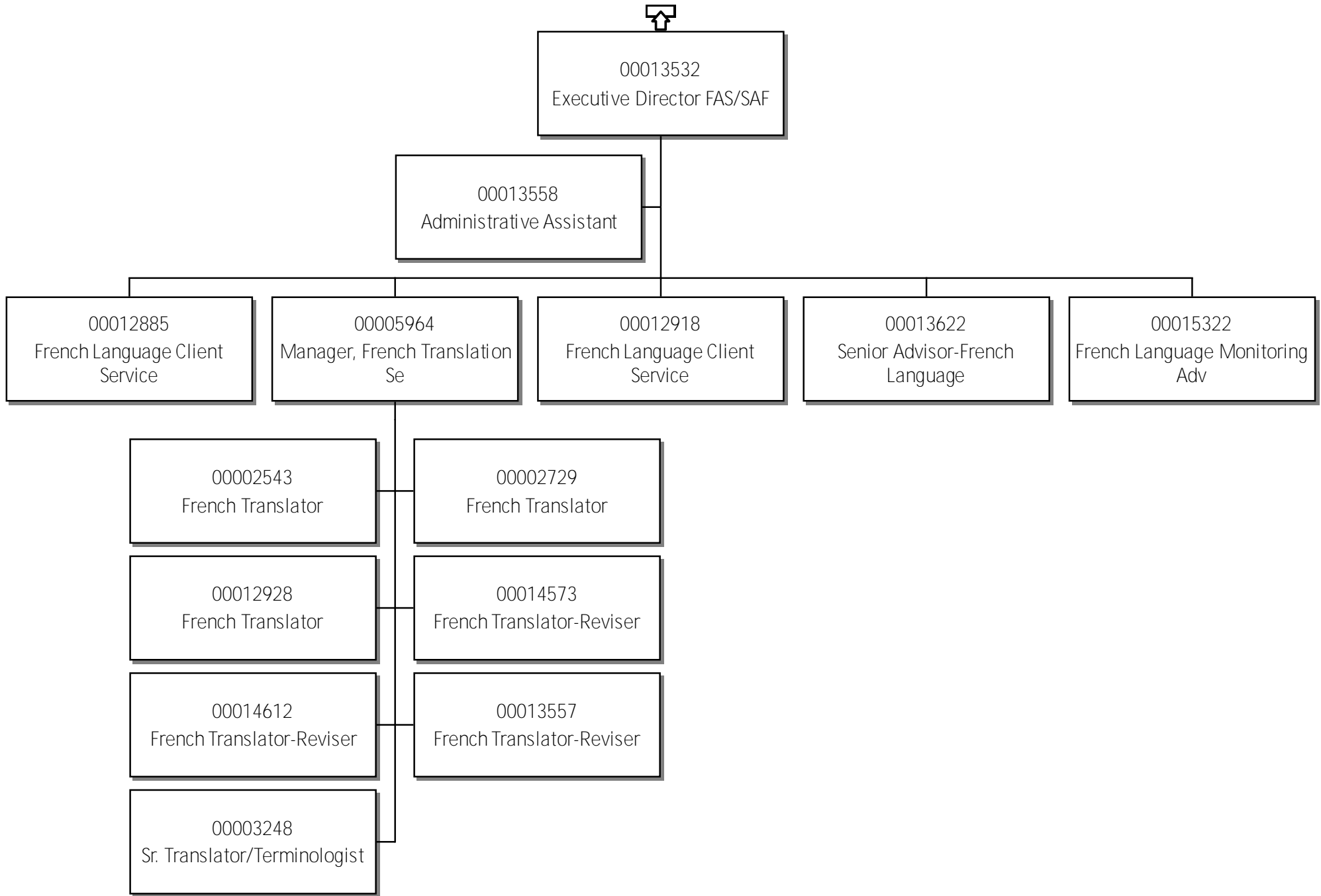


# 71-Education, Culture & Employment Regional Superintendent NS

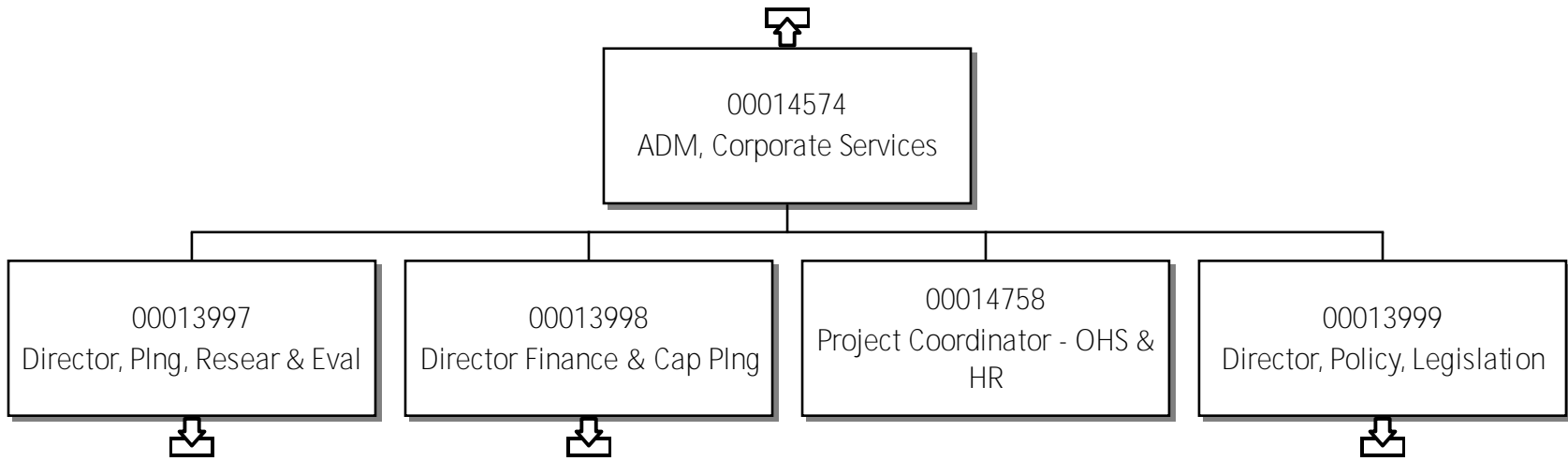


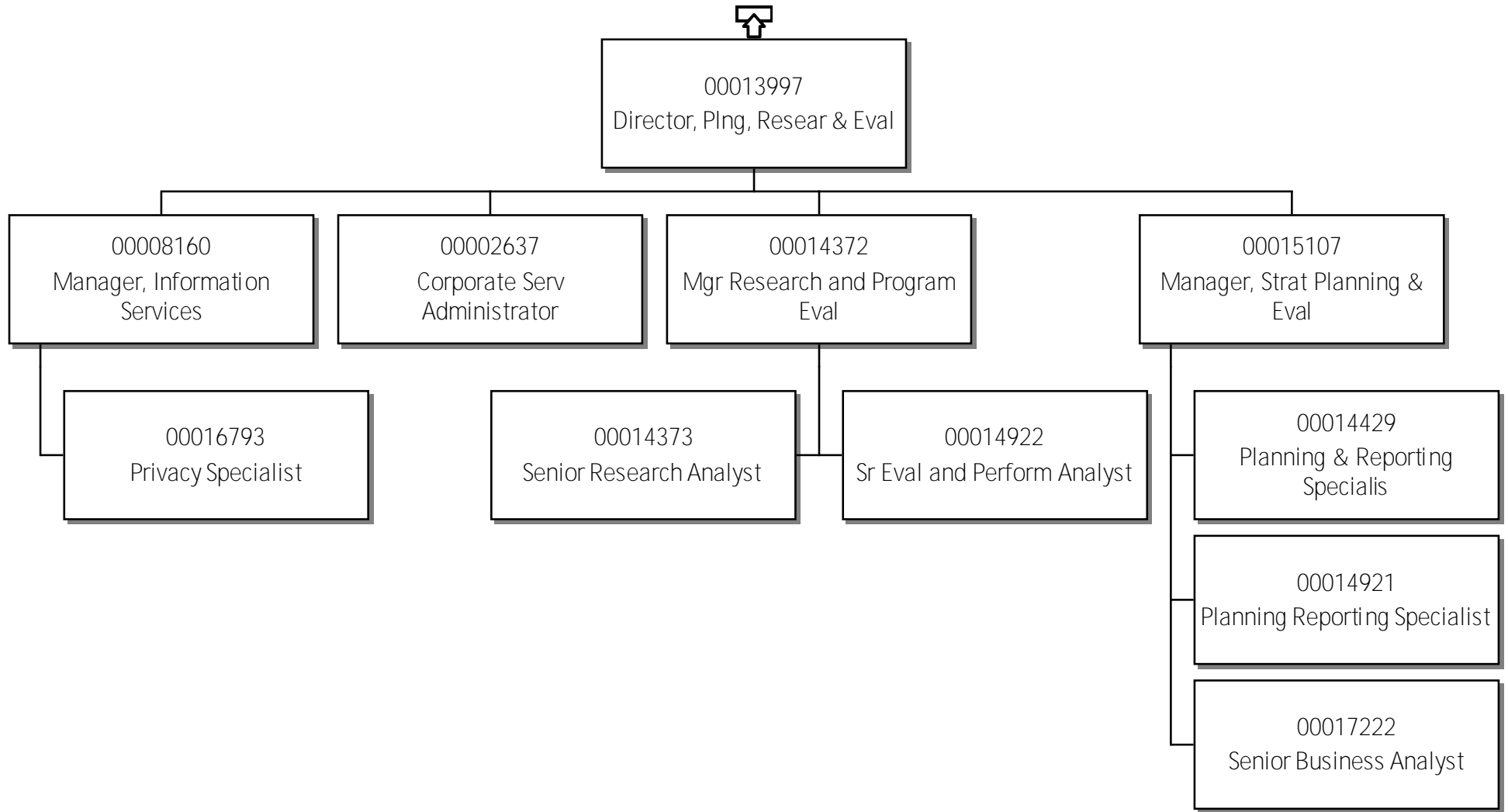
# 71-Education, Culture & Employment Regional Superintendent - Beau











# 71-Education, Culture & Employment Director Finance & Cap Plng

