



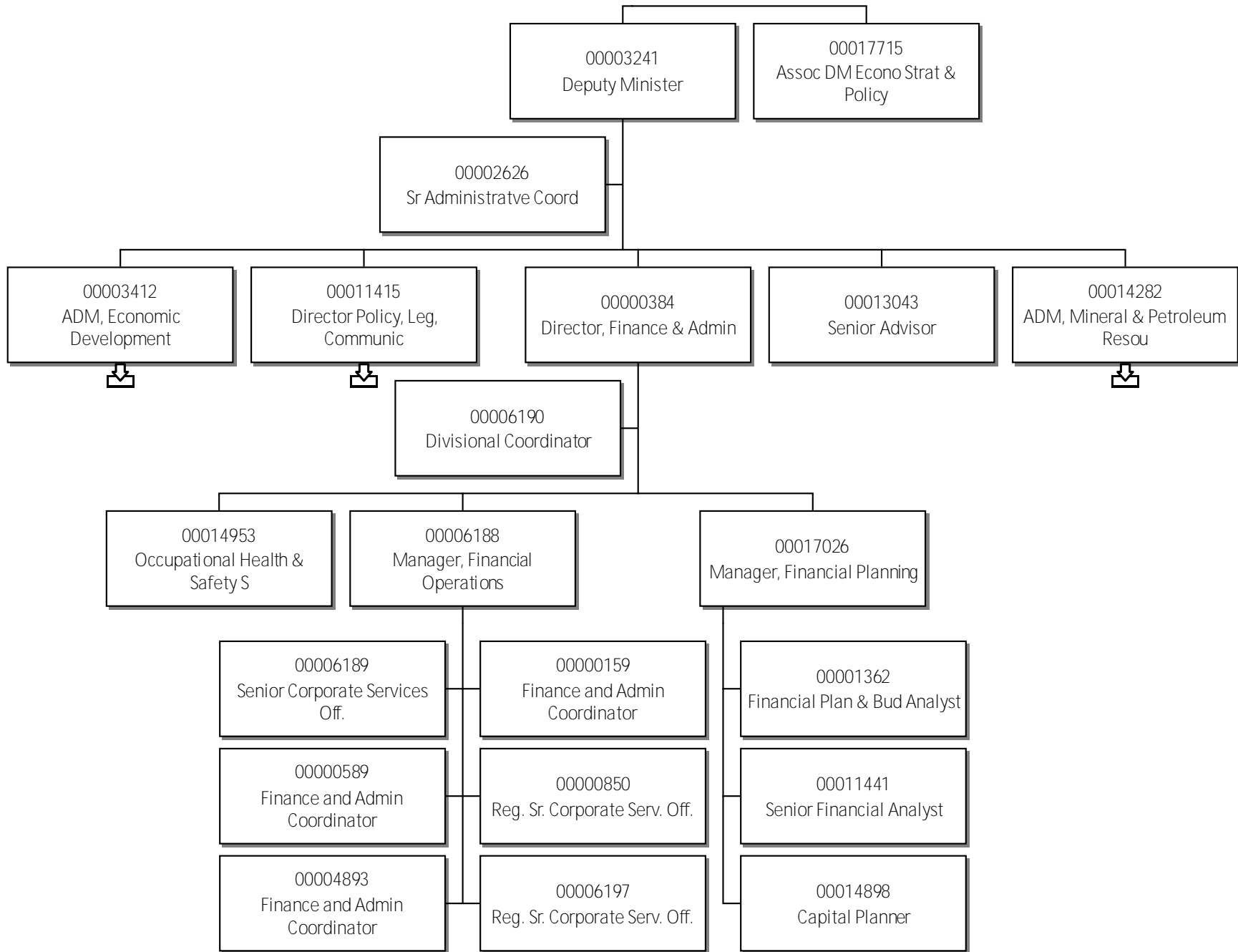
63 - Industry, Tourism & Investment

Organizational Chart

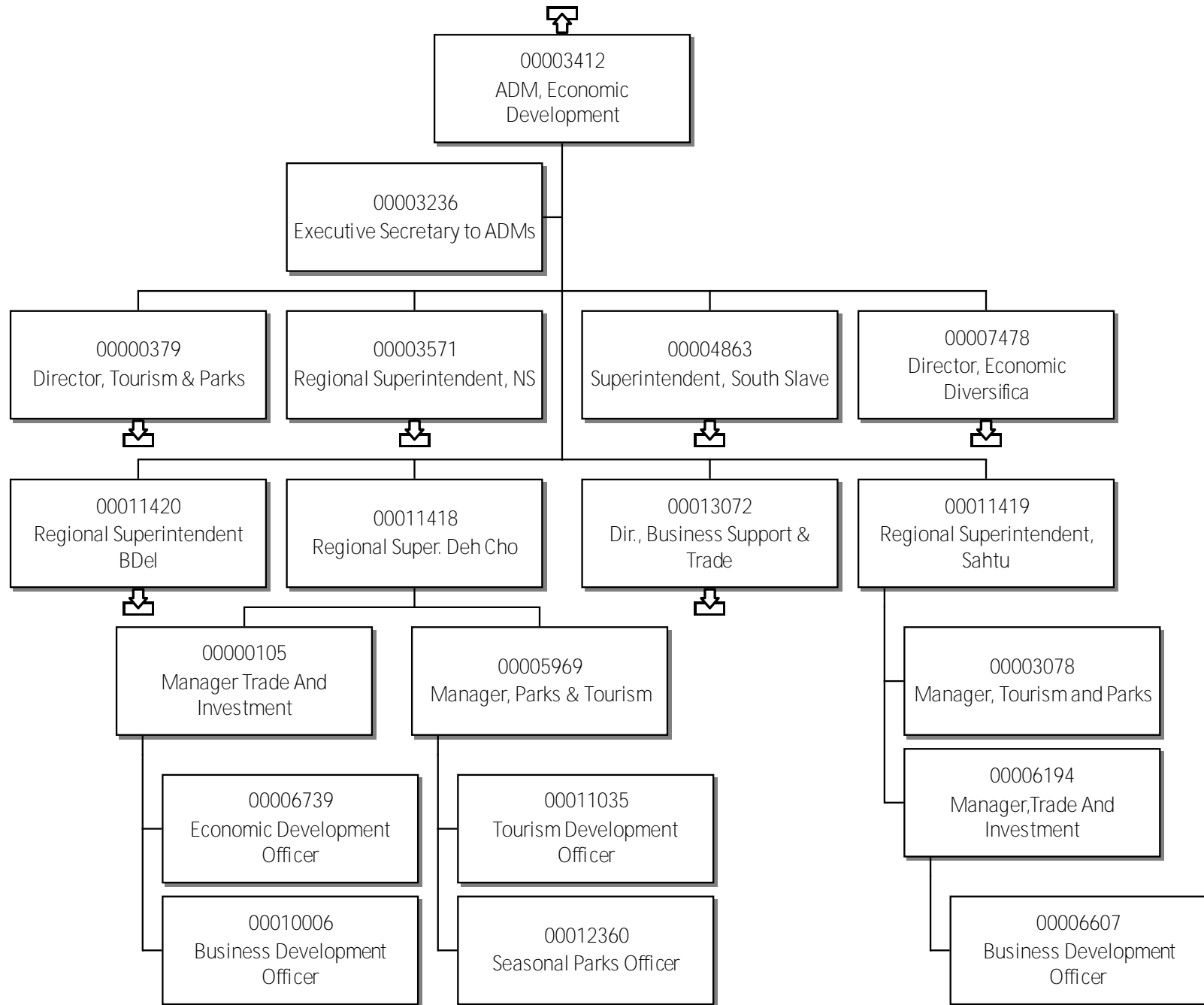
Contents

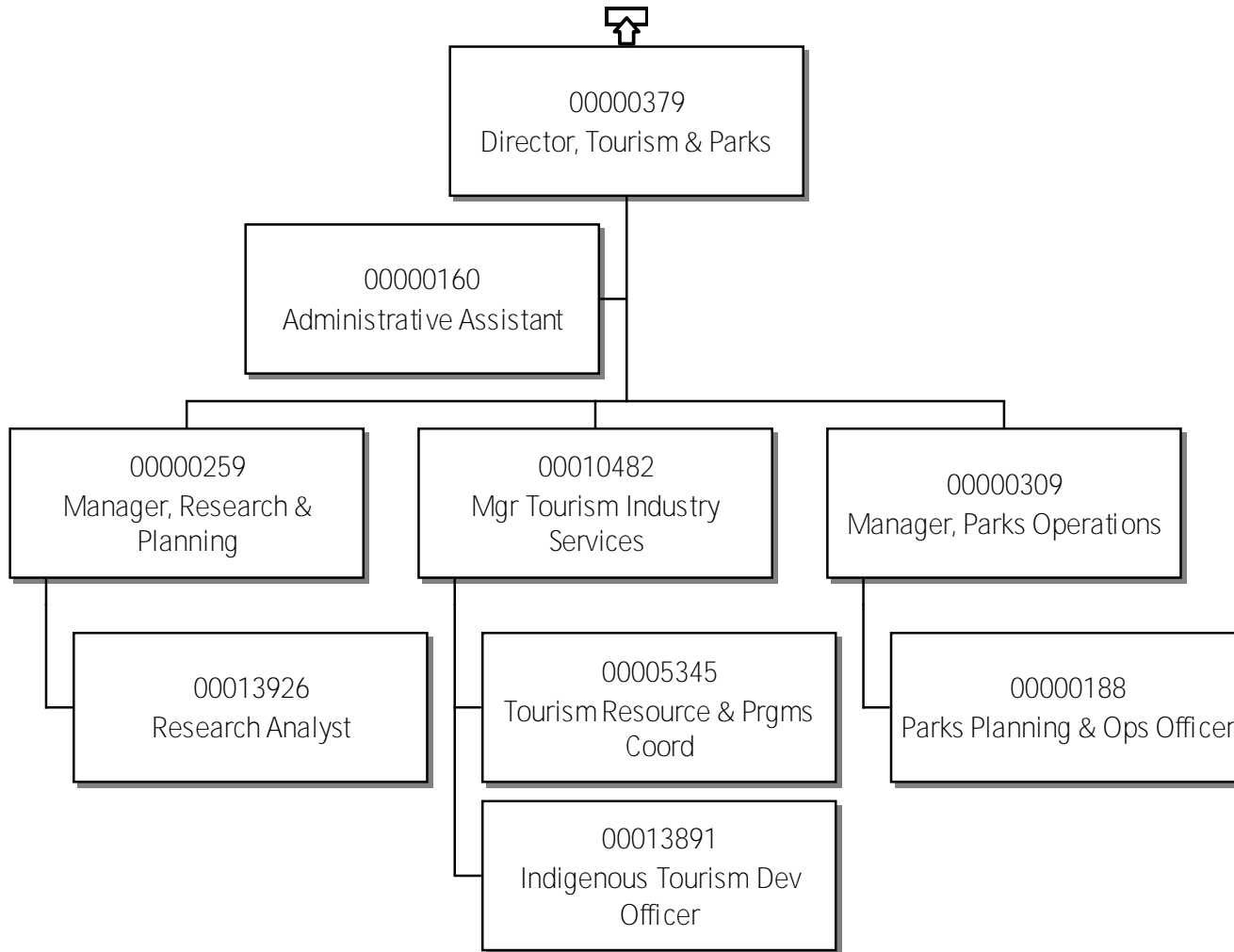
63-ITI - May 13, 2026 - Web.....	1
Contents.....	2
Deputy Minister.....	3
ADM, Economic Development.....	4
Director, Tourism & Parks.....	5
Superintendent, North Slave.....	6
Senior Parks & Tourism Officer.....	7
Superintendent, South Slave.....	8
Director, Economic Diversification.....	9
Regional Superintendent BDel.....	10
Dir., Business Support & Trade.....	11
Dir., Policy, Legis and Comm.....	12
ADM, Mineral & Petroleum Resou.....	13
Director Mineral & Petroleum R.....	14
Director NWT Geological Survey.....	15

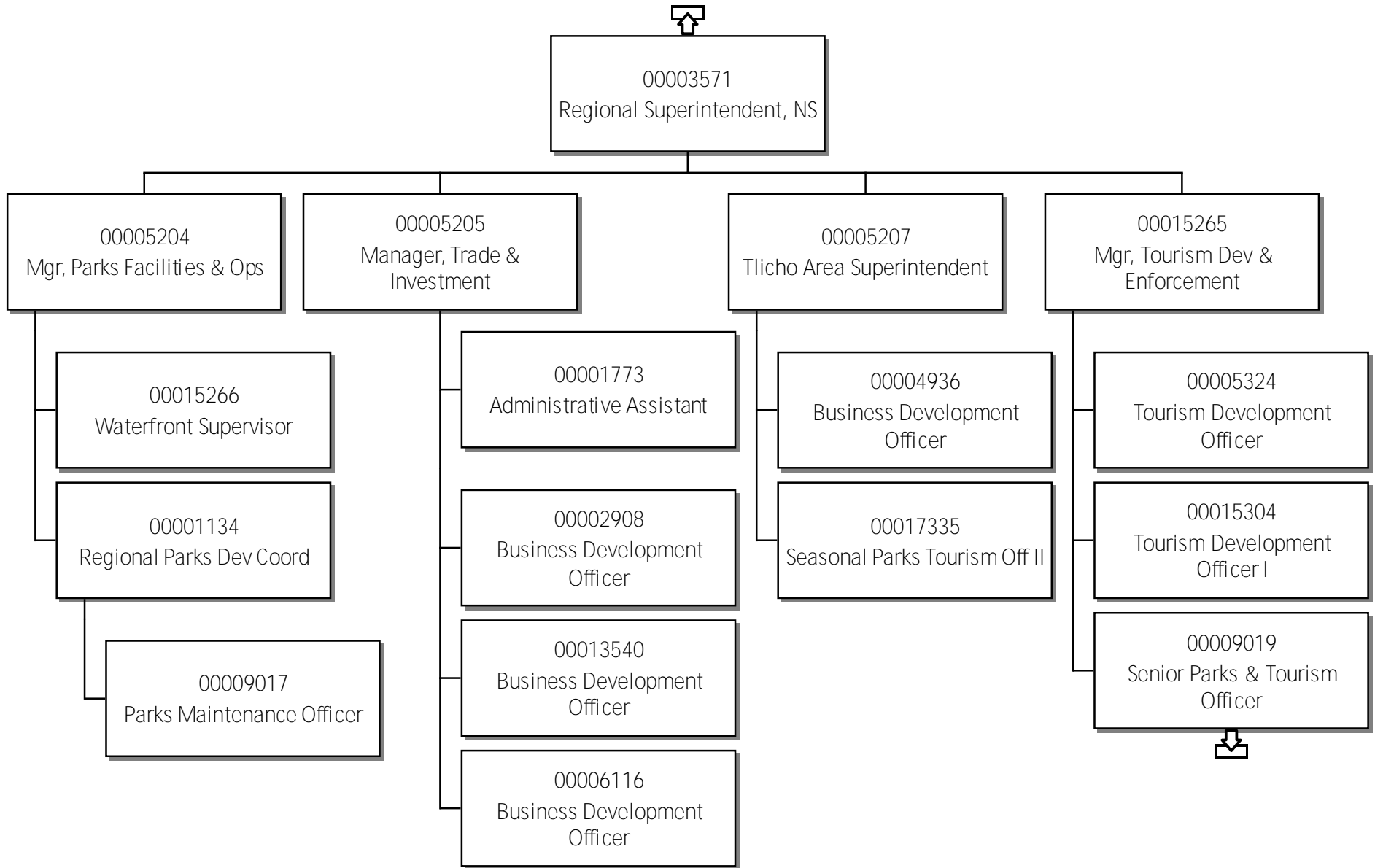
63-Industry, Tourism & Investment Deputy Minister

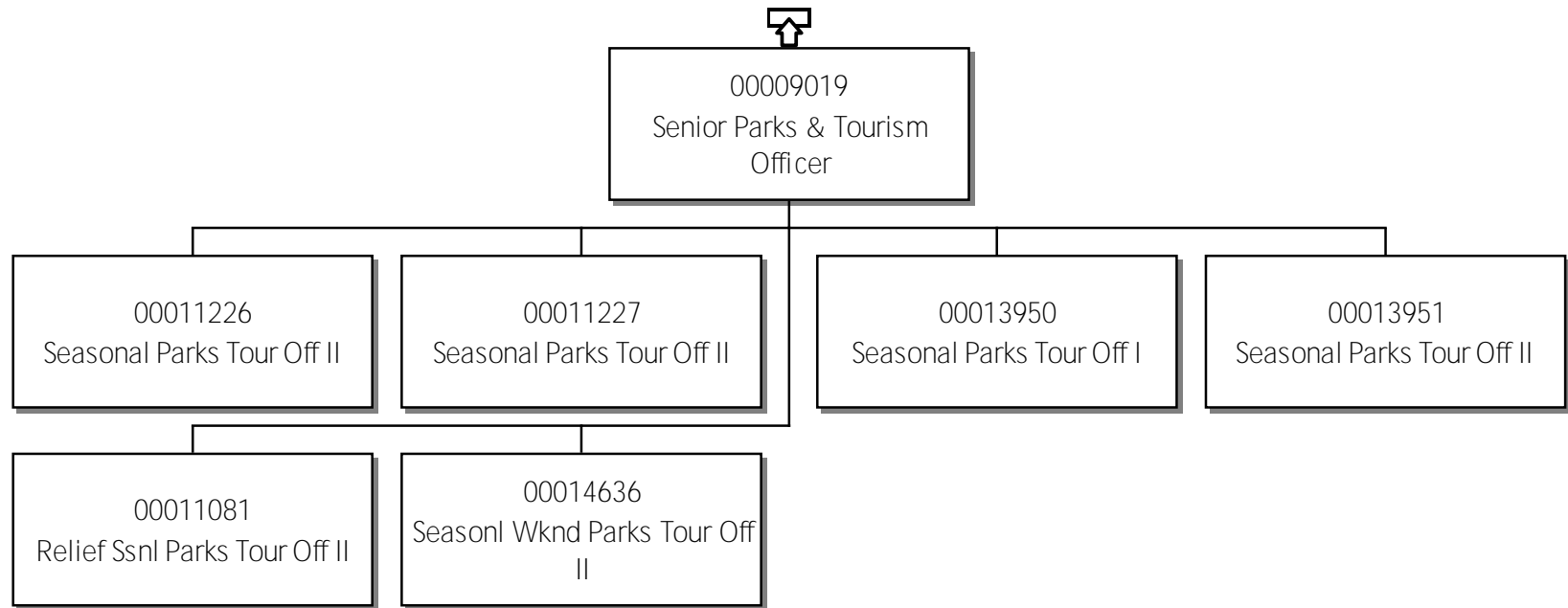


63-Industry, Tourism & Investment ADM, Economic Development

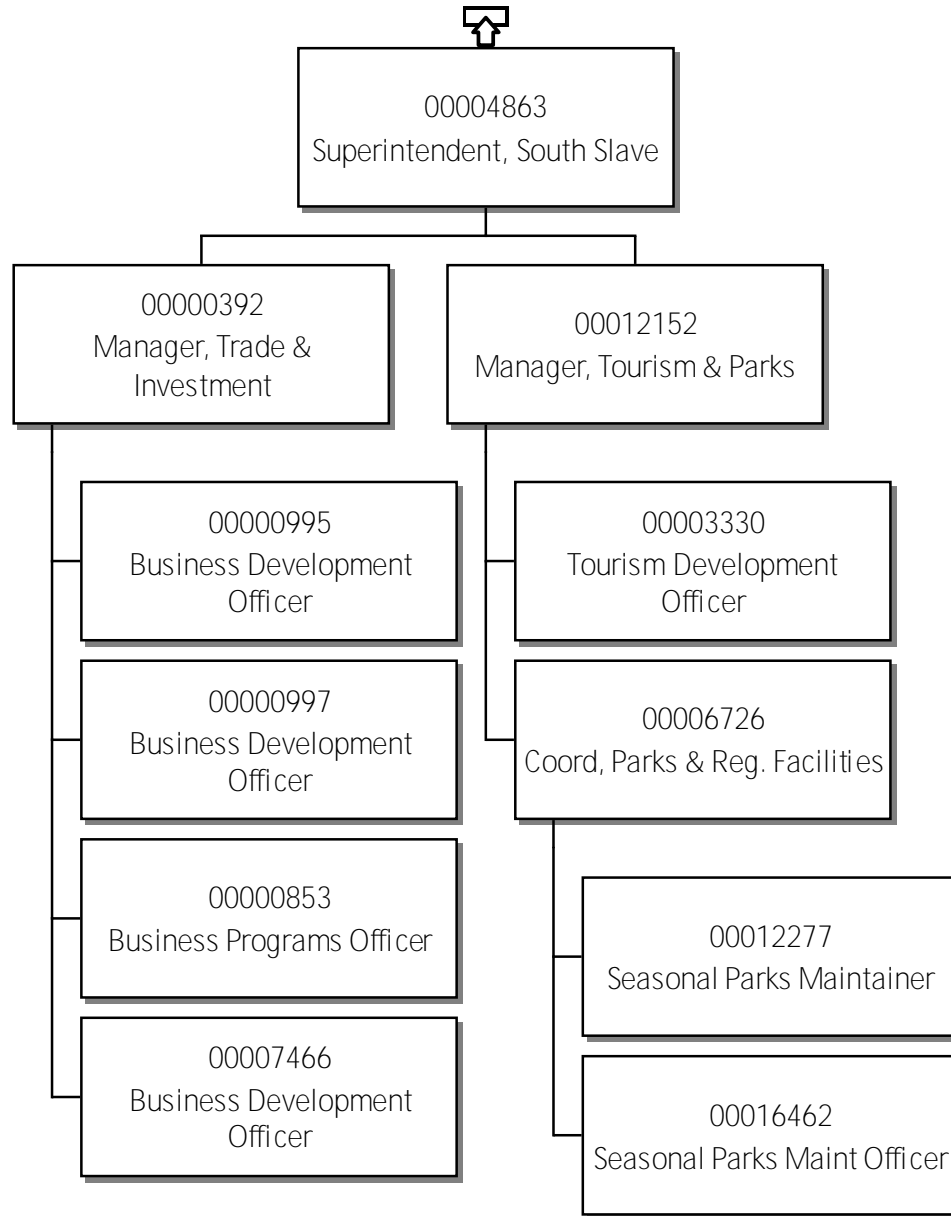


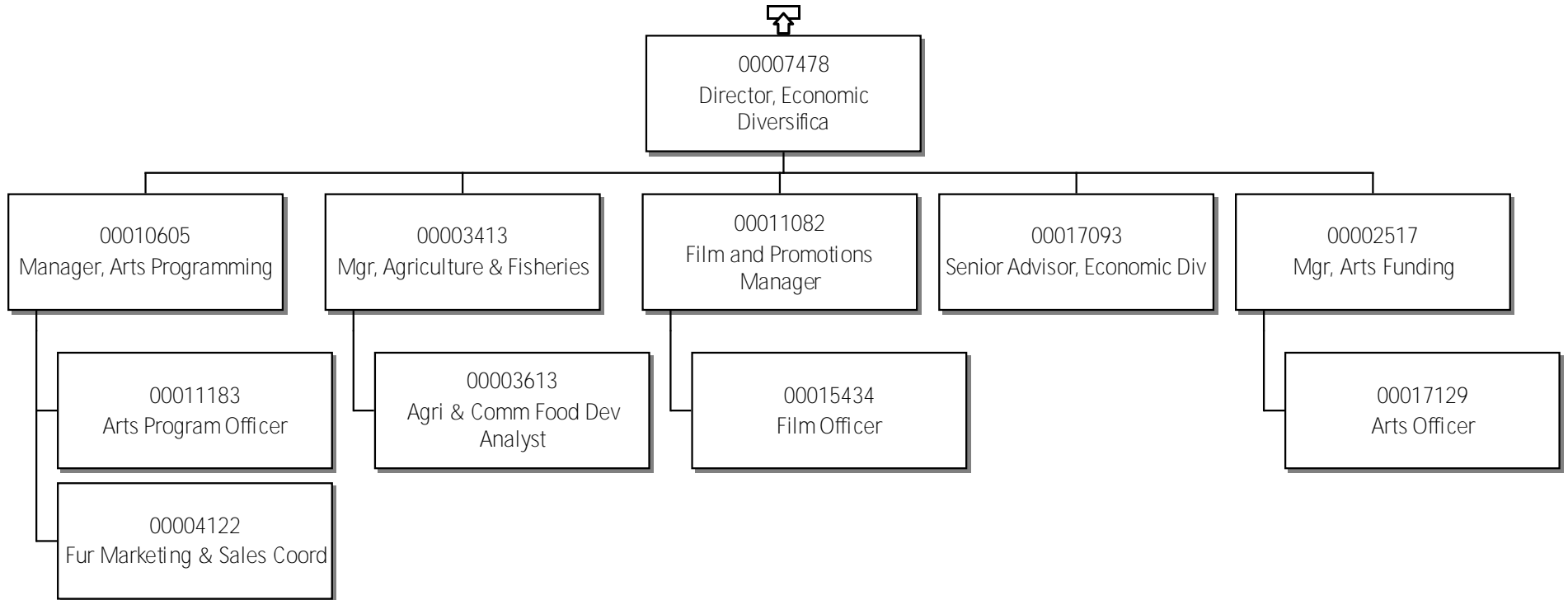




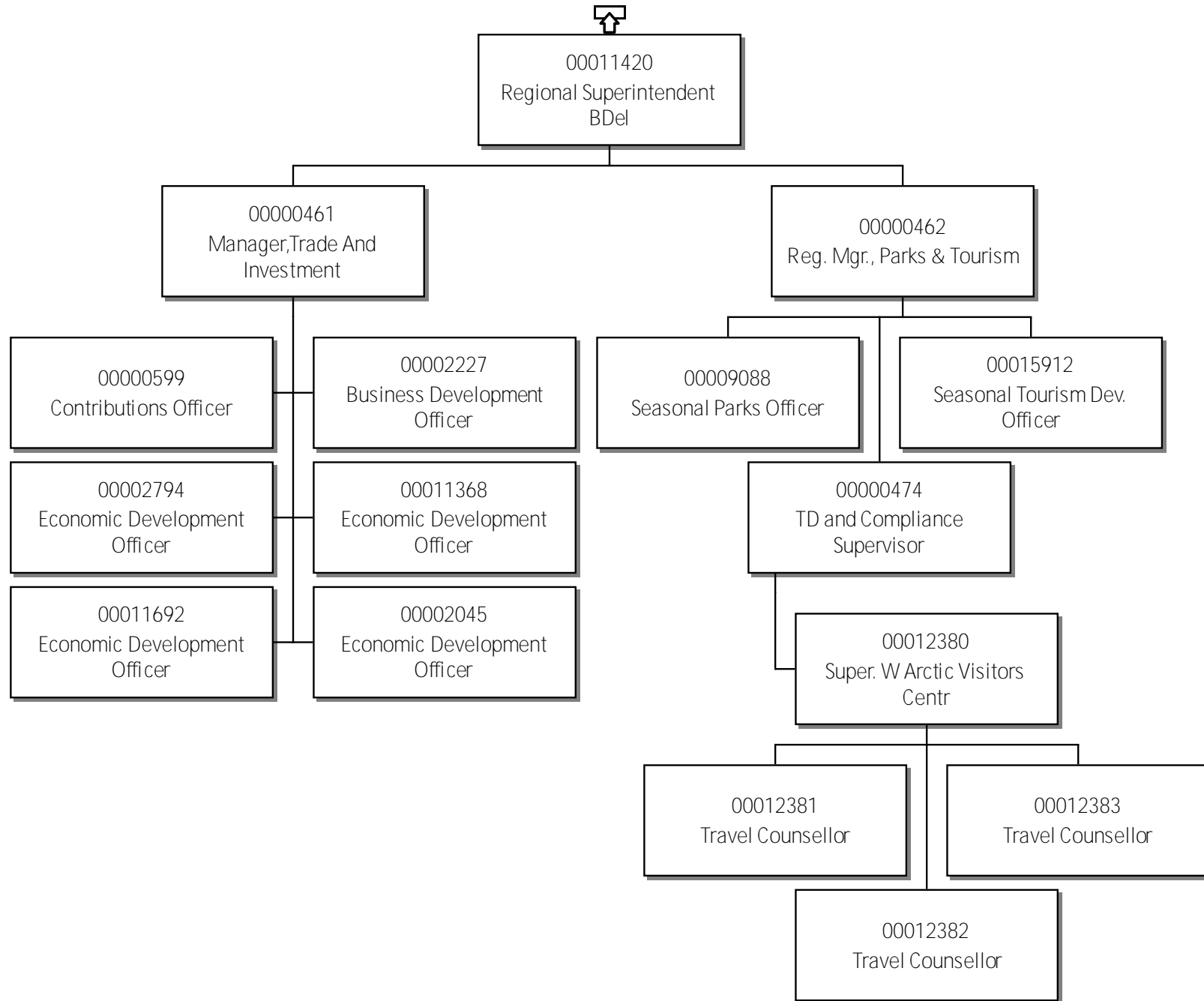


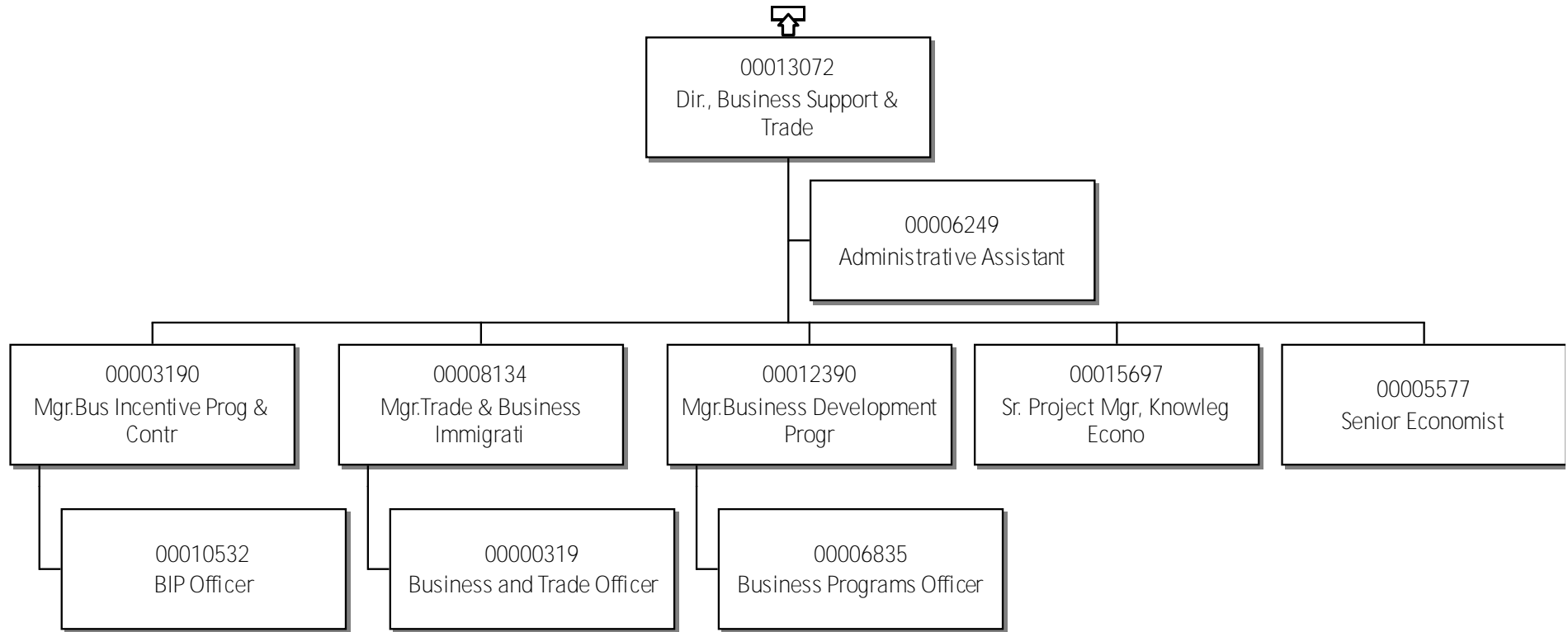
63-Industry, Tourism & Investment
Superintendent, South Slave

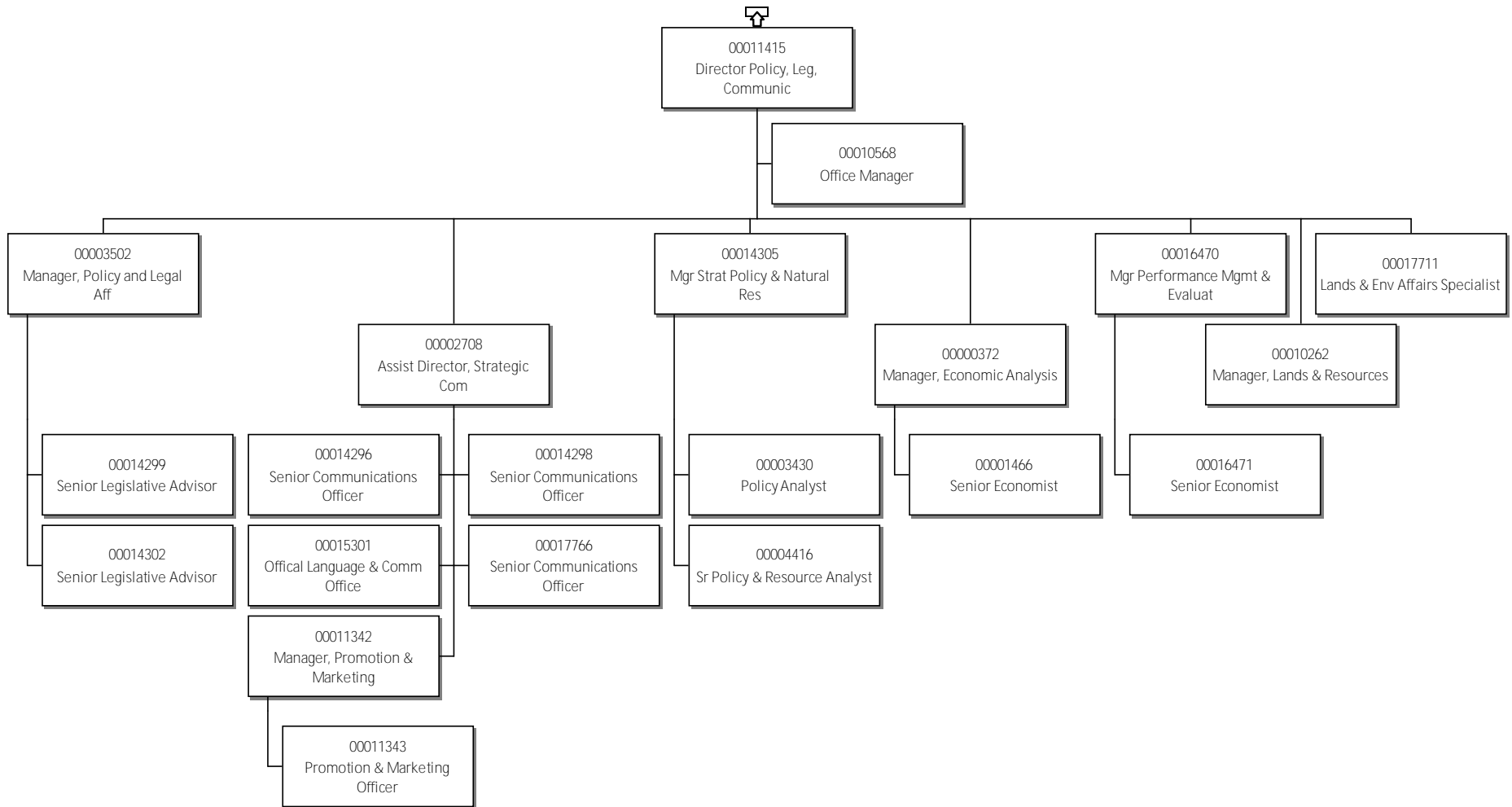


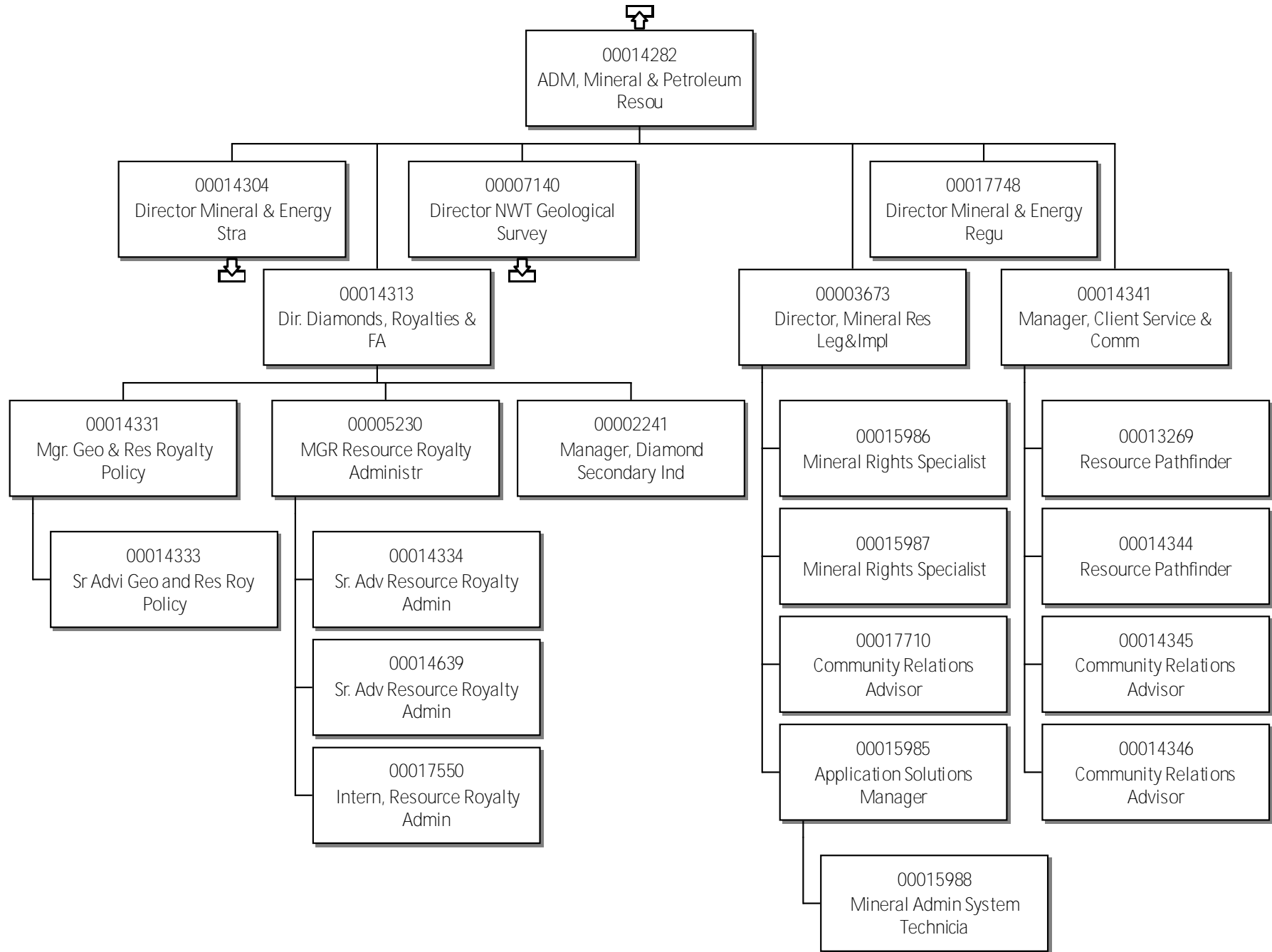


63-Industry, Tourism & Investment
Regional Superintendent BDeI









63-Industry, Tourism & Investment Director Mineral & Petroleum R

