

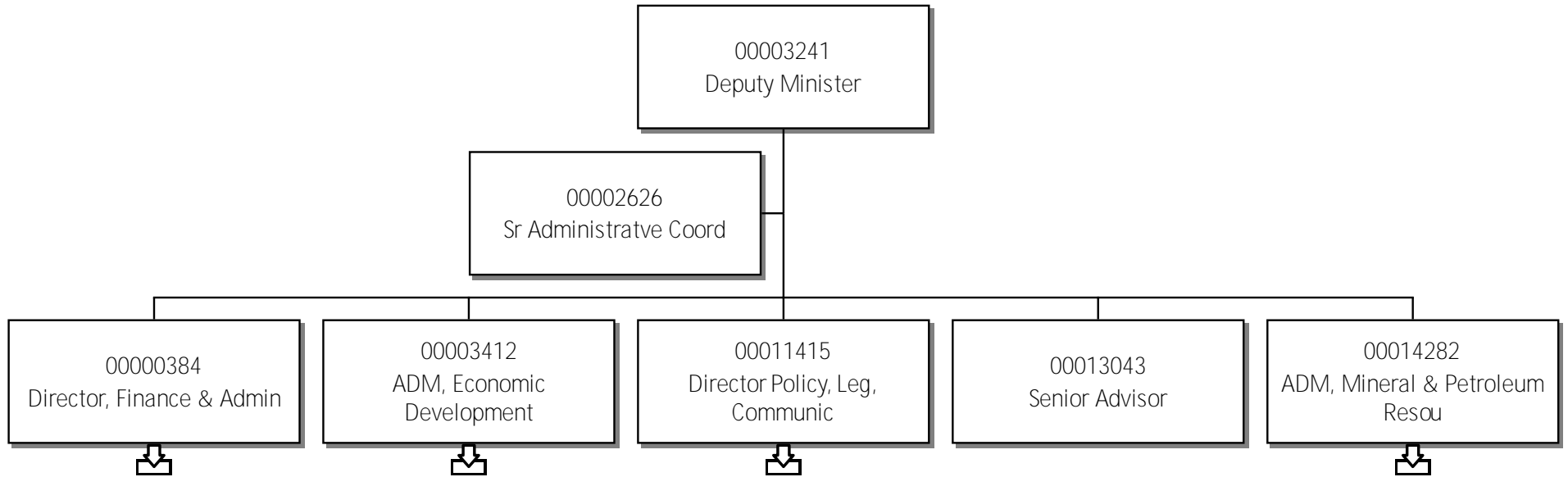


63 - Industry, Tourism & Investment

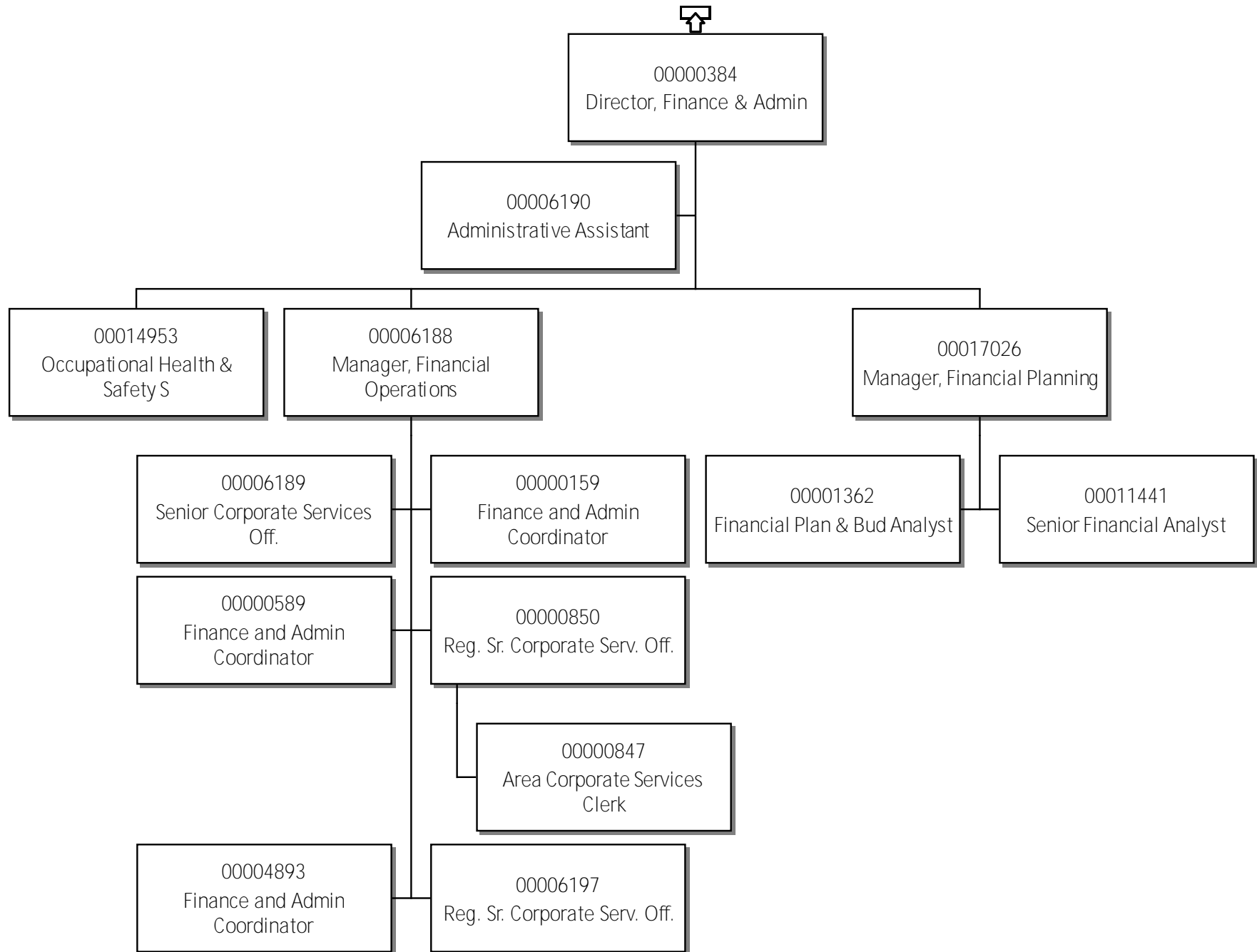
Organizational Chart

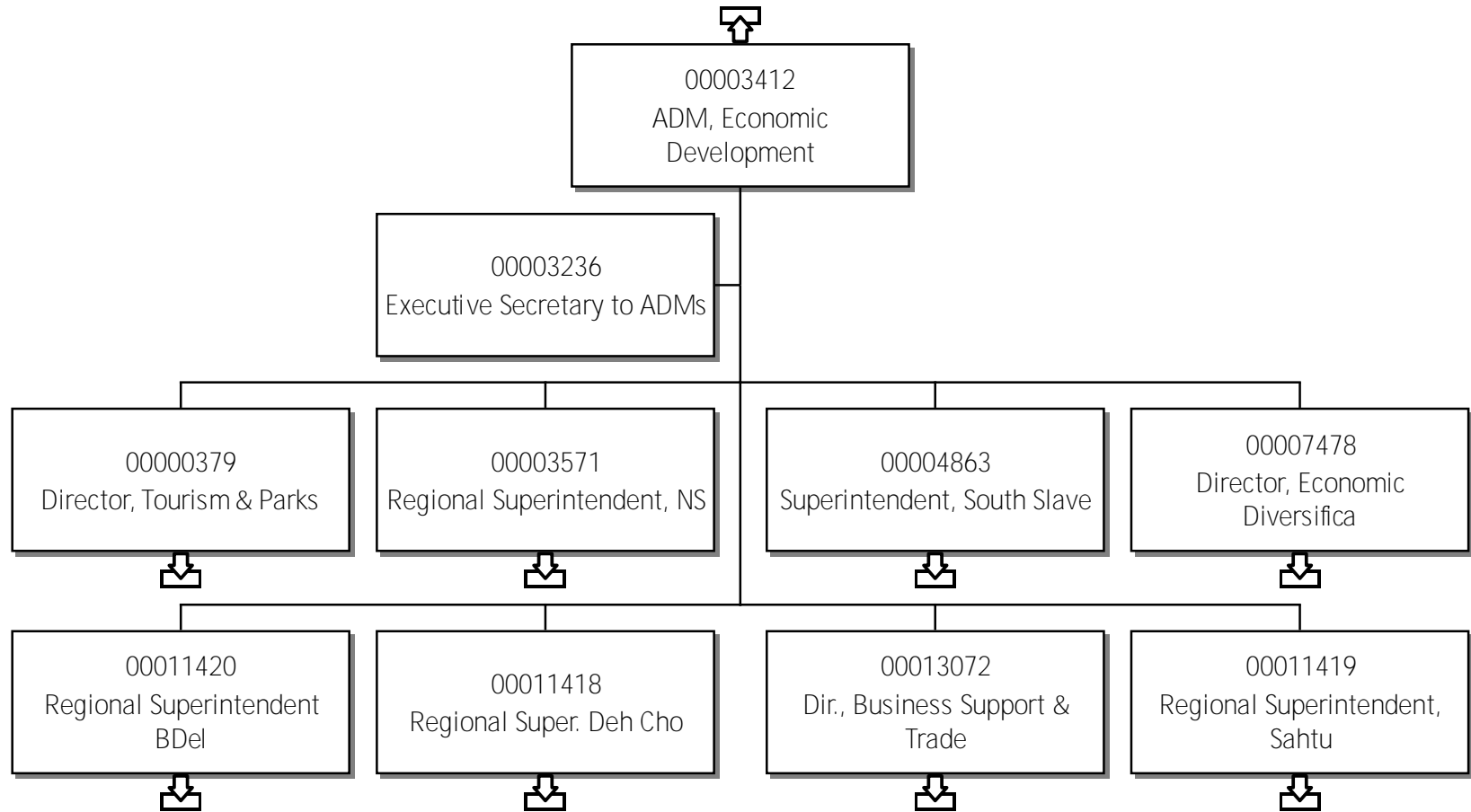
Contents

63-ITI - April 2, 2025 - Web.....	1
Contents.....	2
Deputy Minister.....	3
Director, Finance & Admin.....	4
ADM, Economic Development.....	5
Director, Tourism & Parks.....	6
Superintendent, North Slave.....	7
Senior Parks & Tourism Officer.....	8
Superintendent, South Slave.....	9
Director, Economic Diversification.....	10
Regional Super. Inuvik.....	11
Reg. Mgr., Parks & Tourism.....	12
Regional Super. Deh Cho.....	13
Dir., Business Support T&EA.....	14
Regional Superintendent, Sahtu.....	15
Dir., Policy, Legis and Comm.....	16
ADM, Mineral & Petroleum Resou.....	17
Dir. Diamonds, Royalties & FA.....	18
Director Mineral & Petroleum R.....	19
Mining Recorder.....	20
Director,NWT Geoscience Office.....	21
Mgr, Mineral Depo & Bedrck Map.....	22

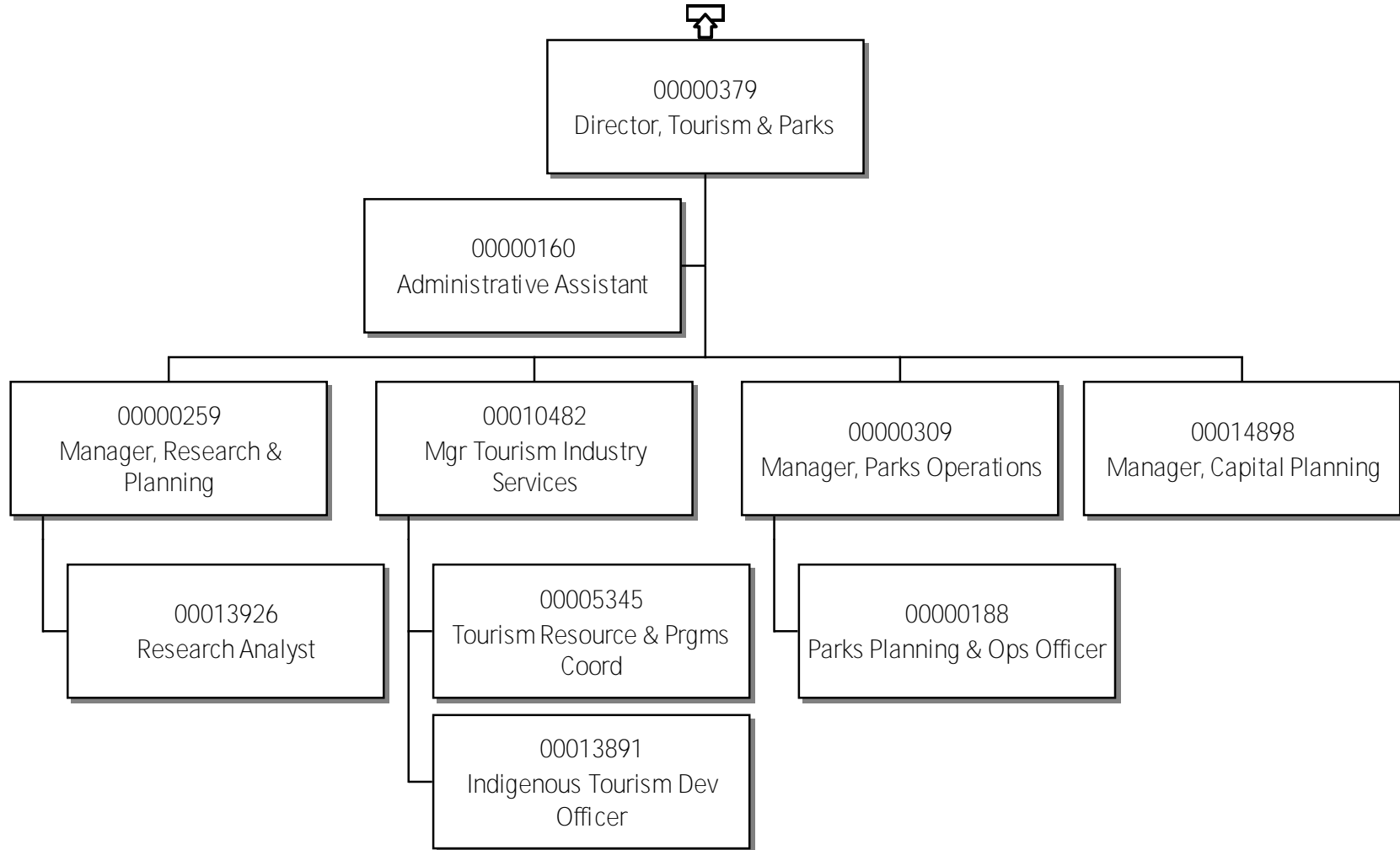


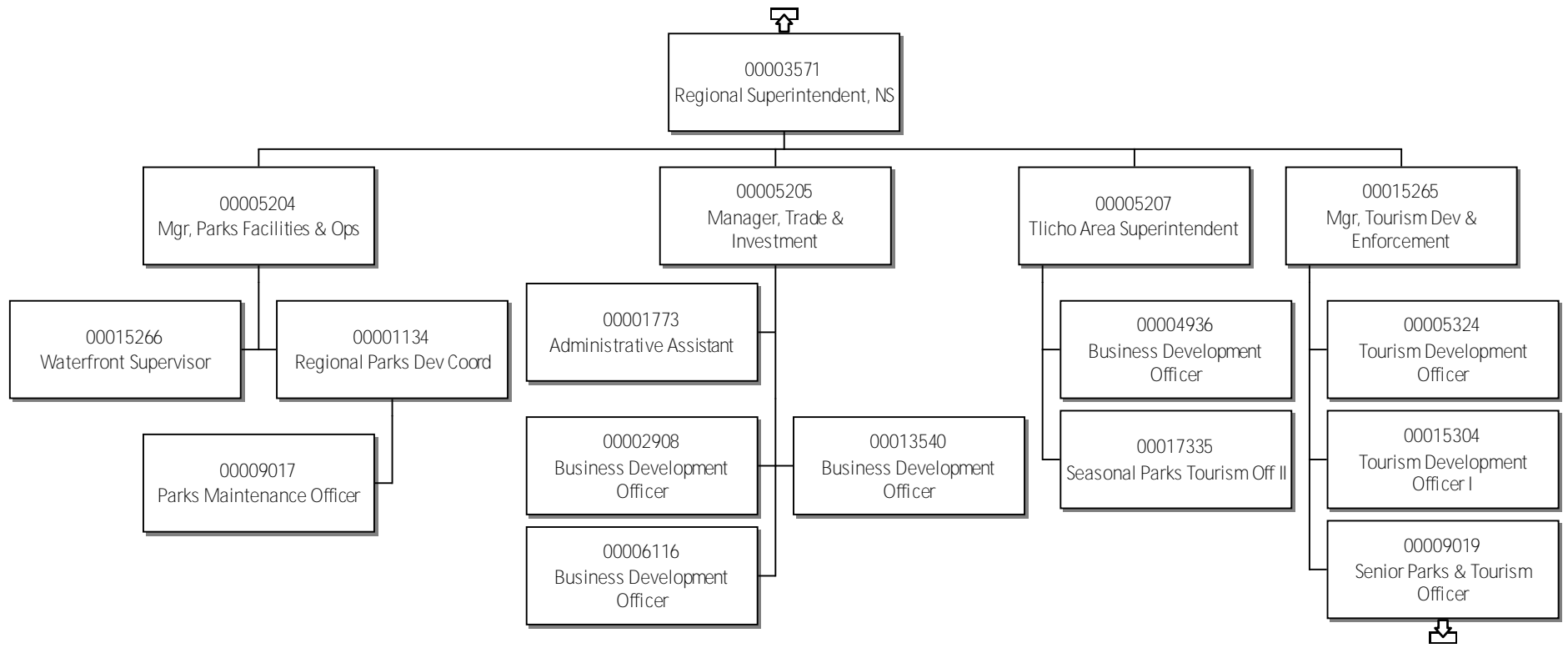
63-Industry, Tourism & Investment Director, Finance & Admin

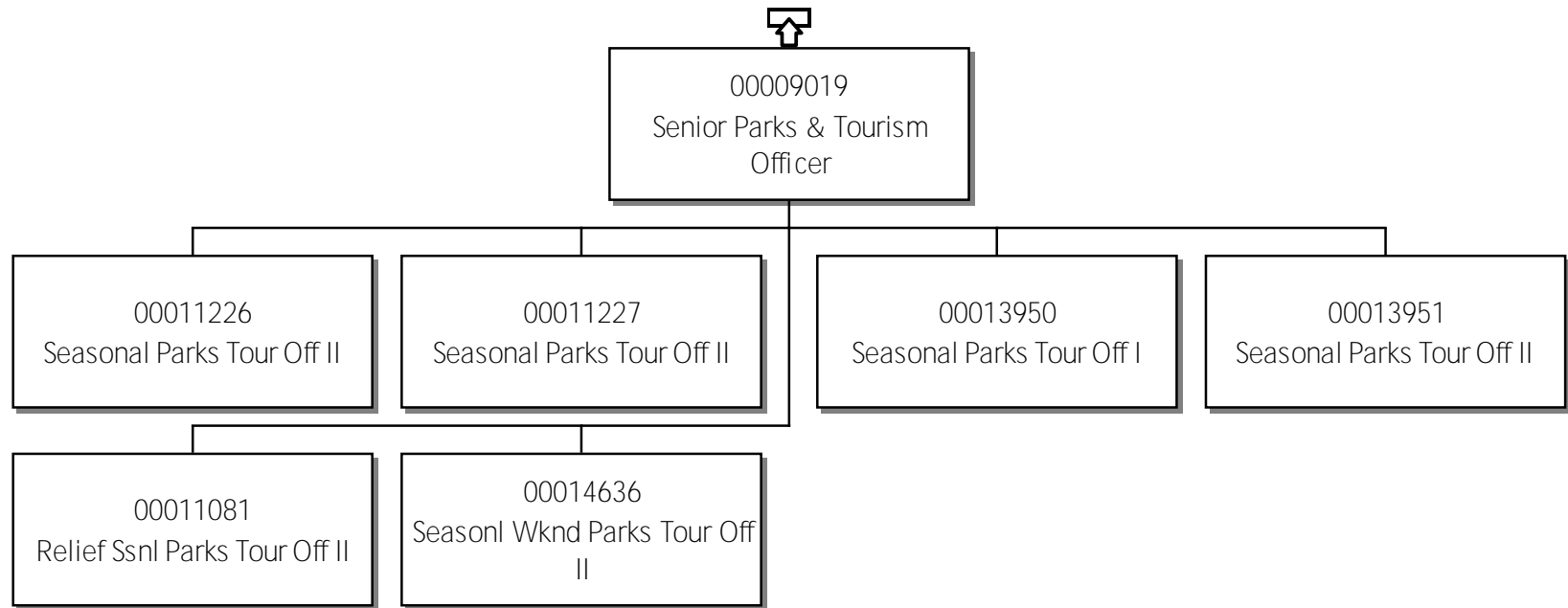




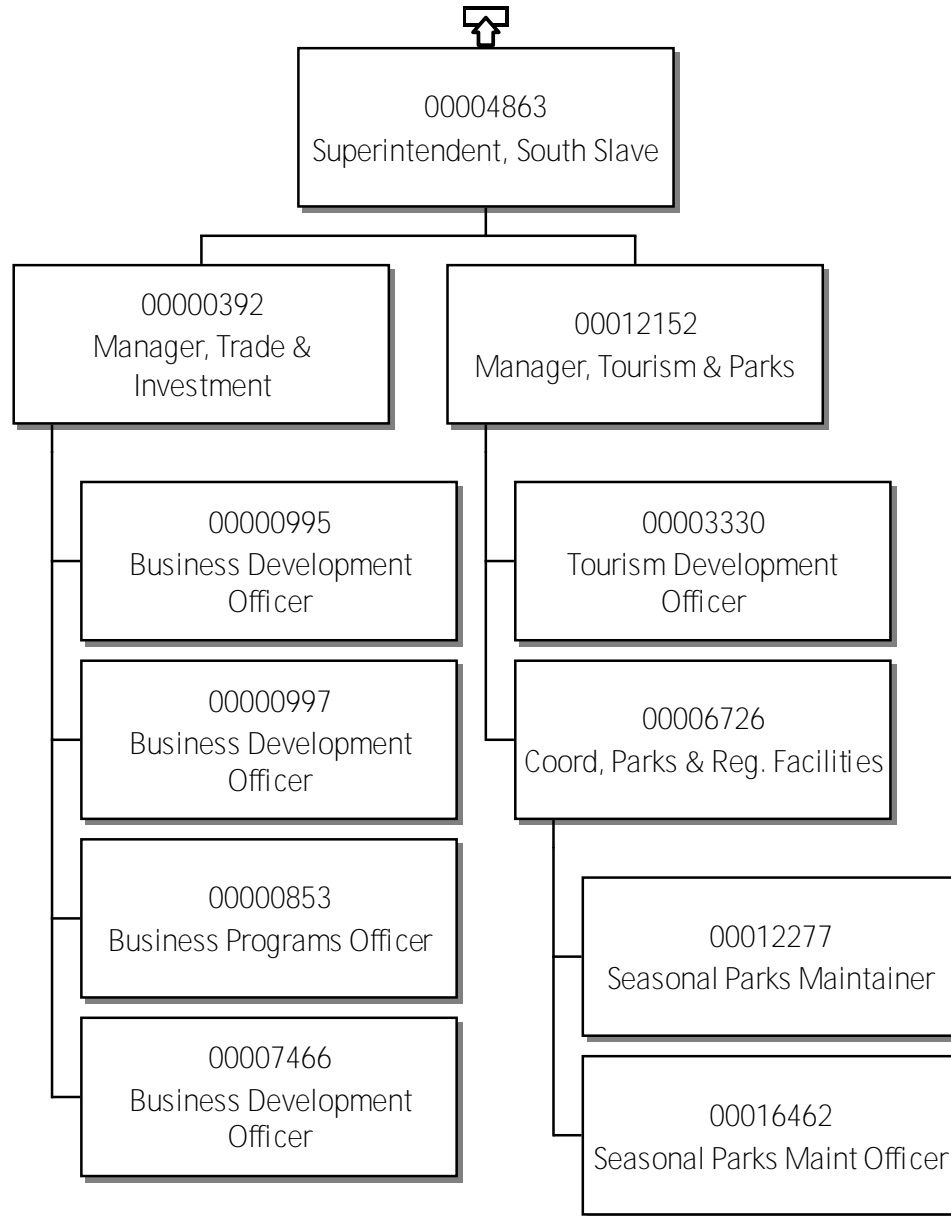
63-Industry, Tourism & Investment
Director, Tourism & Parks

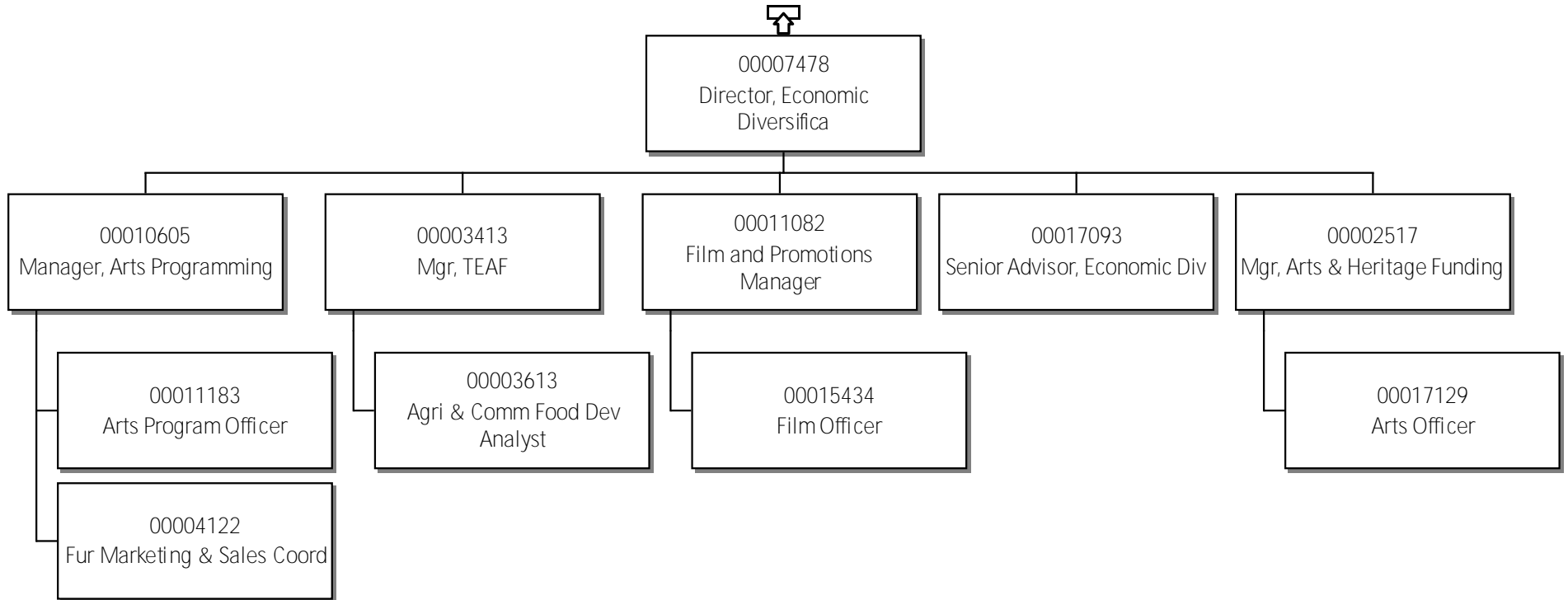


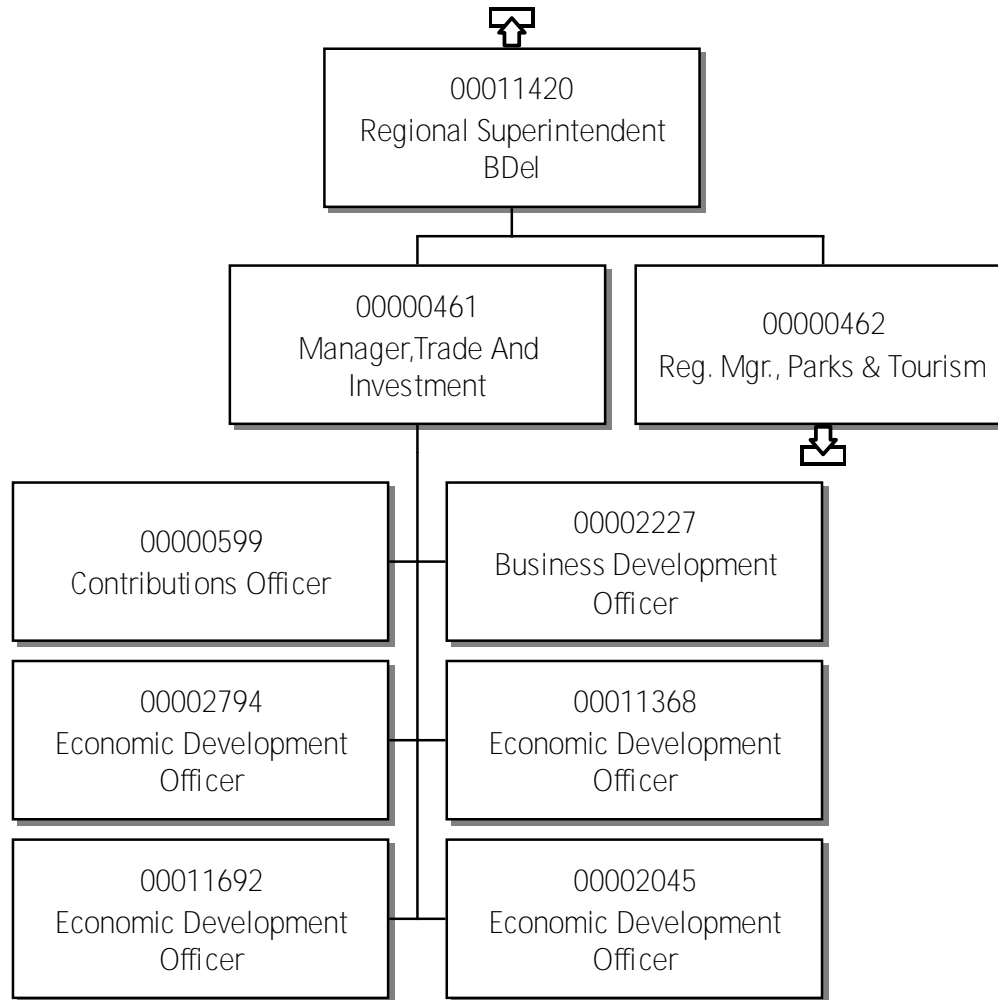


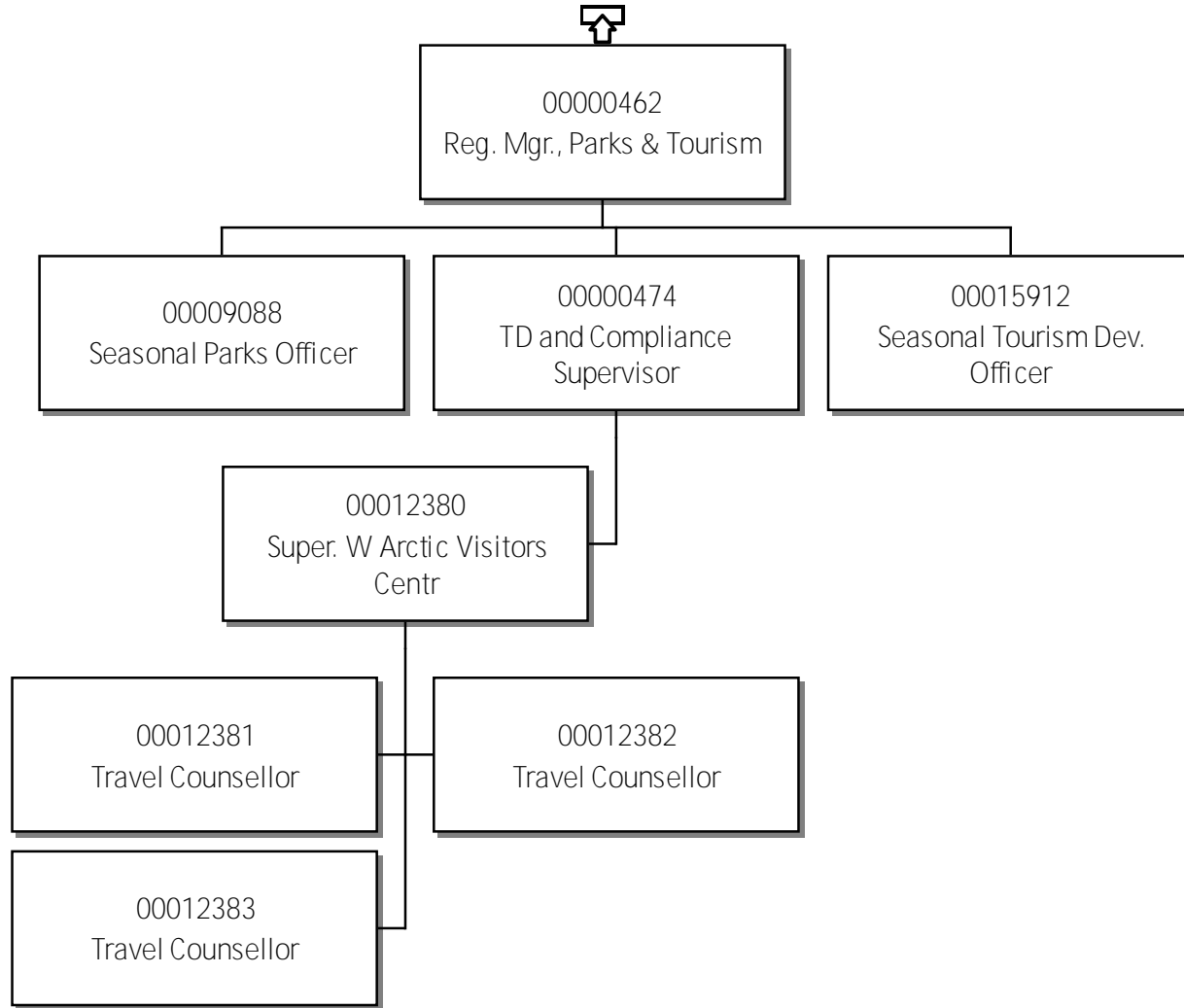


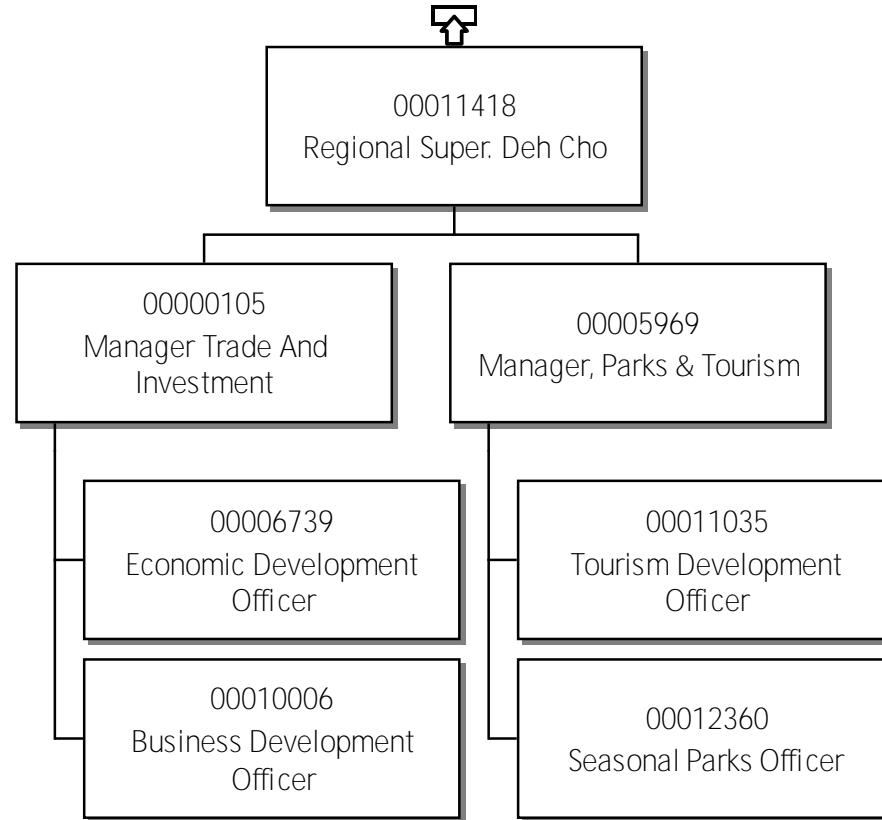
63-Industry, Tourism & Investment
Superintendent, South Slave

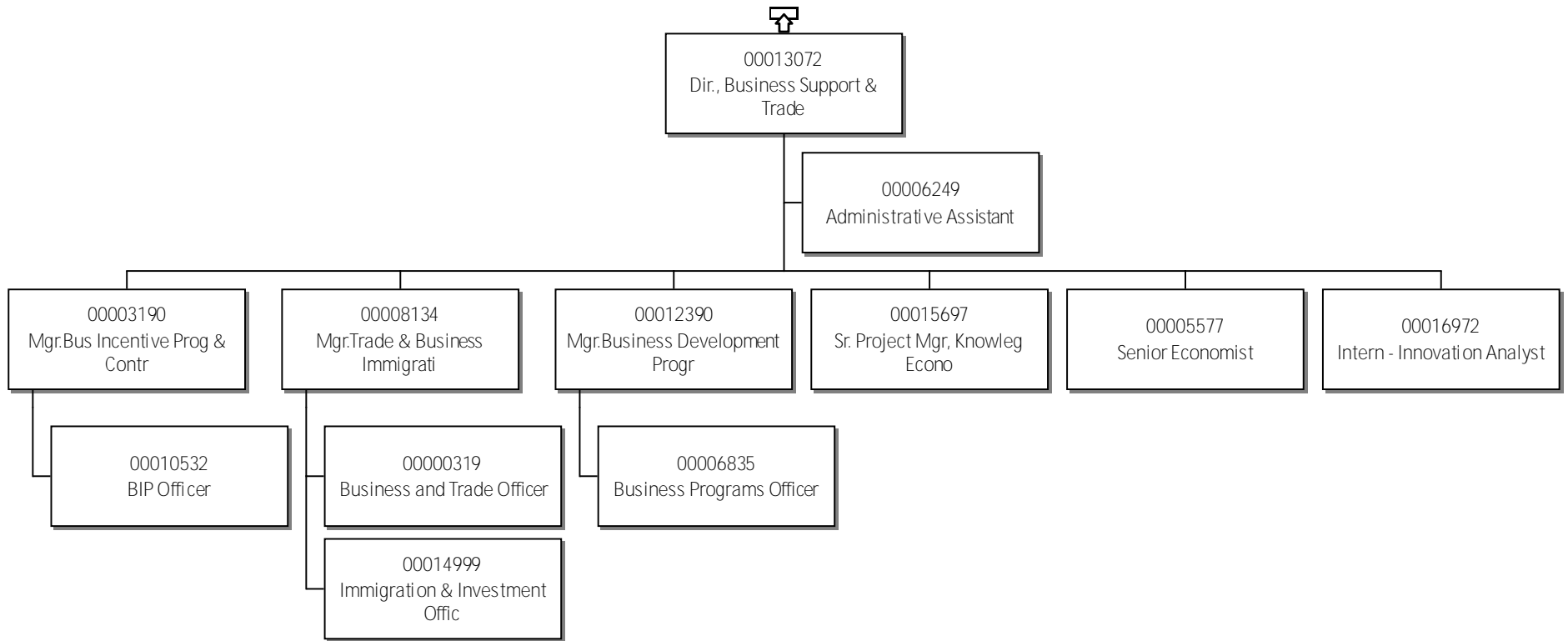


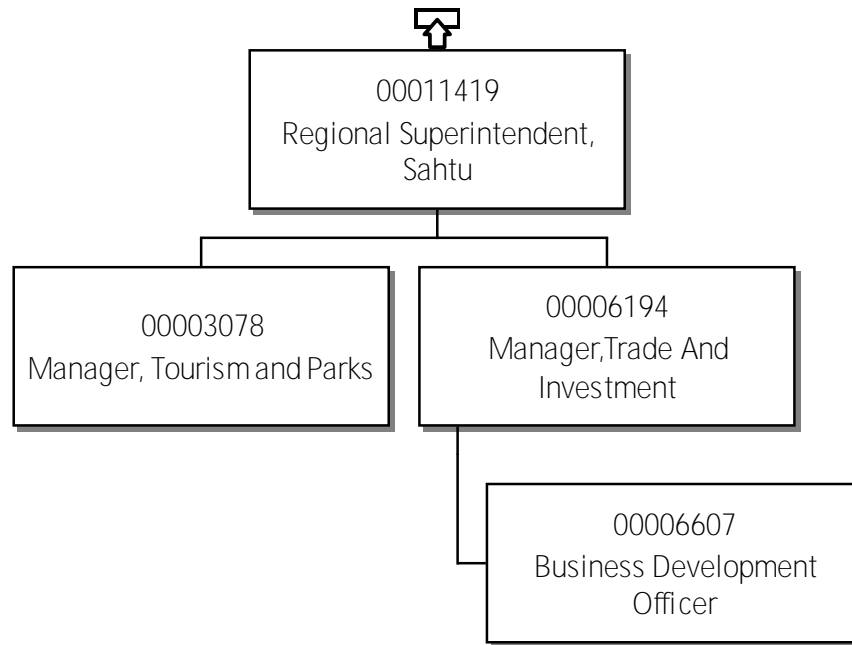


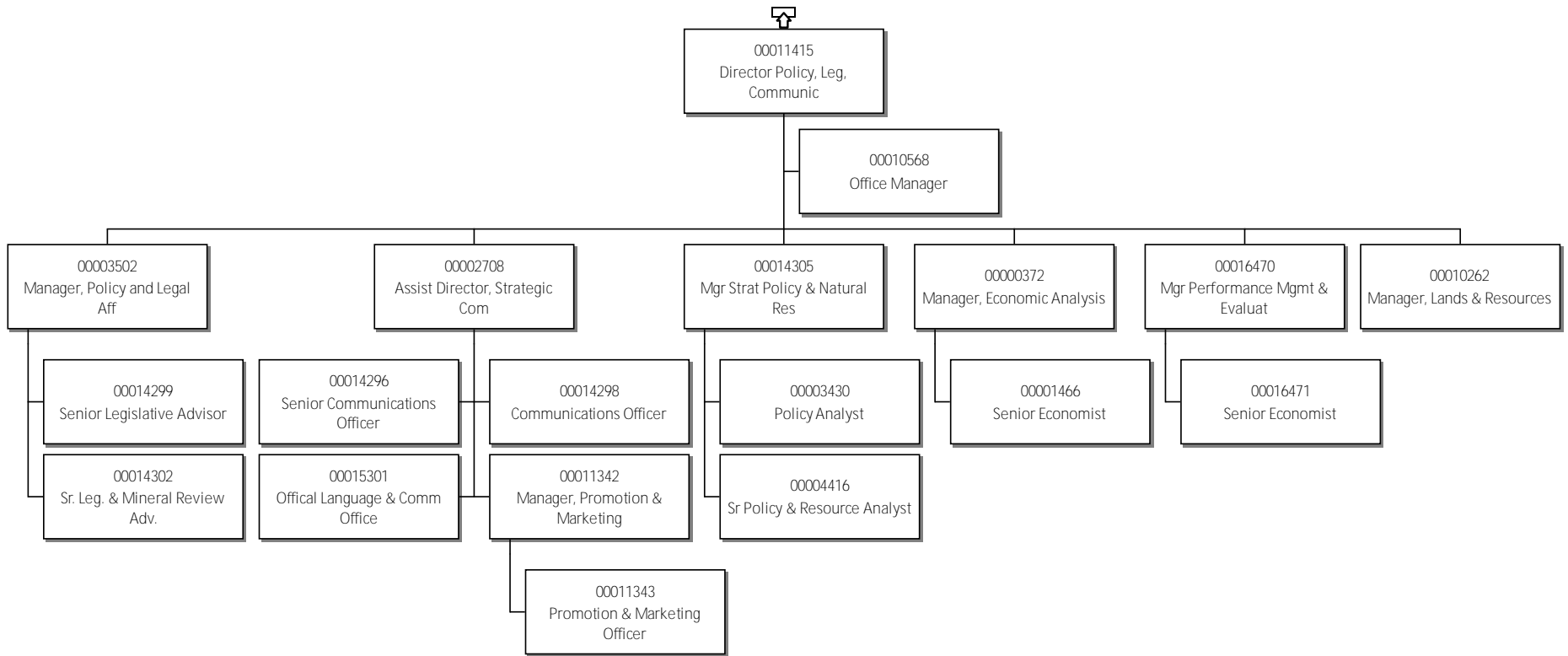


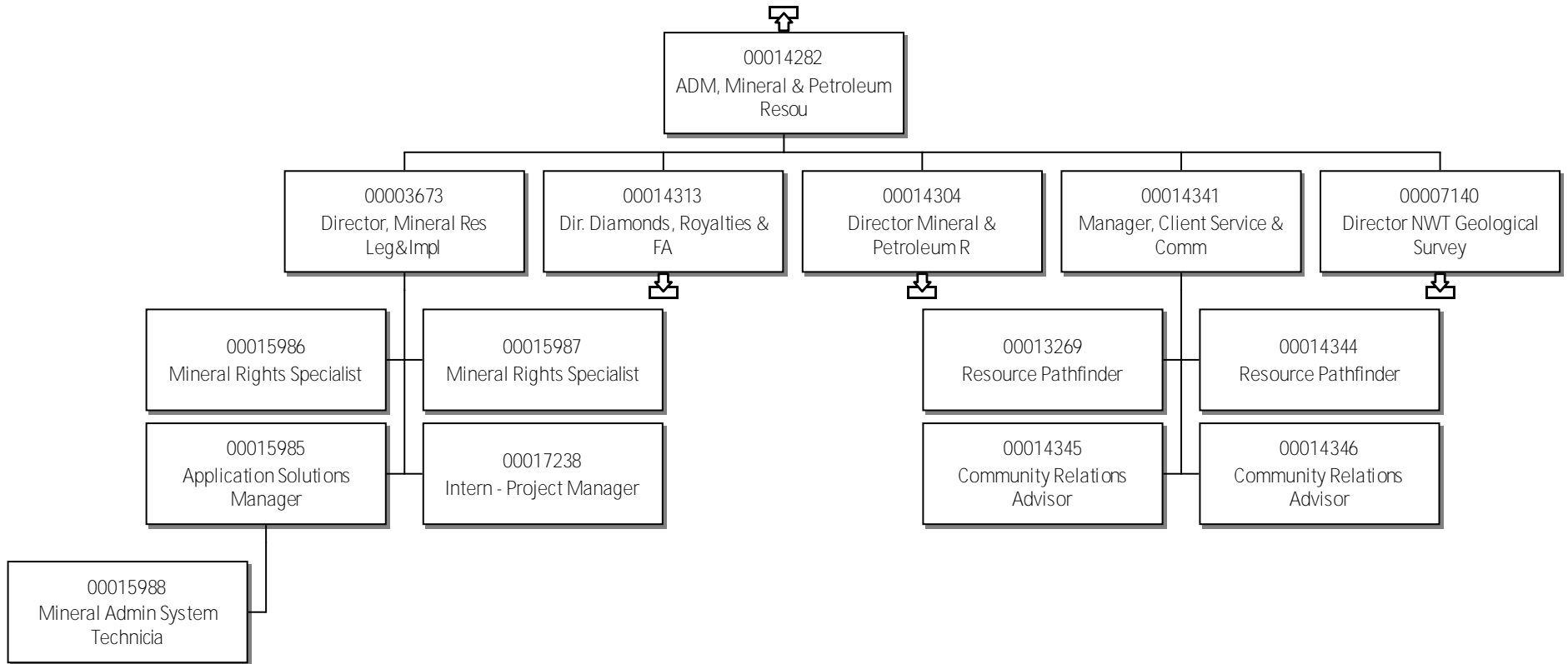


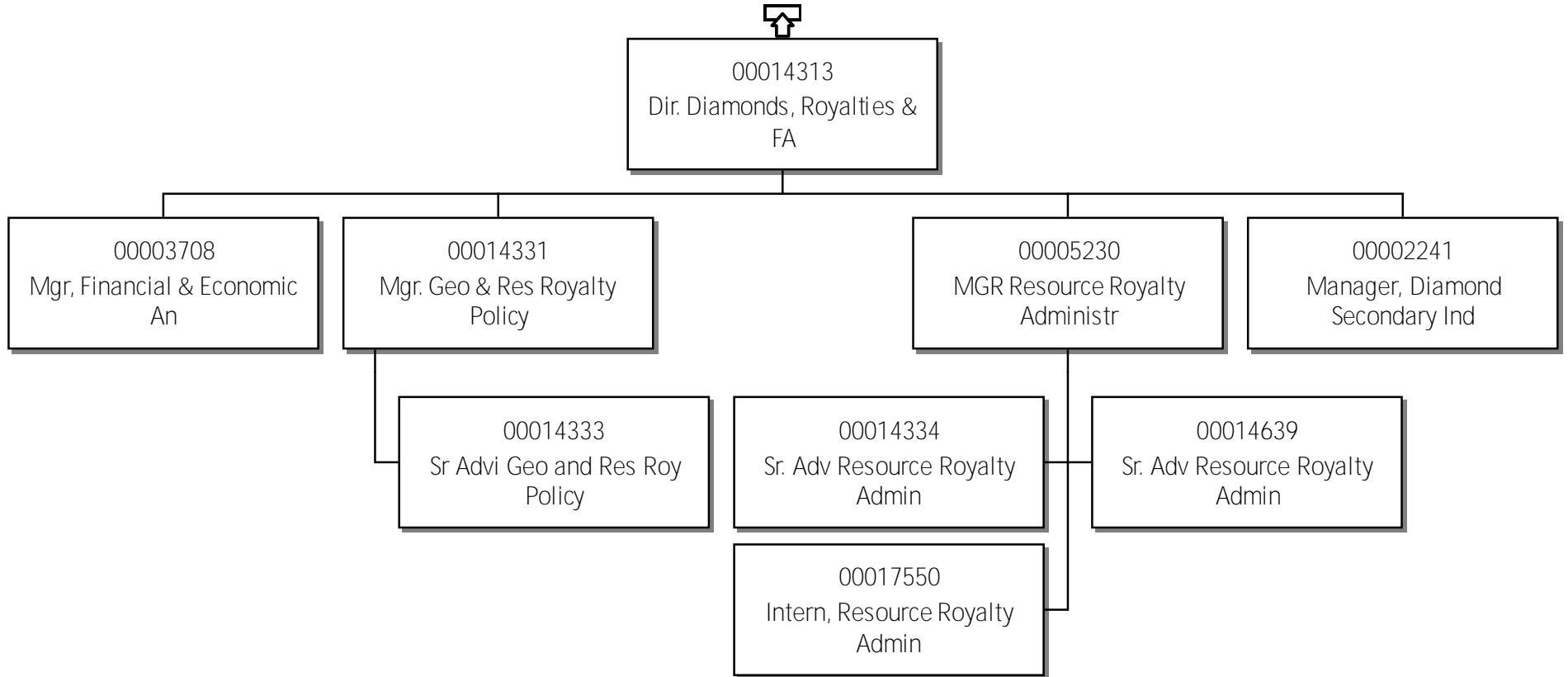












63-Industry, Tourism & Investment Director Mineral & Petroleum R

