



23 - Environment & Climate Change

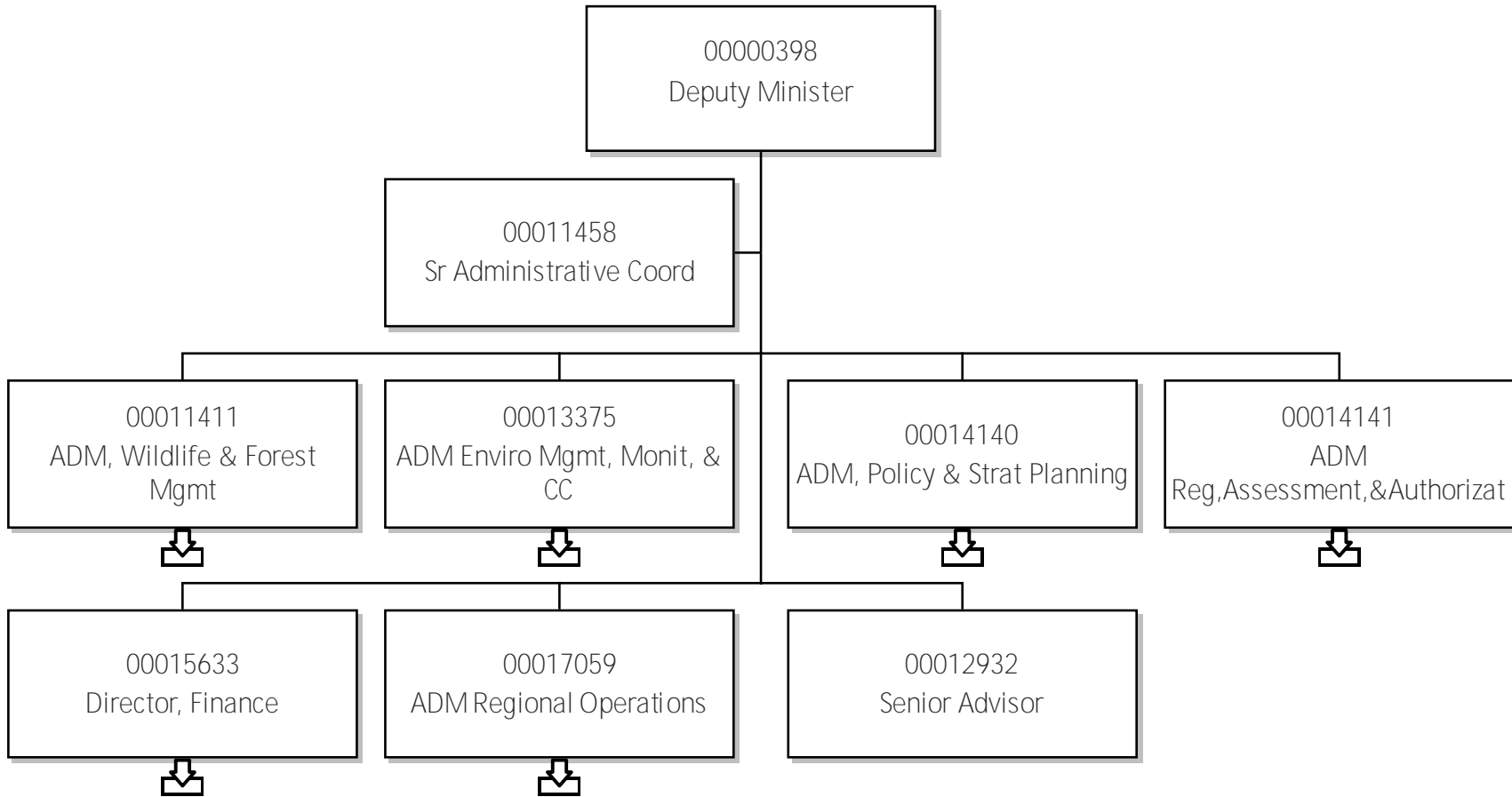
Organizational Chart

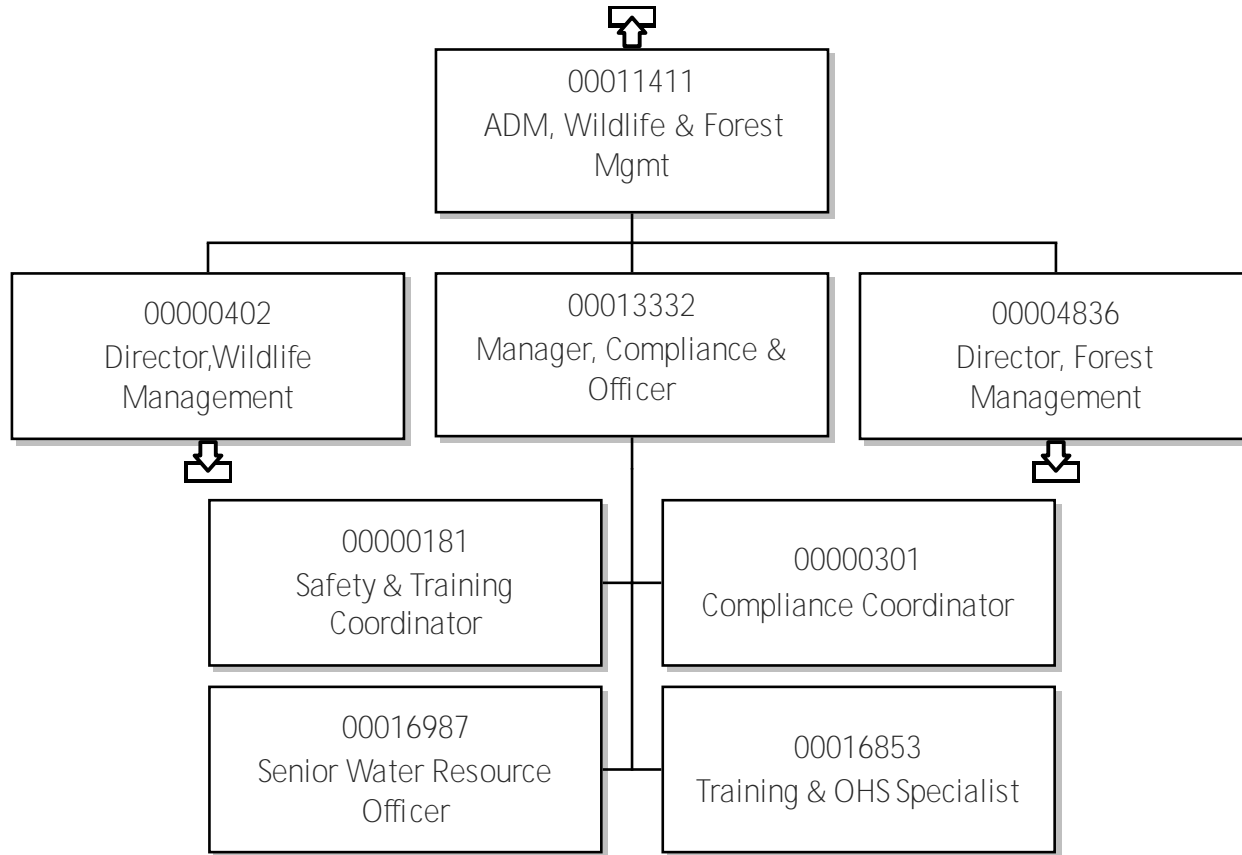
Contents

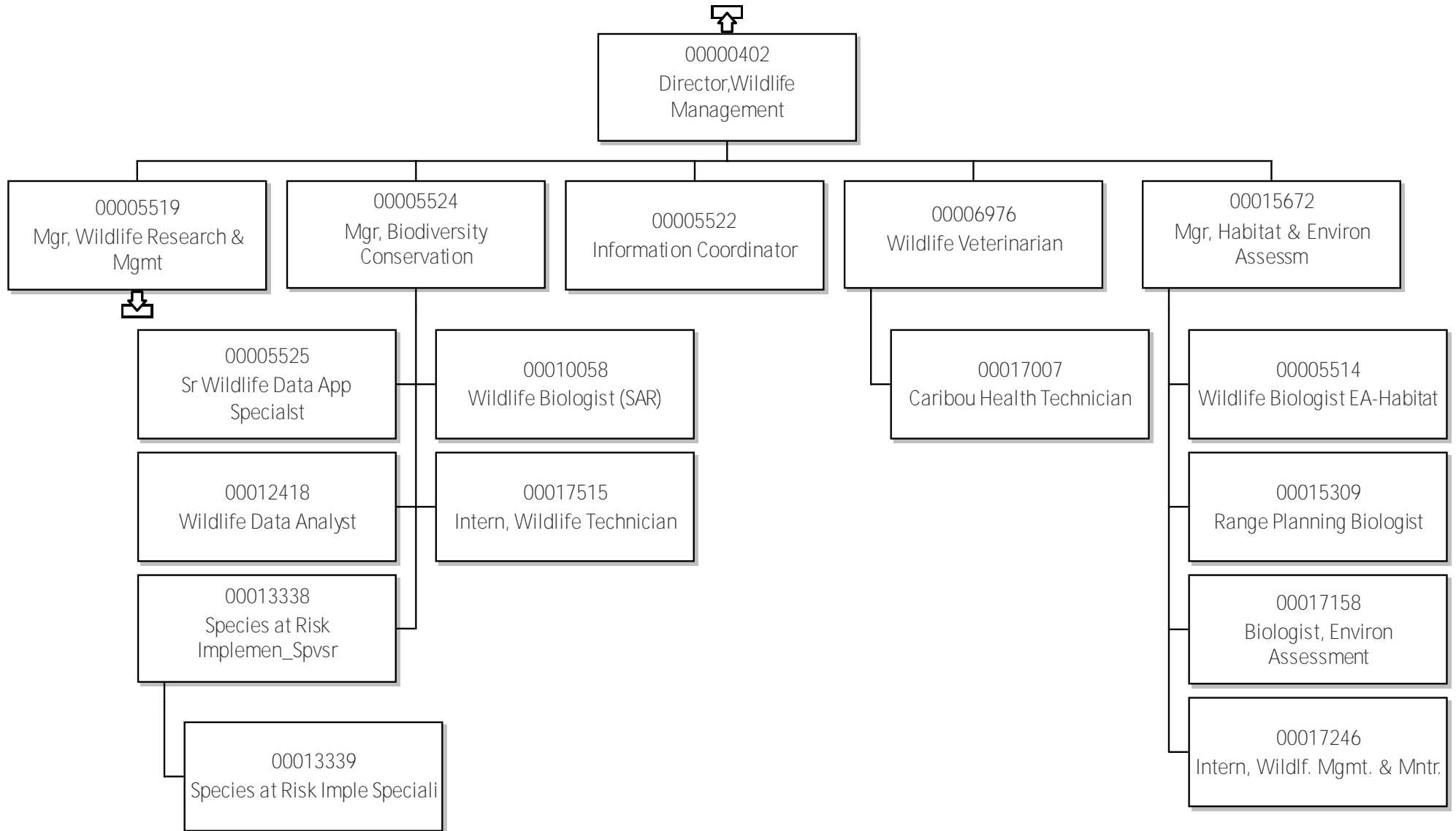
23-ECC - May 13, 2026 - Web.....	1
Contents.....	2
Deputy Minister.....	4
ADM, Wildlife & Forest Mgmt.....	5
Director, Wildlife Management.....	6
Mgr, Wildlife Research & Mgmt.....	7
Director, Forest Management.....	8
Manager, Wildfire Operations.....	9
Manager, Aviation Services.....	10
Airtanker Base Manager.....	11
Manager, Forest Resources.....	12
ADM Enviro Mgmt, Monit, & CC.....	13
Director, Env Protection & WM.....	14
Manager, Waste Reduction & Mgt.....	15
Manager, Climate Change.....	16
Mgr, NWT CIMP.....	17
Director Water Monitoring & St.....	18
Manager, Taiga Environment Lab.....	19
ADM, Policy & Strat Planning.....	20
Director Policy Leg Eval & Com.....	21
Director Conservation & Sustai.....	22
ADM Reg, Assessment, & Authorizat.....	23
Director, Land Mgmt & Administ.....	24
Director, Regulatory & Permitt.....	25
Director, Finance.....	26

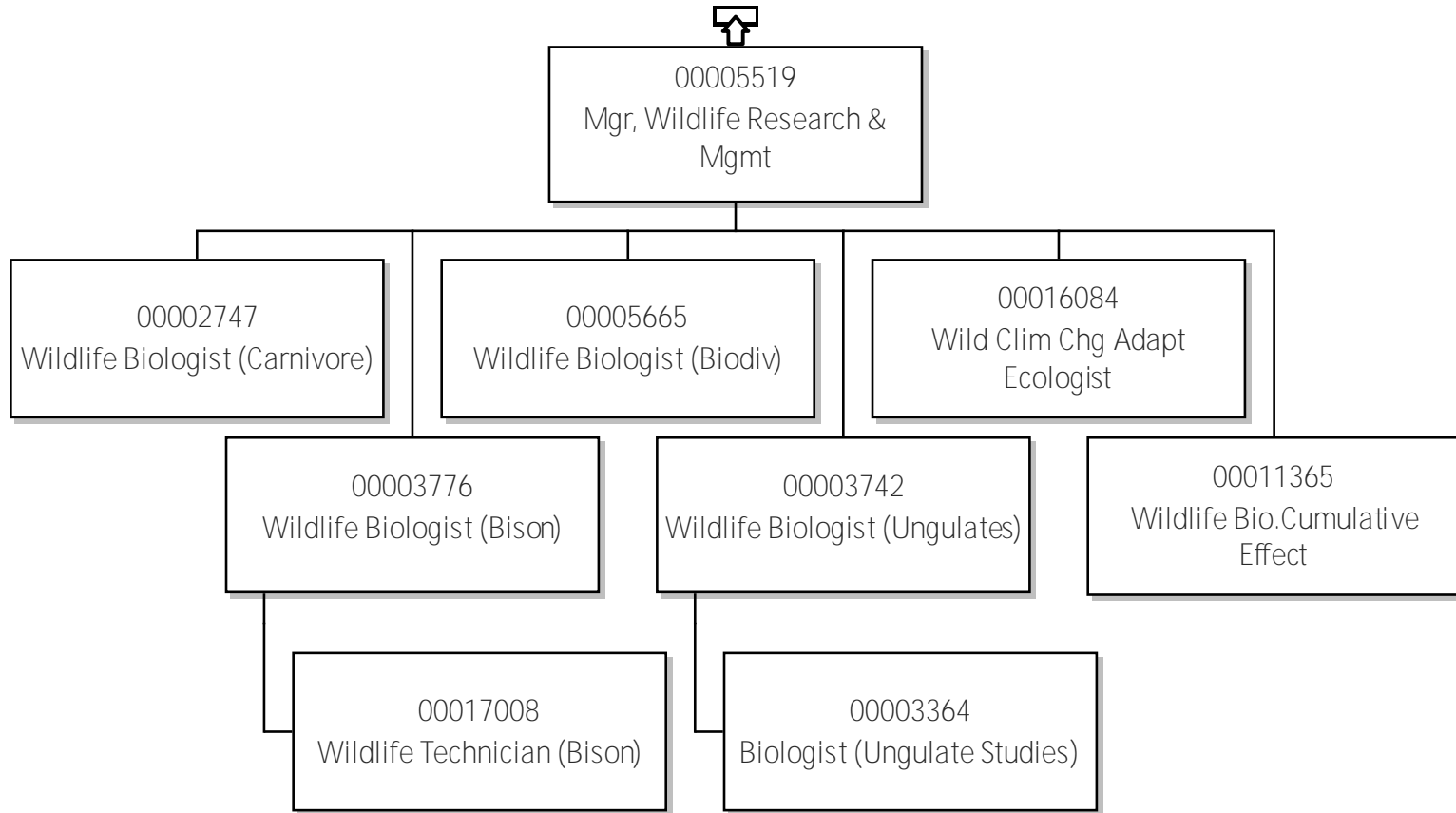
Contents Continued

ADM Regional Operations.....	27
Superintendent L&W, South Sla.....	28
Regional Superintendent, Sahtu.....	29
Manager, Forestry Operations.....	30
Manager Wildlife & Environment.....	31
Superintendent W&FM, BDel.....	32
Forest Officer.....	33
Manager Wildlife & Environment.....	34
Superintendent W&FM, South Sla.....	35
Manager Wildlife & Environment.....	36
Crew Coordinator.....	37
Manager, Forestry Operations.....	38
Superintendent, L&W, BeauDel.....	39
Regional Superintendent DehCho.....	40
Manager, Forestry Operations.....	41
Forest Officer.....	42
Manager Wildlife & Environment.....	43
Superintendent W&FM, North Sla.....	44
Manager Wildlife & Environment.....	45
Manager, Forestry Operations.....	46
Superintendent L&W, North Sla.....	47

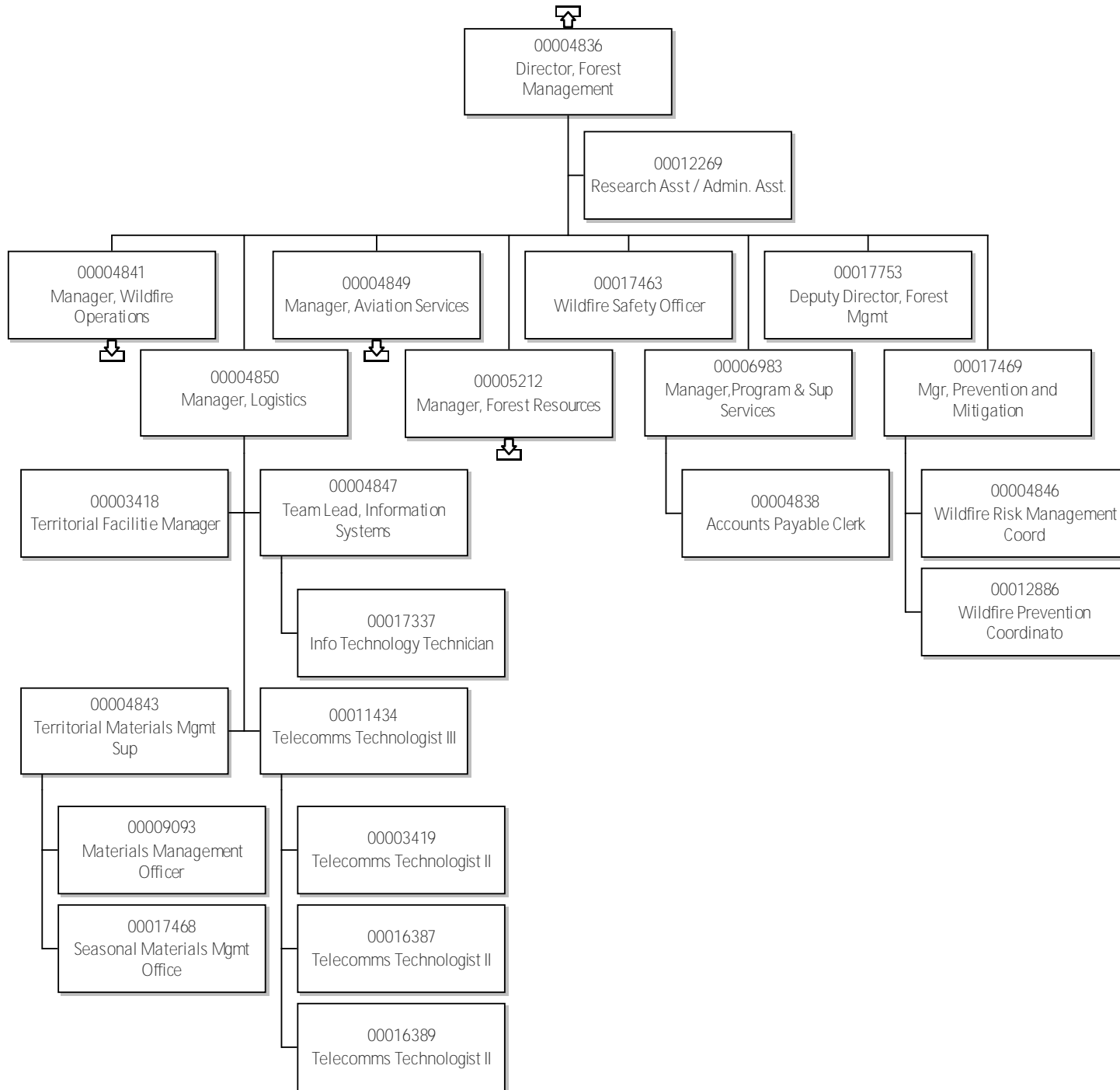


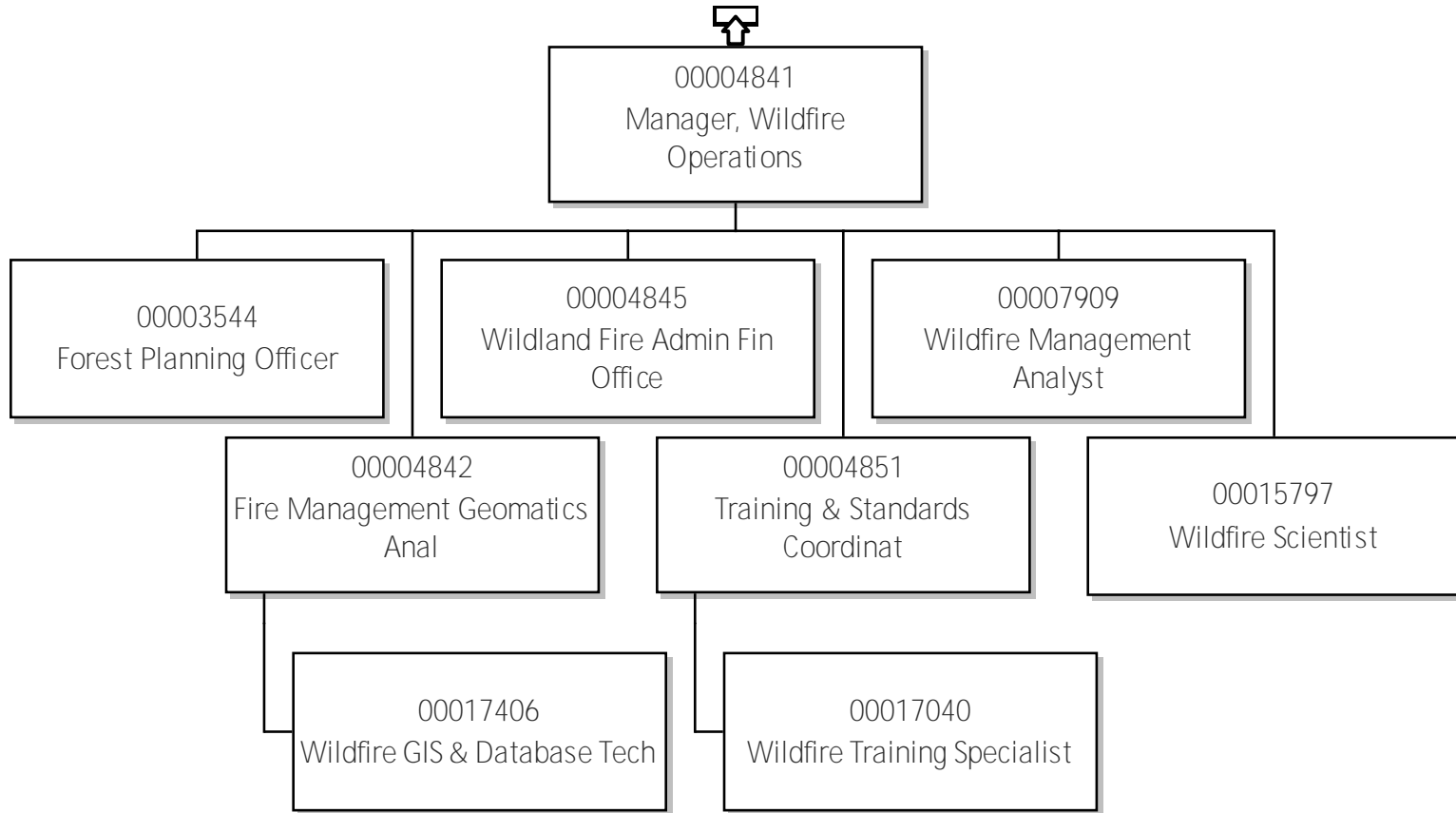


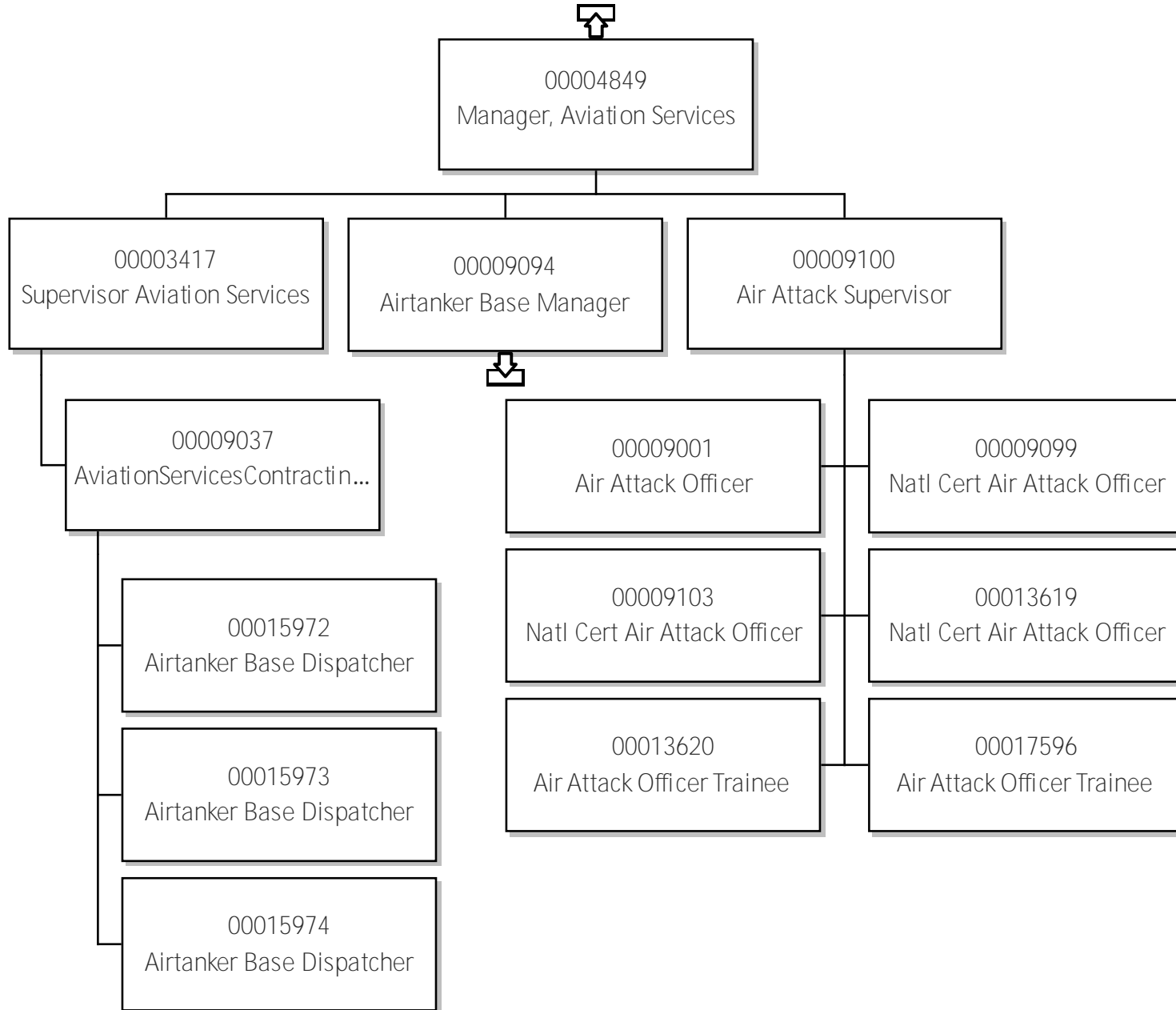


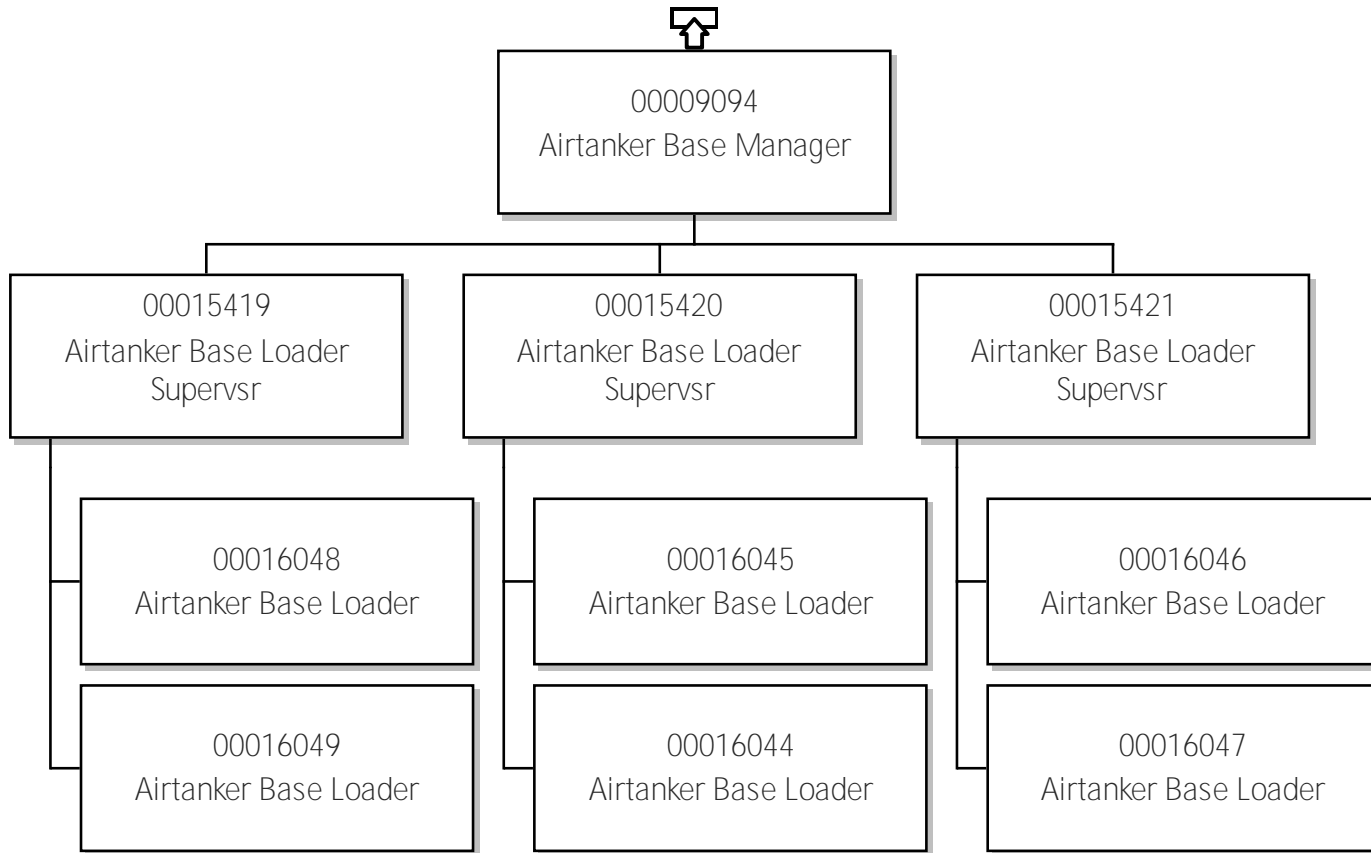


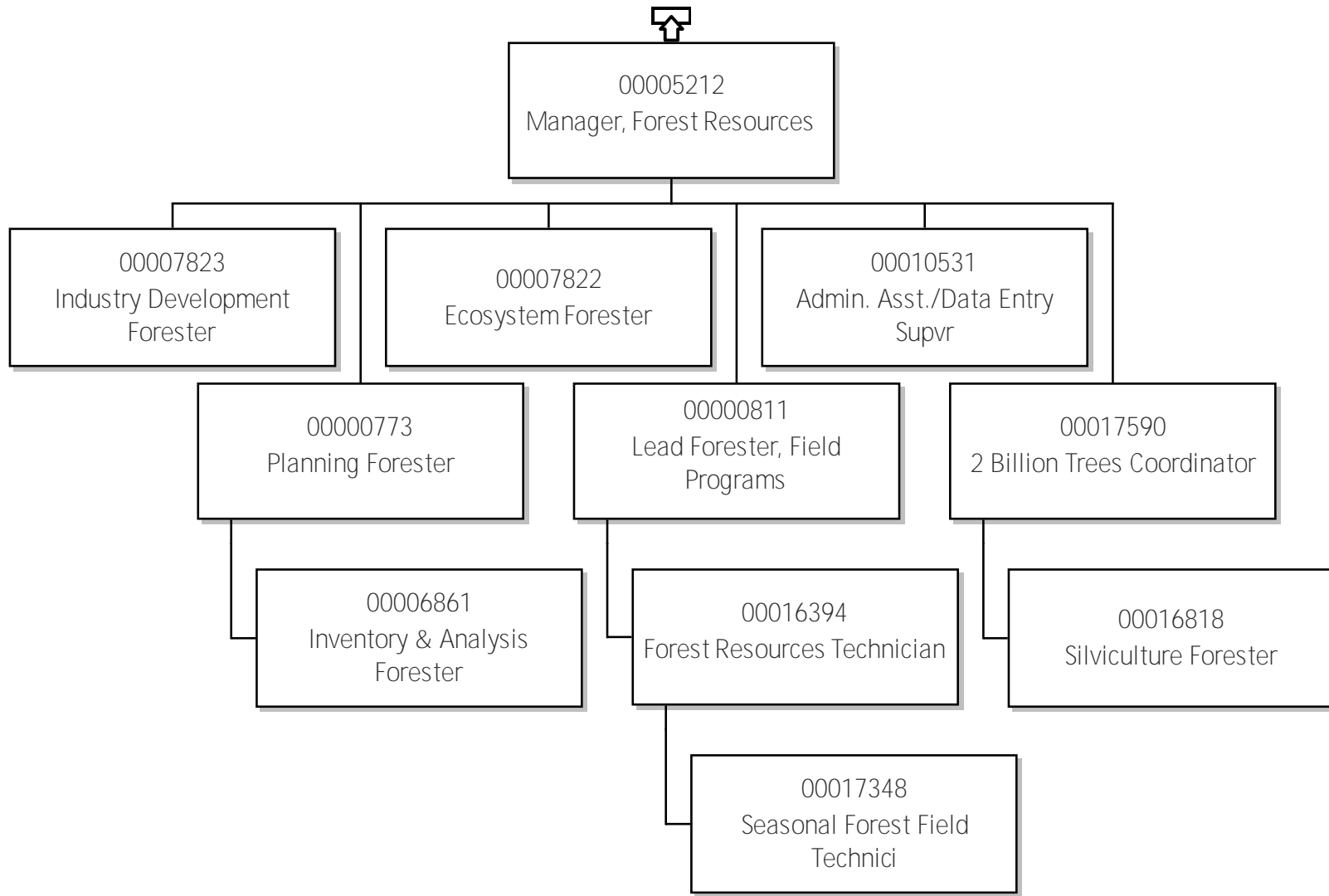
23-Environment & Climate Change Director, Forest Management

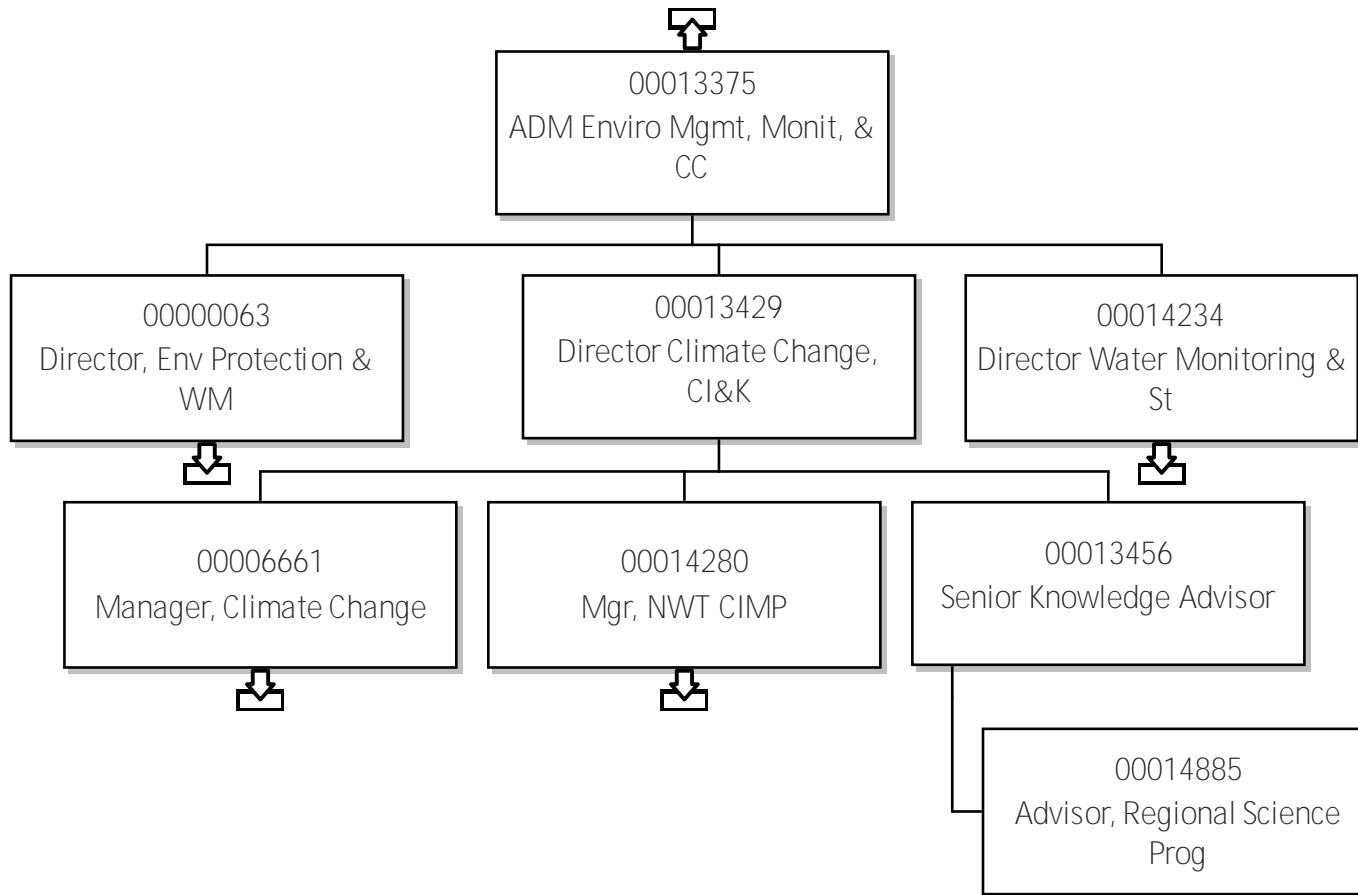




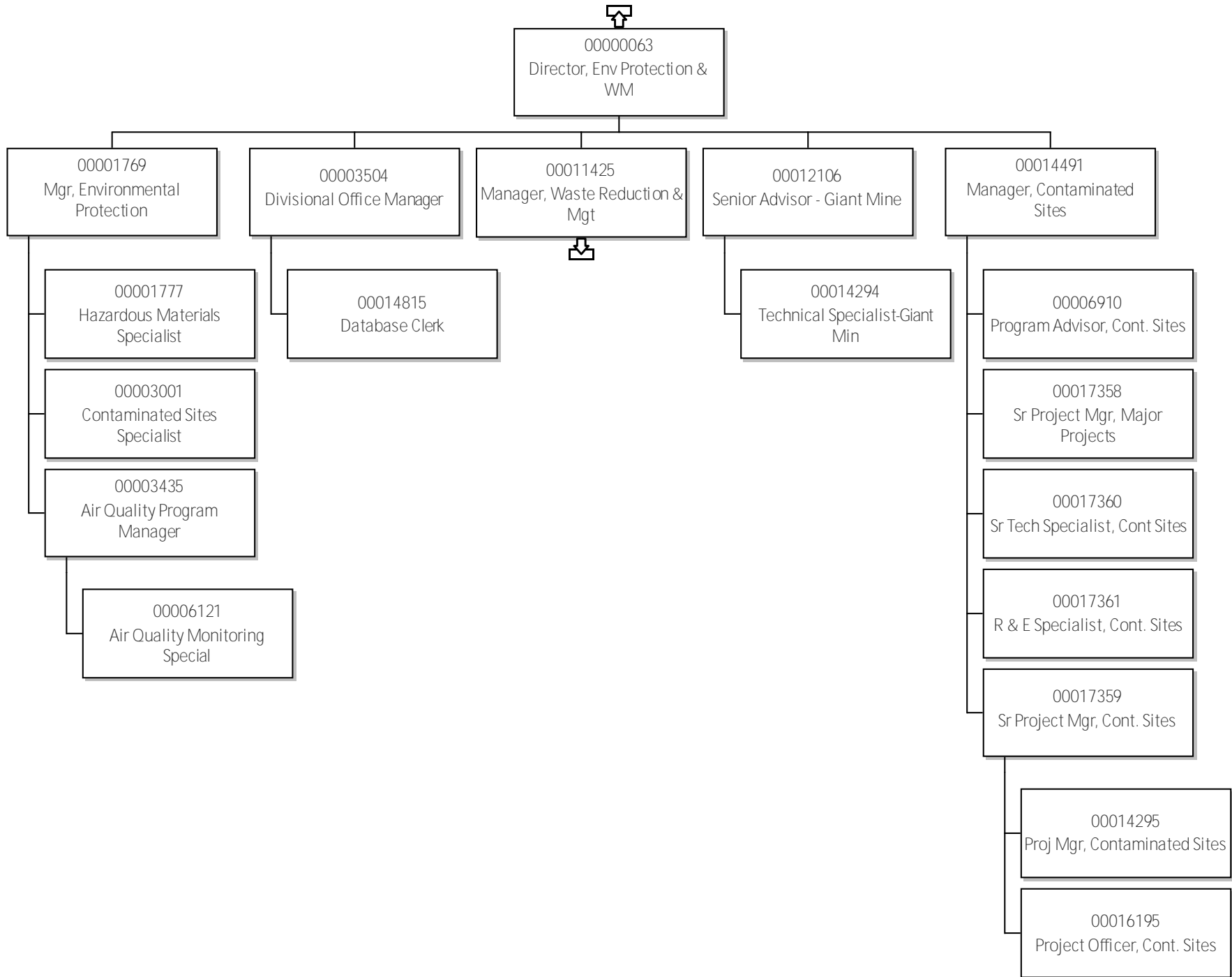


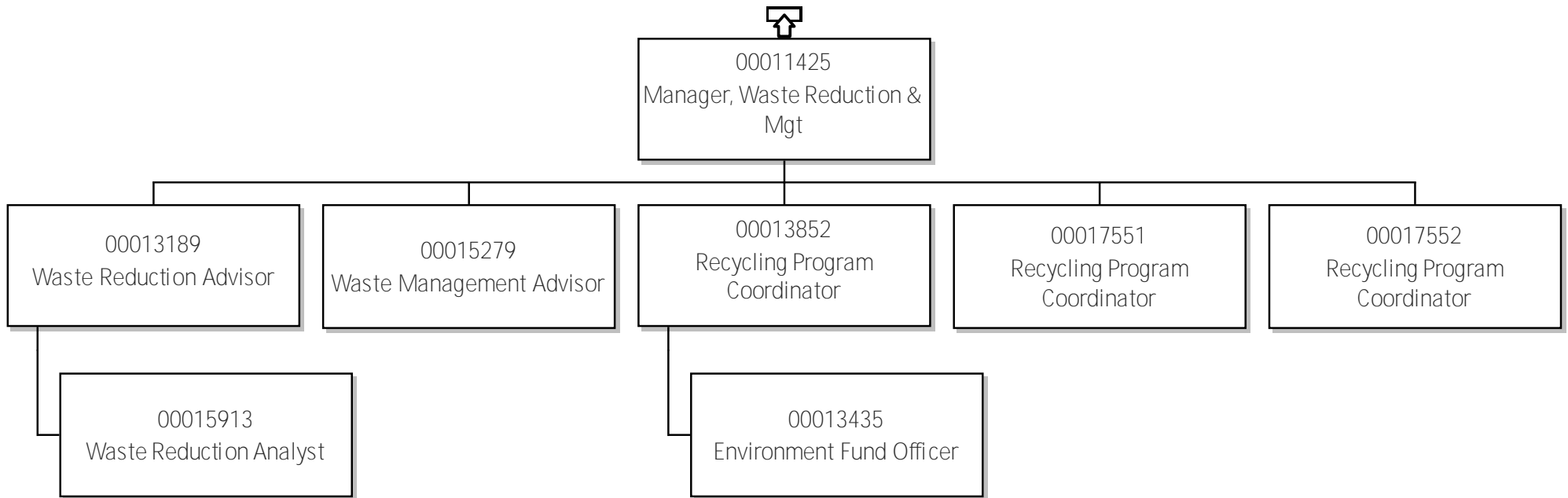


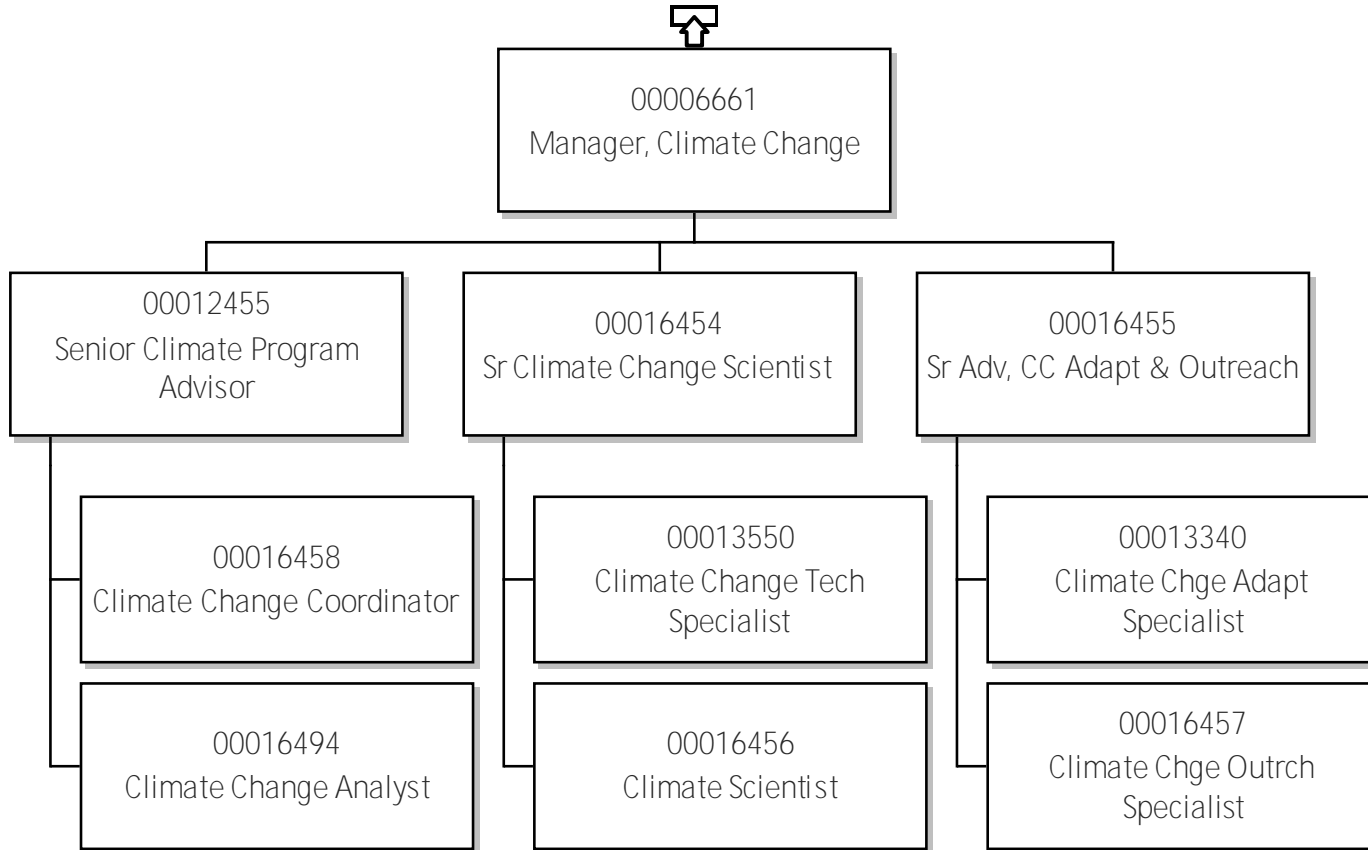


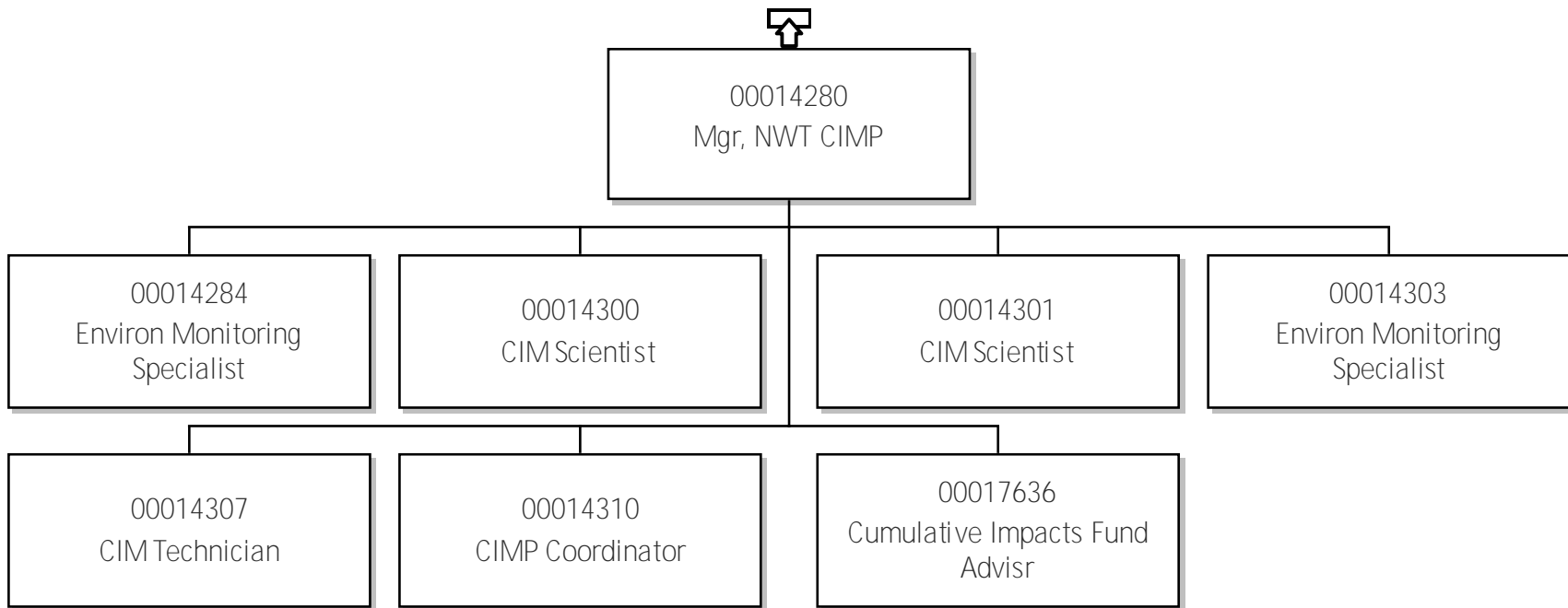


23-Environment & Climate Change
Director, Env Protection & WM

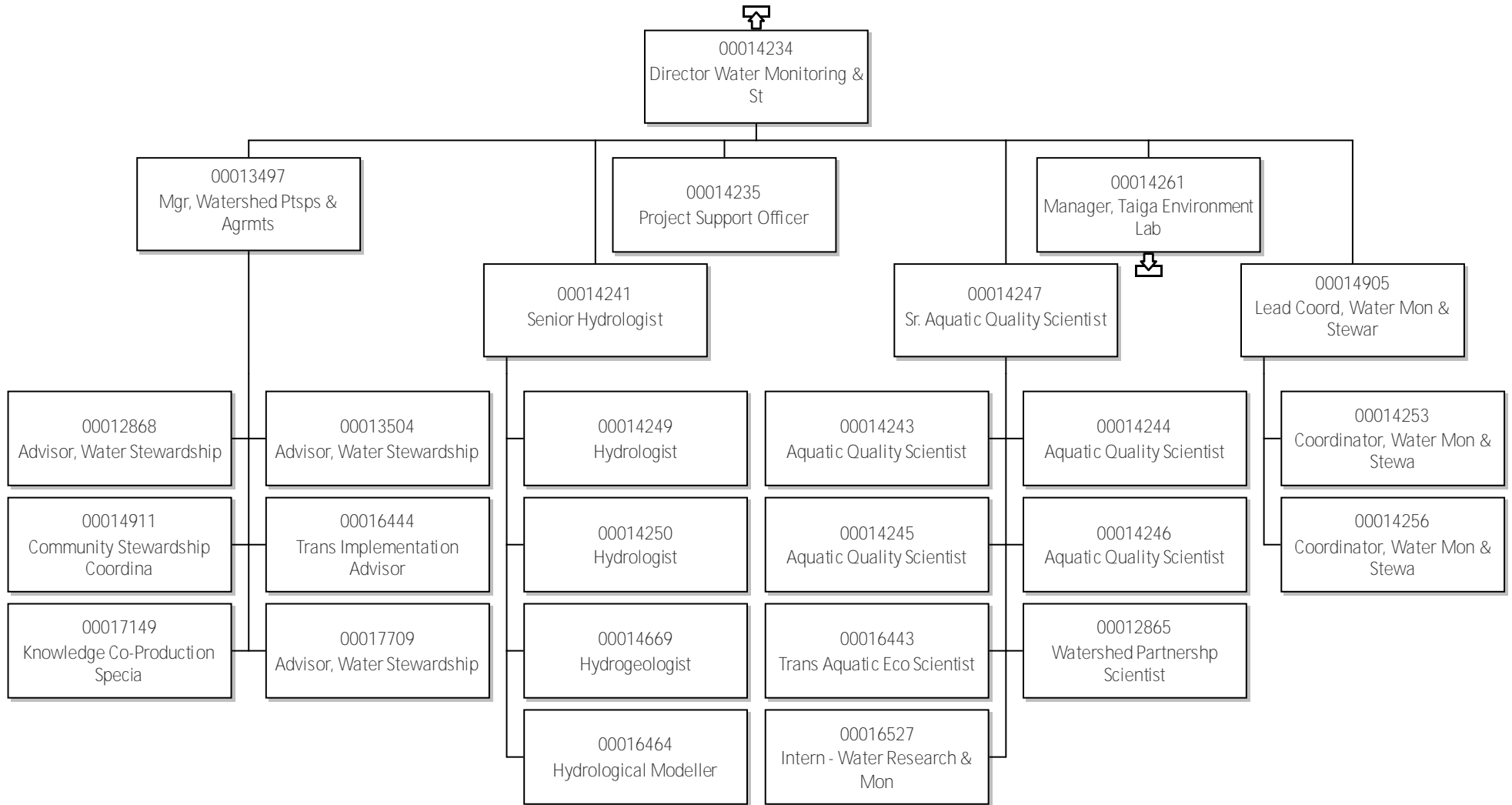


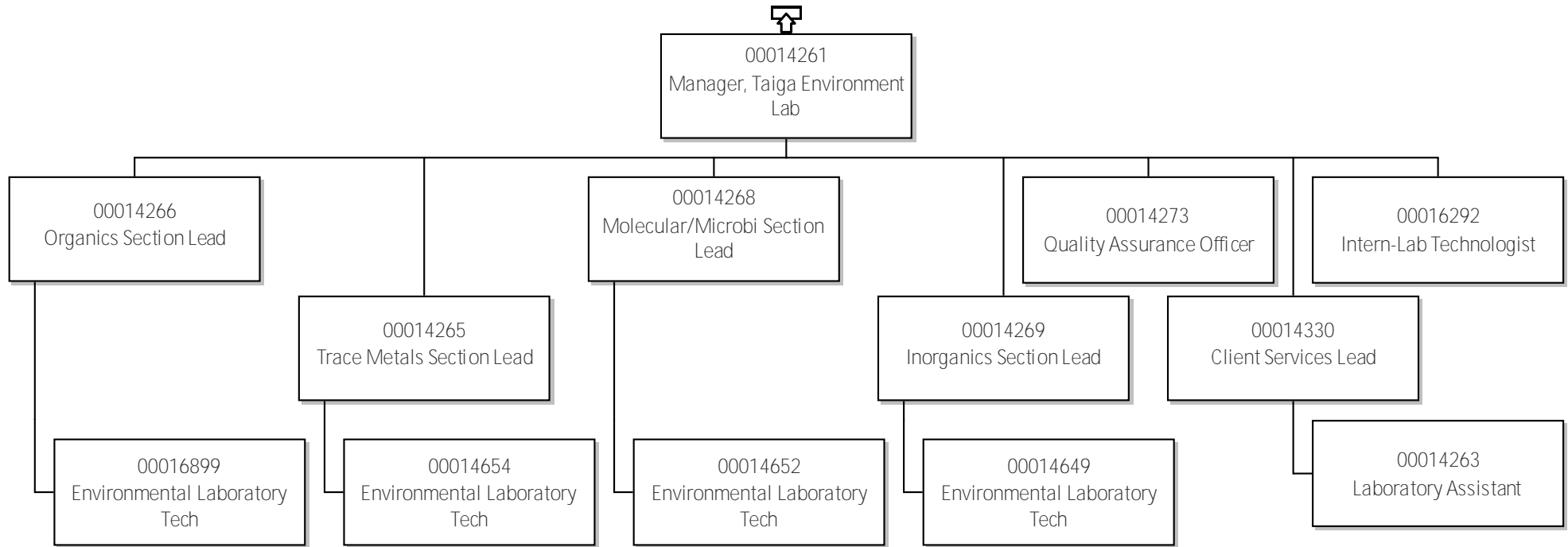


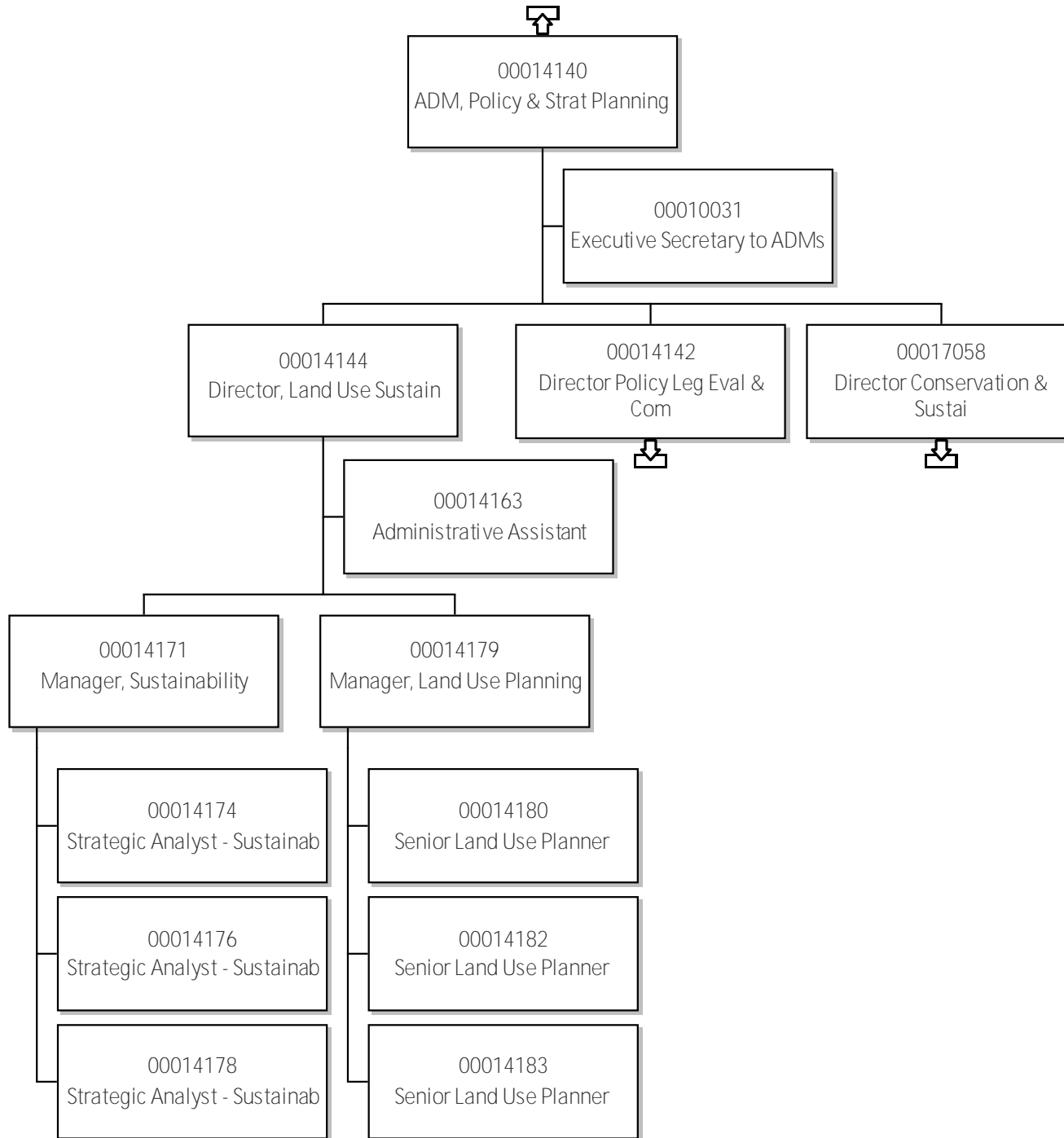




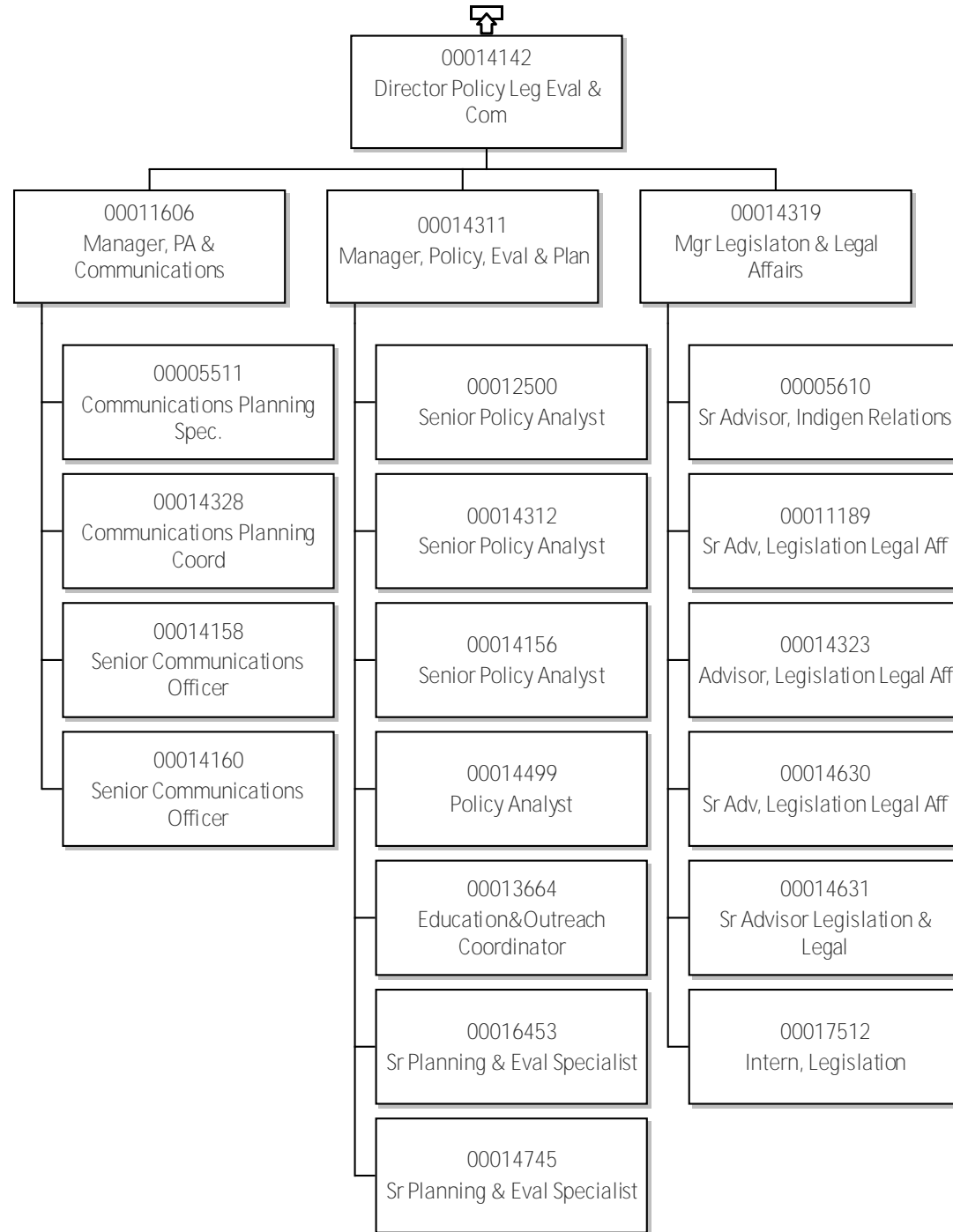
23-Environment & Climate Change Director Water Monitoring & St

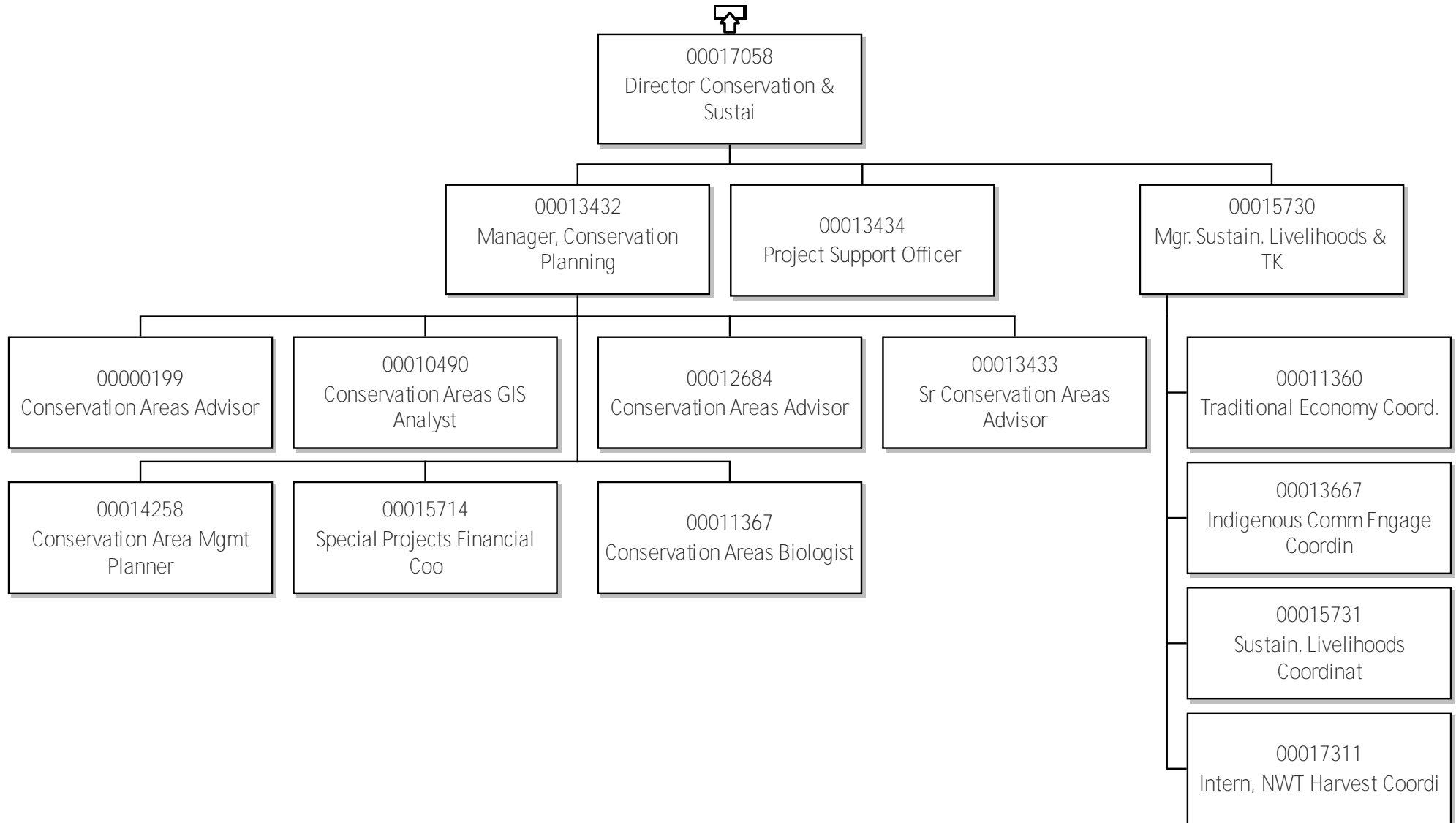


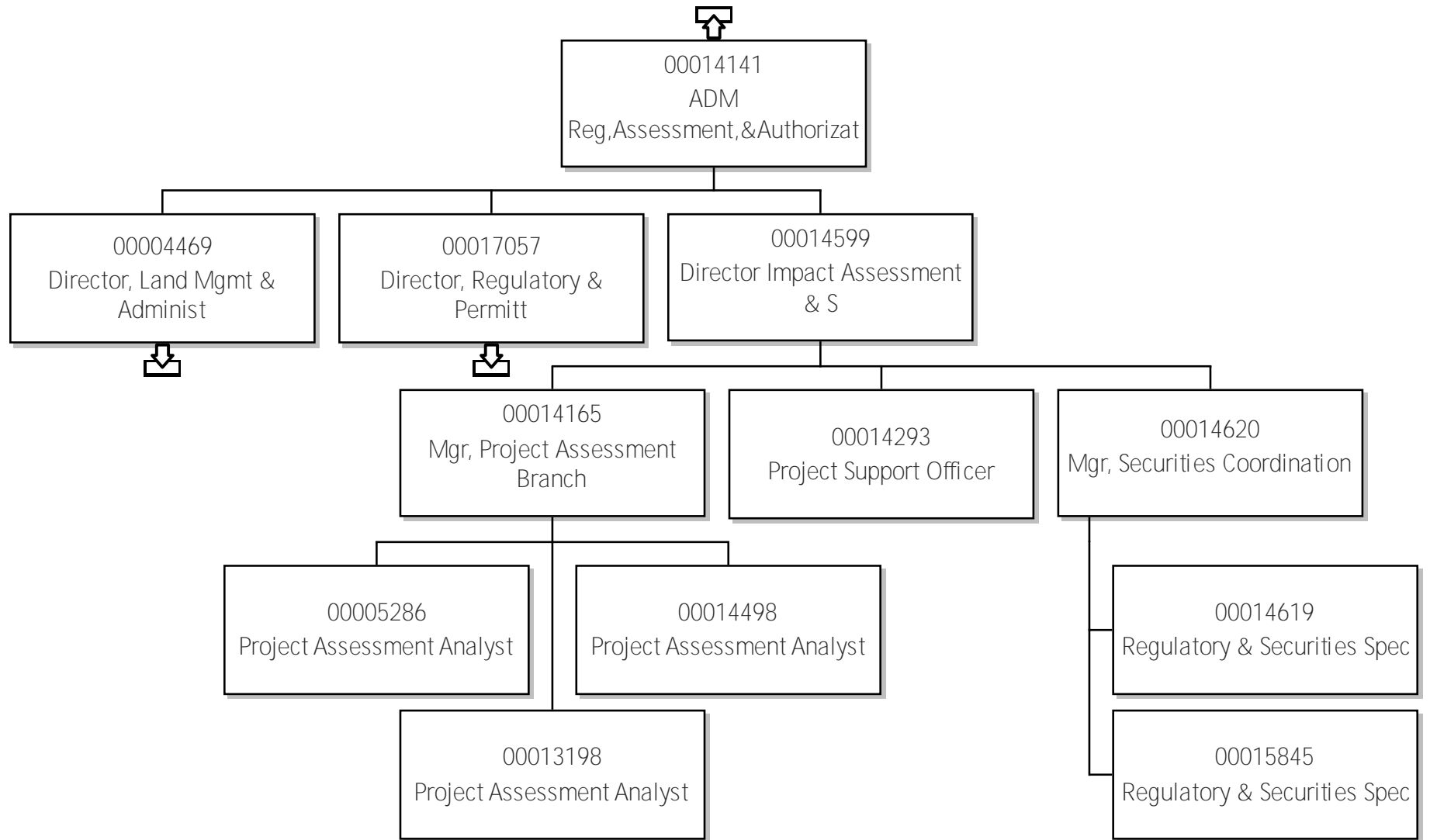




23-Environment & Climate Change Director Policy Leg Eval & Com







23-Environment & Climate Change Director, Land Mgmt & Administ

