



23 - Environment & Climate Change

Organizational Chart

Contents

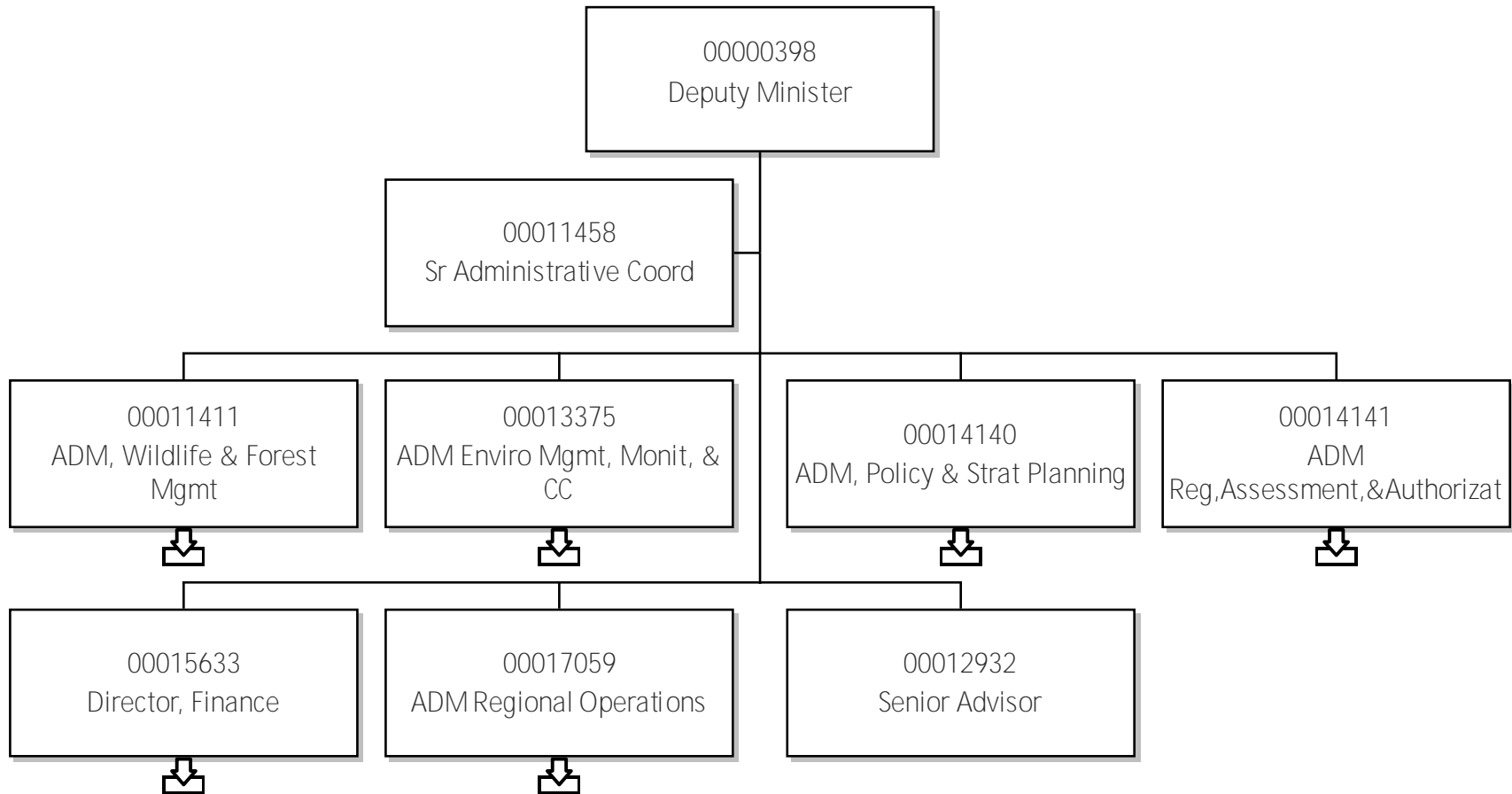
23-ECC - Jan. 9, 2026 - Web.....	1
Contents.....	2
Deputy Minister.....	5
ADM, Wildlife & Forest Mgmt.....	6
Director, Wildlife Management.....	7
Mgr, Wildlife Research & Mgmt.....	8
Director, Forest Management.....	9
Manager, Wildfire Operations.....	10
Manager, Aviation Services.....	11
Airtanker Base Manager.....	12
Manager, Forest Resources.....	13
ADM Enviro Mgmt, Monit, & CC.....	14
Director, Env Protection & WM.....	15
Manager, Waste Reduction & Mgt.....	16
Director Climate Change, CI&K.....	17
Manager, Climate Change.....	18
Mgr, NWT CIMP.....	19
Director Water Monitoring & St.....	20
Manager, Taiga Environment Lab.....	21
ADM, Policy & Strat Planning.....	22
Director, Land Use Sustain.....	23
Director Policy Leg Eval & Com.....	24
Director Conservation & Sustai.....	25

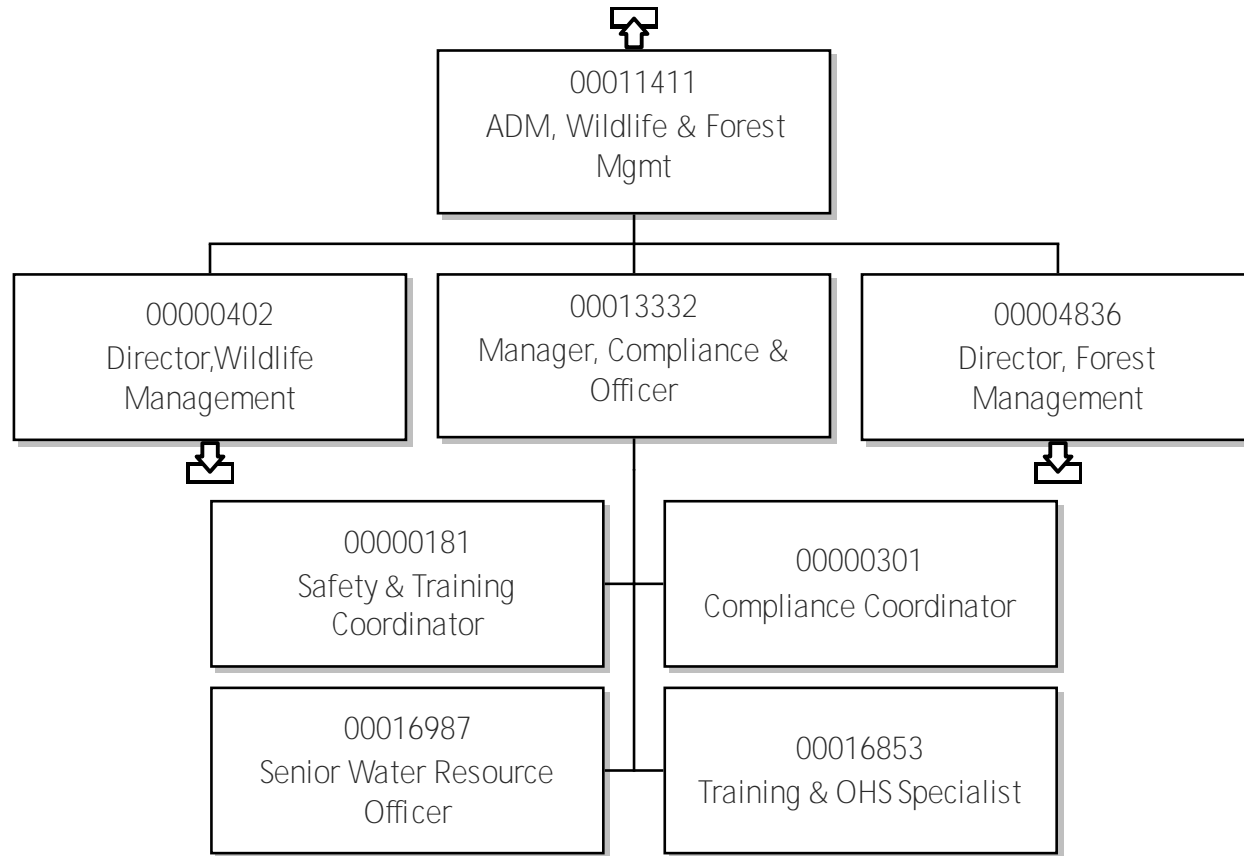
Contents Continued

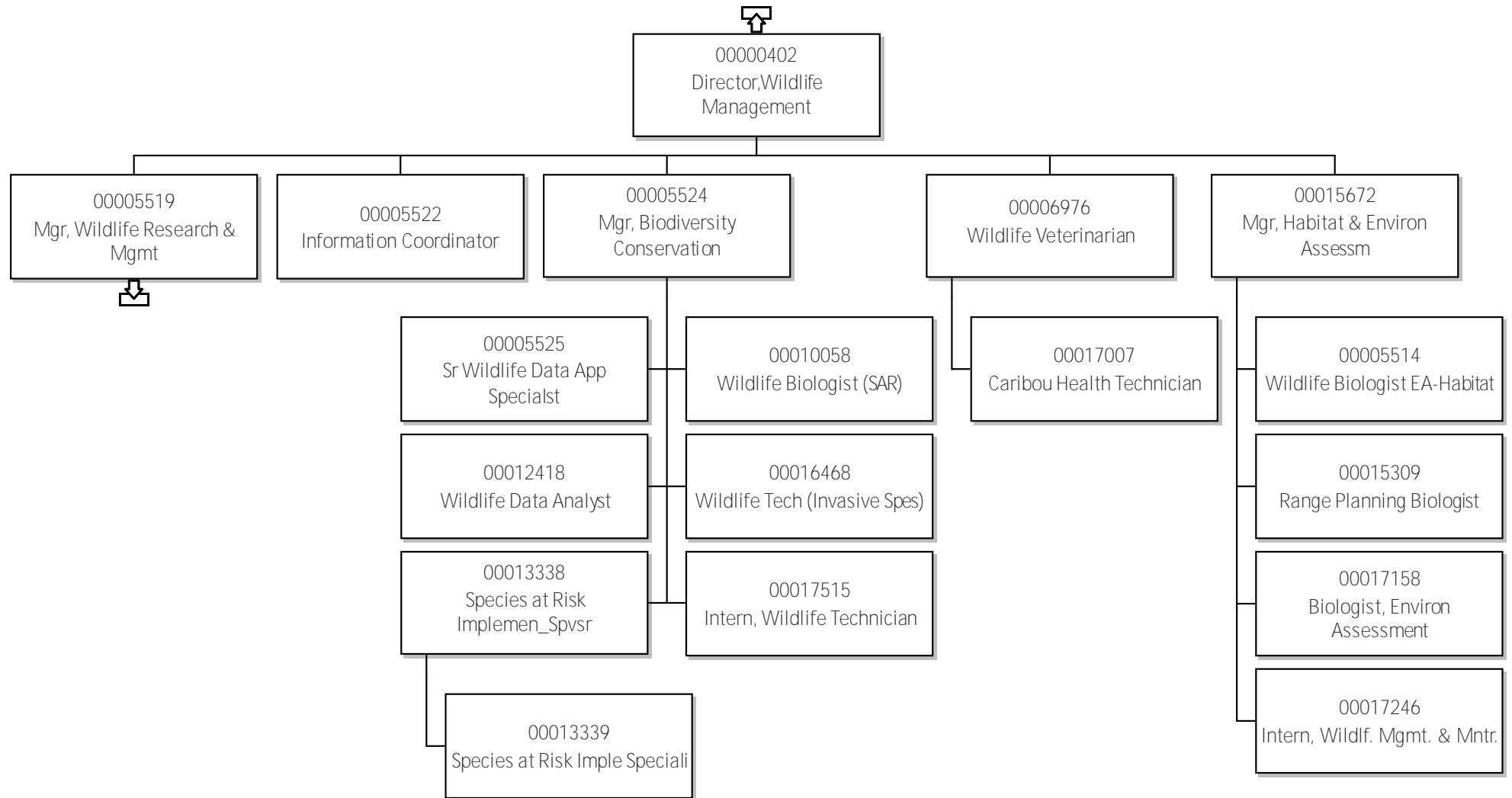
Manager, Conservation Planning.....	26
ADM Reg,Assessment,&Authorizat.....	27
Director, Land Mgmt & Administ.....	28
Director, Regulatory & Permitt.....	29
Director Impact Assessment & S.....	30
Director, Finance.....	31
ADM Regional Operations.....	32
Superintendent L&W, South Sla.....	33
Regional Superintendent, Sahtu.....	34
Manager, Forestry Operations.....	35
Manager Wildlife & Environment.....	36
Superintendent W&FM, BDel.....	37
Forest Officer.....	38
Manager Wildlife & Environment.....	39
Superintendent W&FM, South Sla.....	40
Manager Wildlife & Environment.....	41
Crew Coordinator.....	42
Manager, Forestry Operations.....	43
Superintendent, L&W, BeauDel.....	44
Regional Superintendent DehCho.....	45
Manager, Forestry Operations.....	46
Forest Officer.....	47
Wildfire Technician.....	48

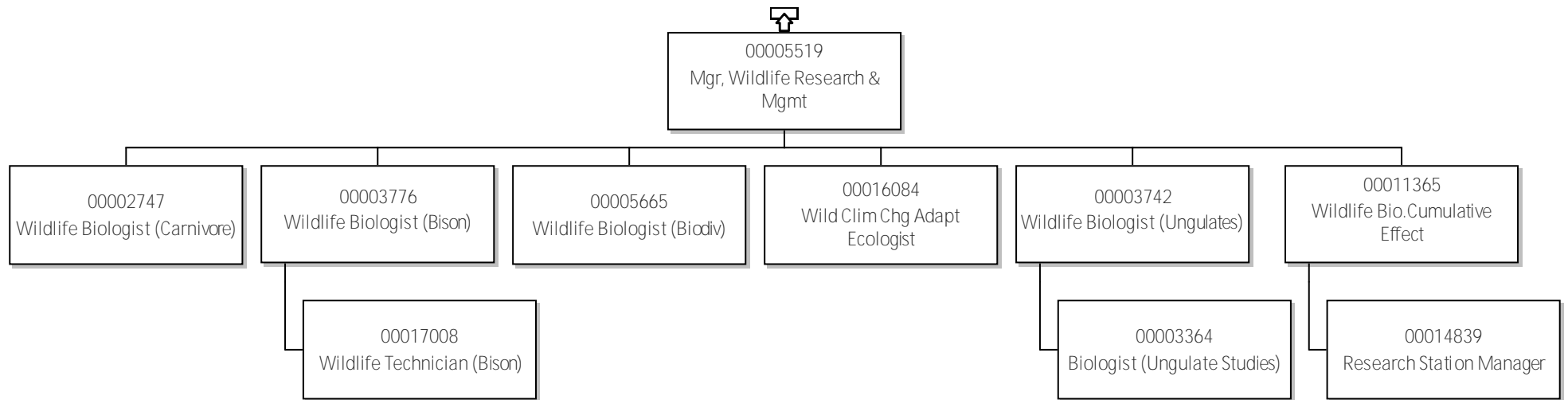
Contents Continued

Manager Wildlife & Environment.....	49
Superintendent W&FM, North Sla.....	50
Manager Wildlife & Environment.....	51
Manager, Forestry Operations.....	52
Superintendent L&W, North Sla.....	53

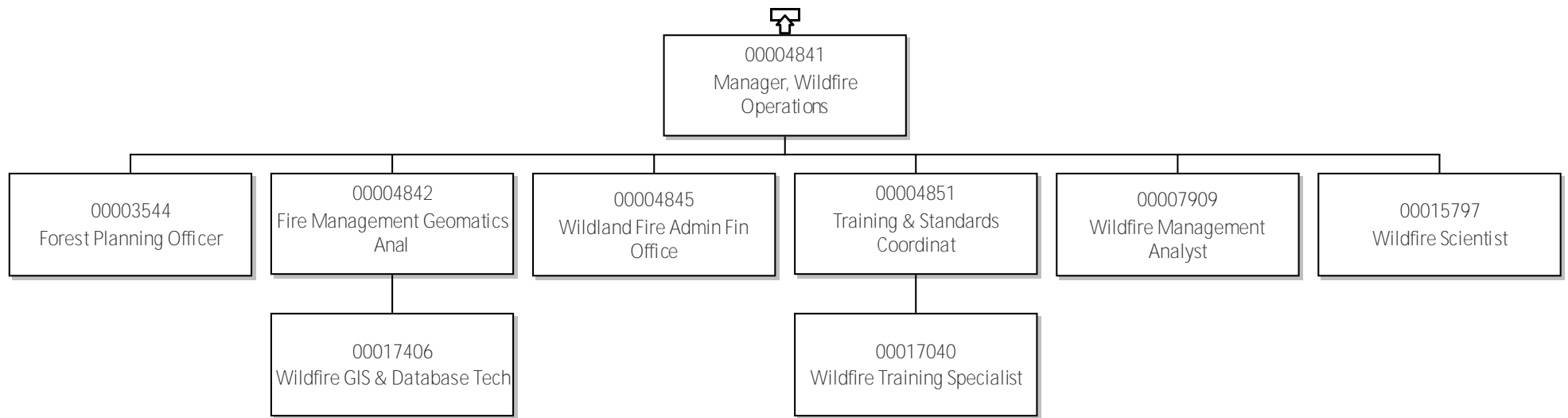


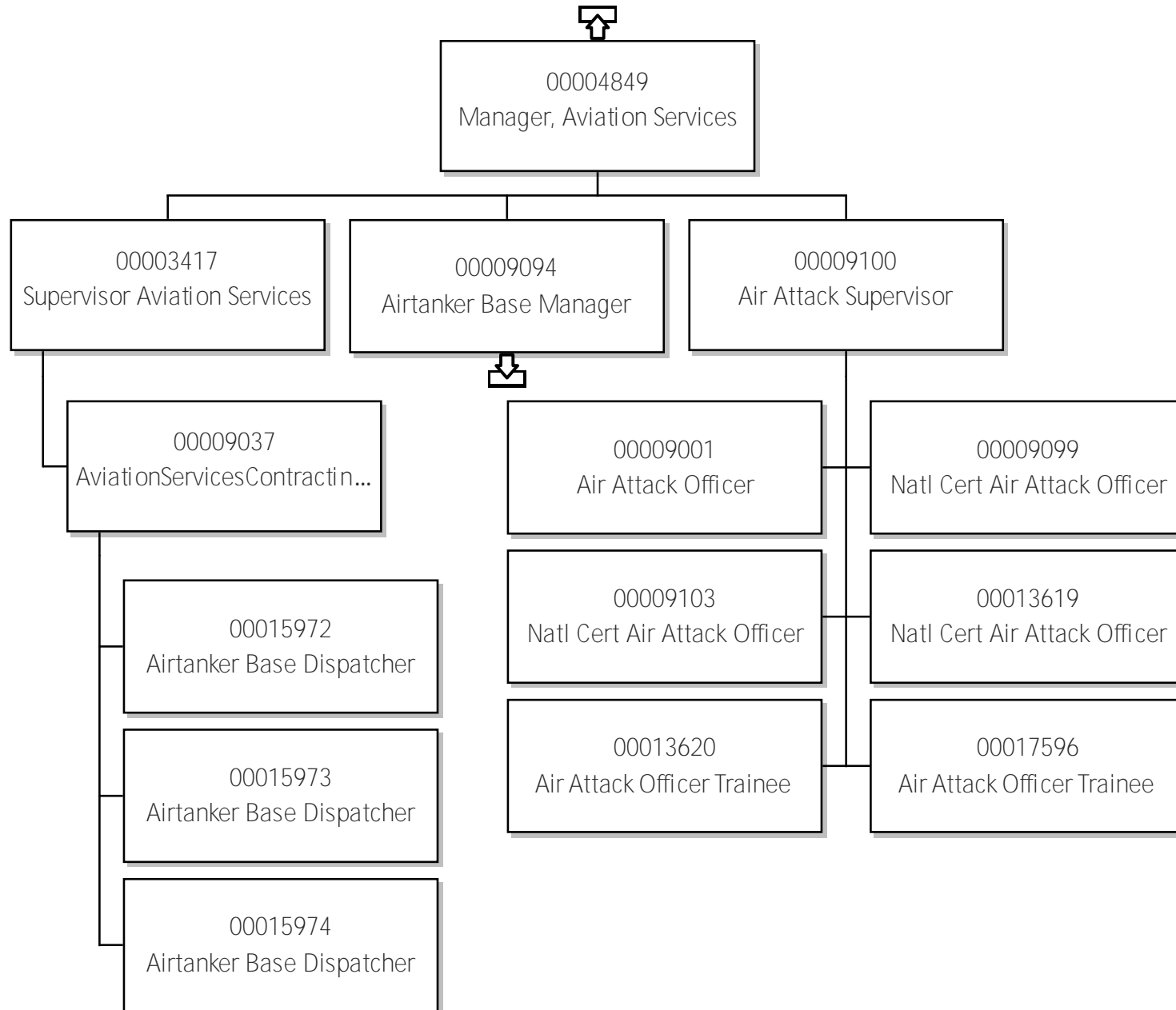


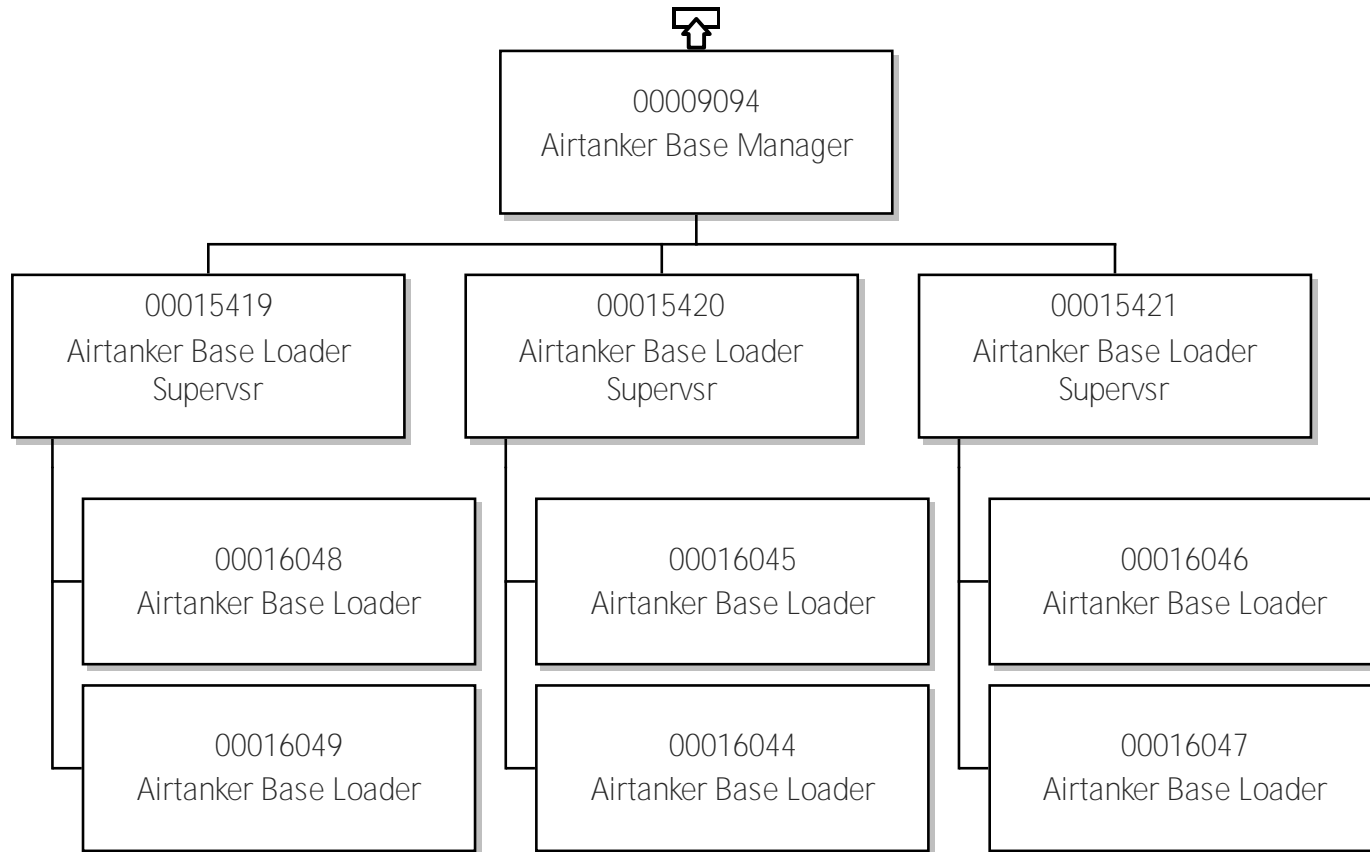


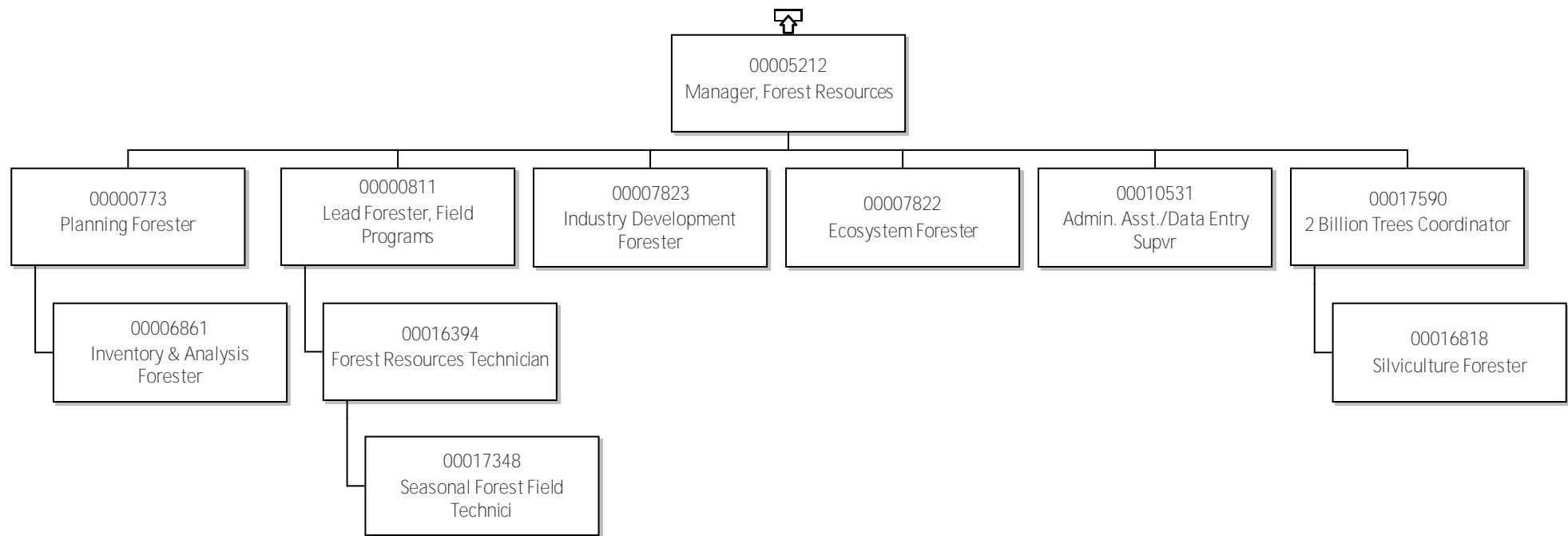


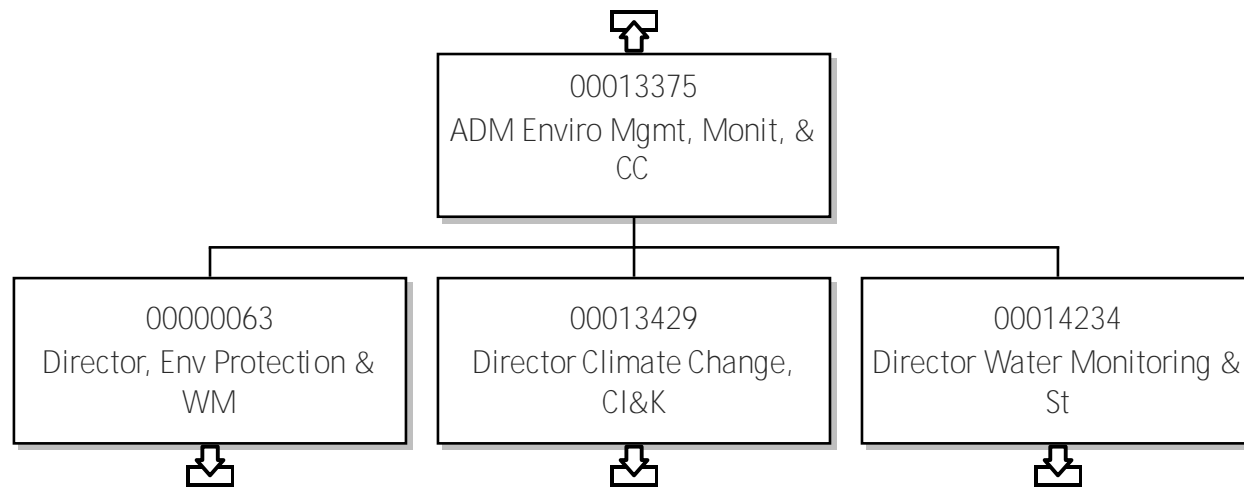


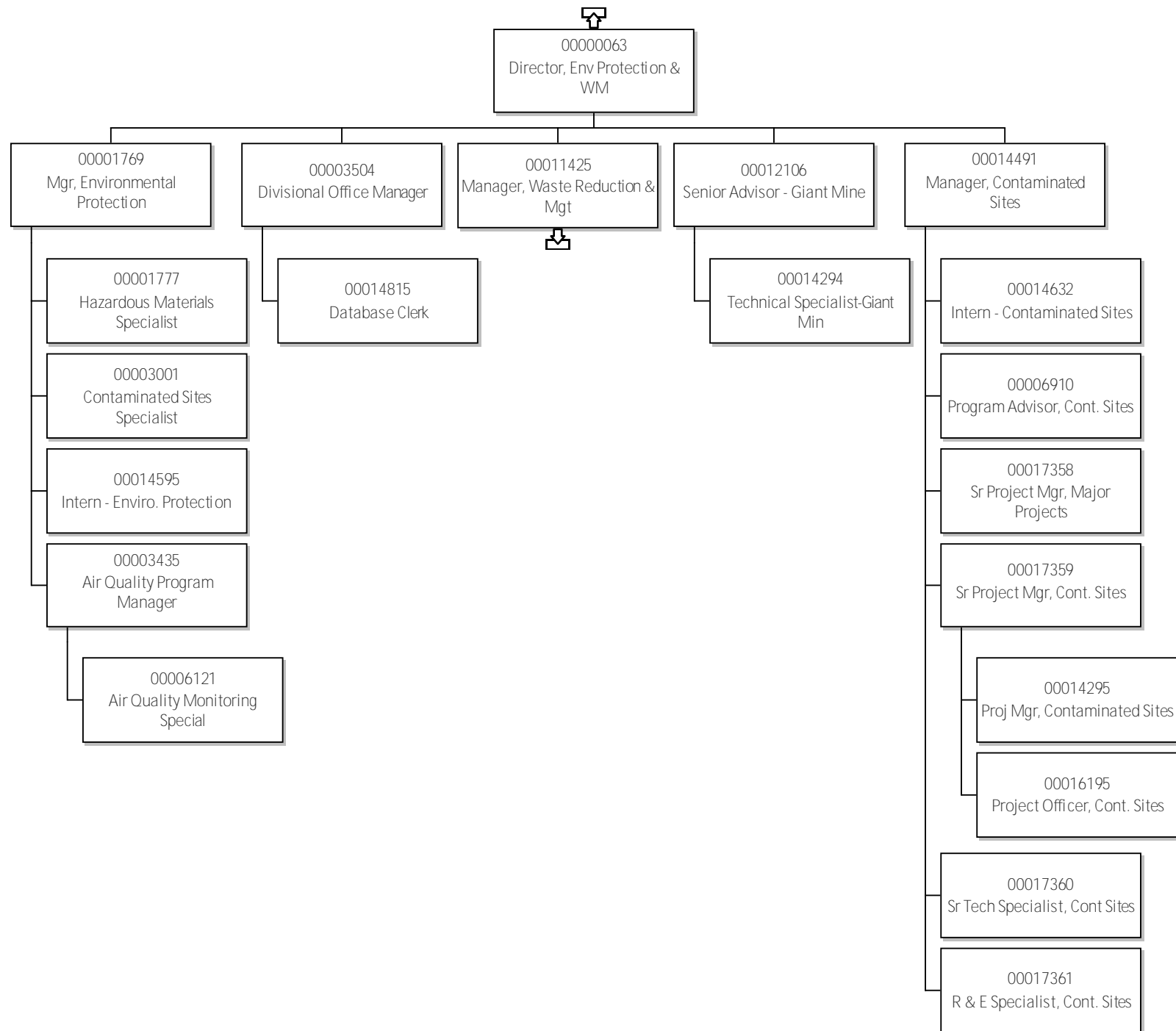


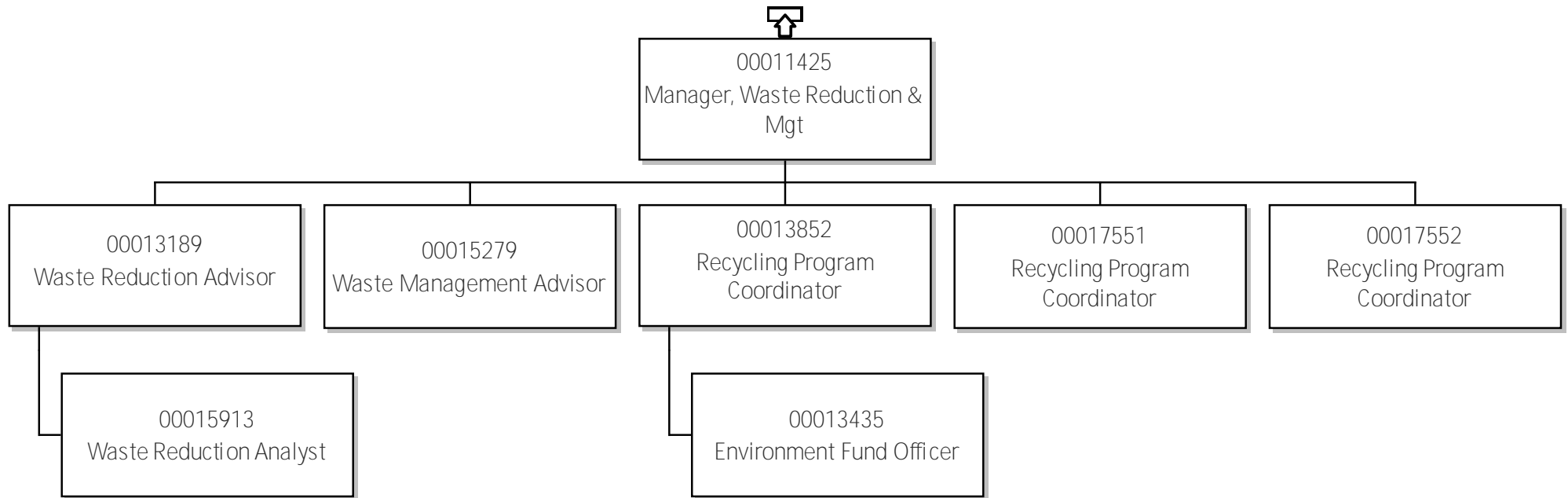


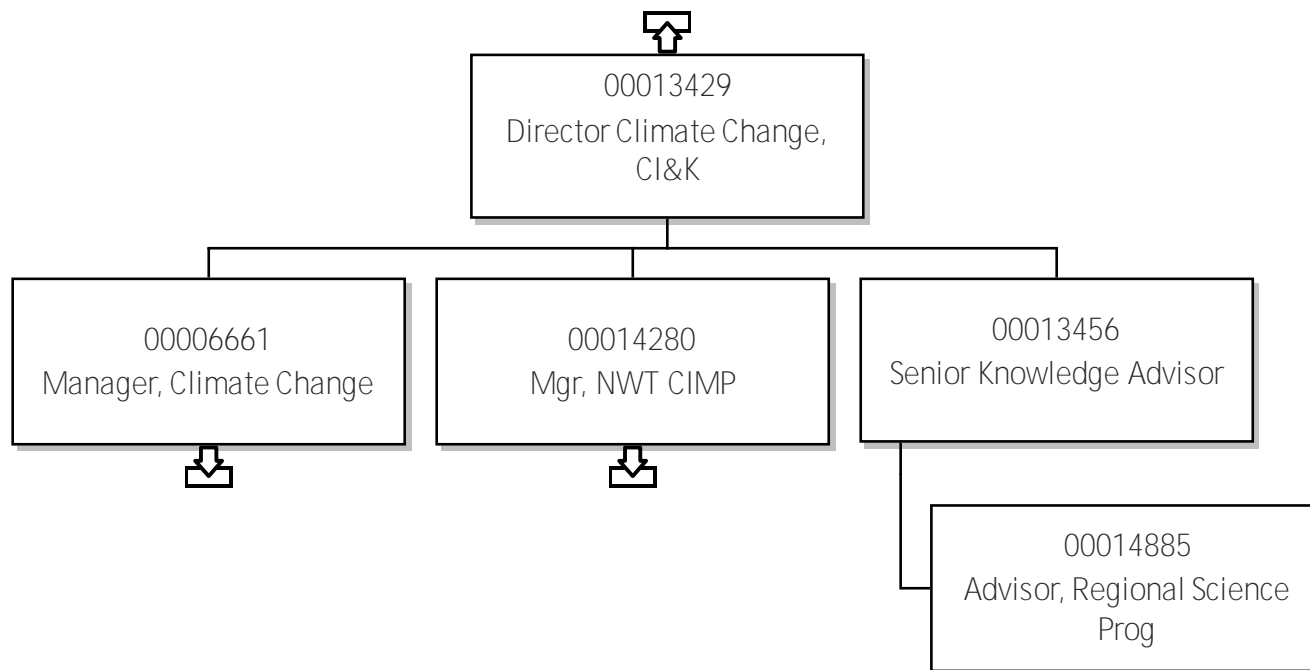


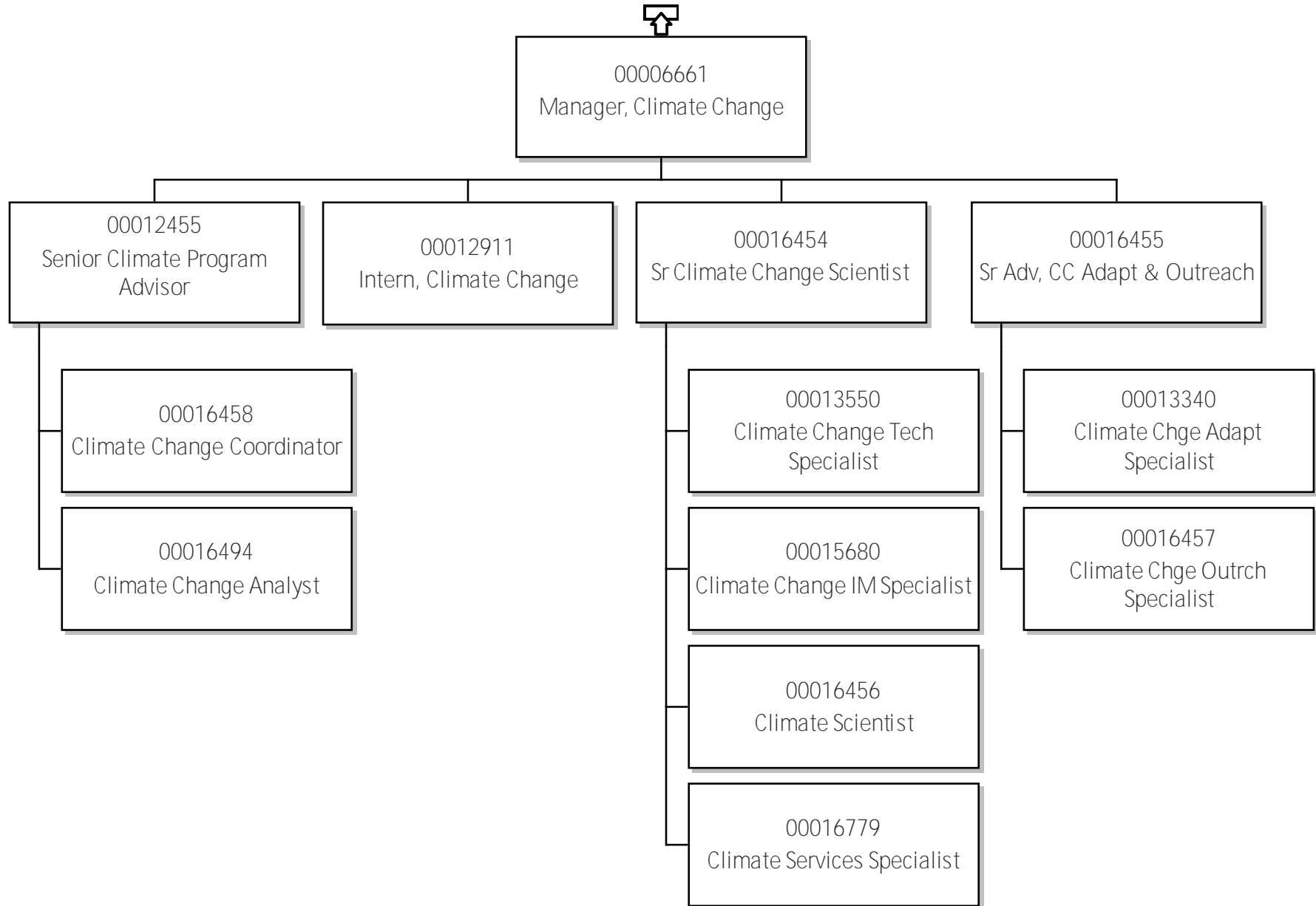


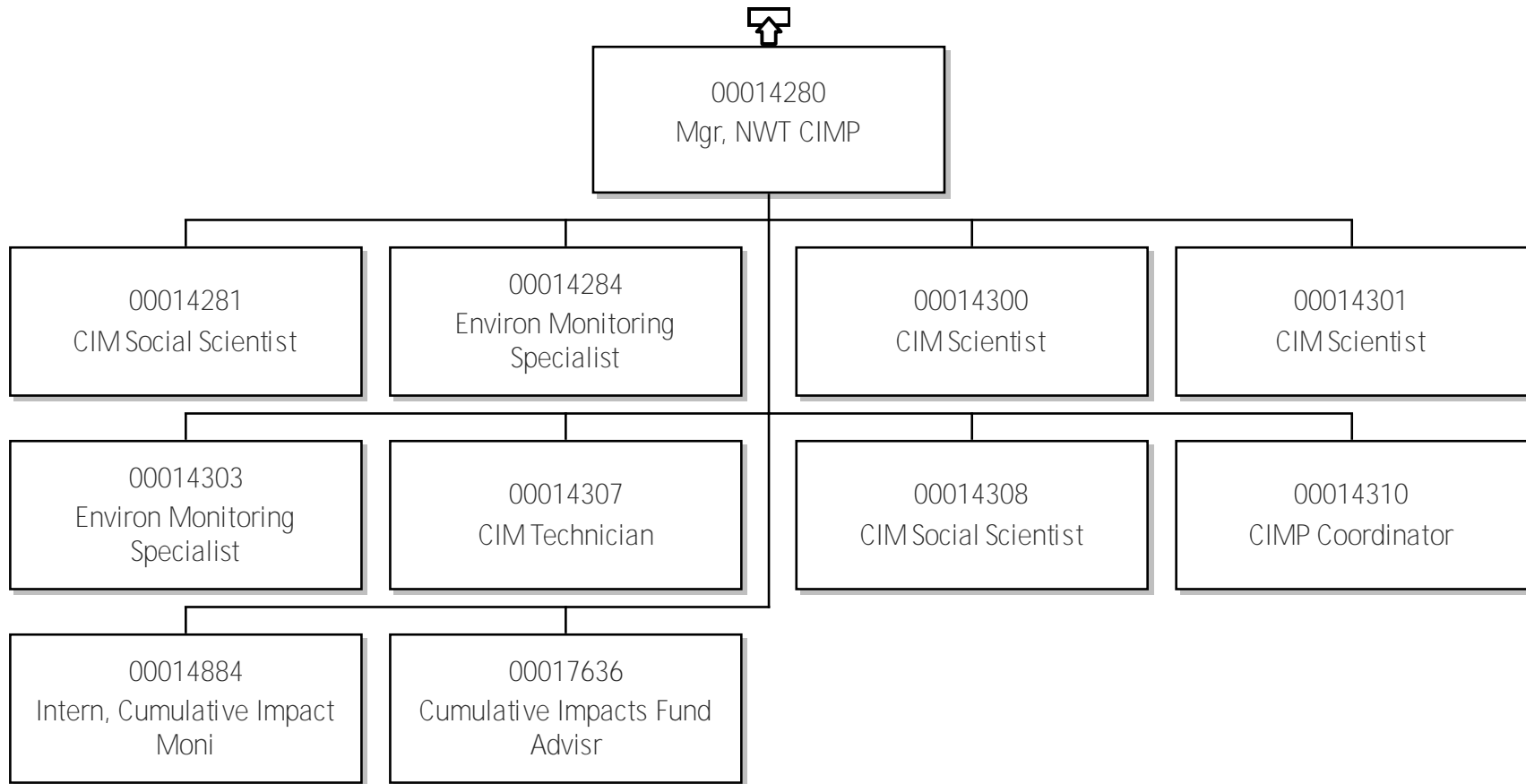


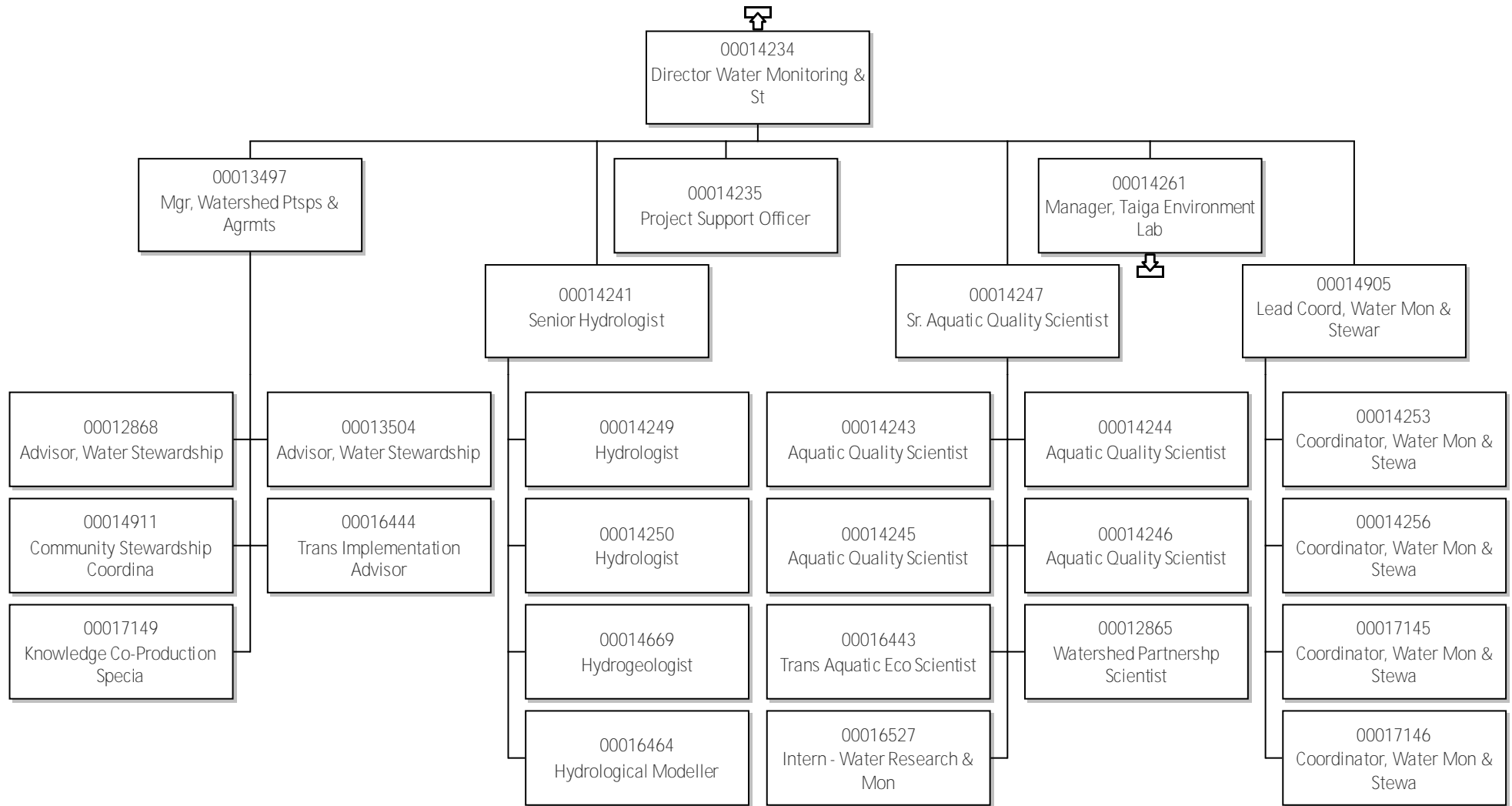
23-Environment & Climate Change
Director, Env Protection & WM

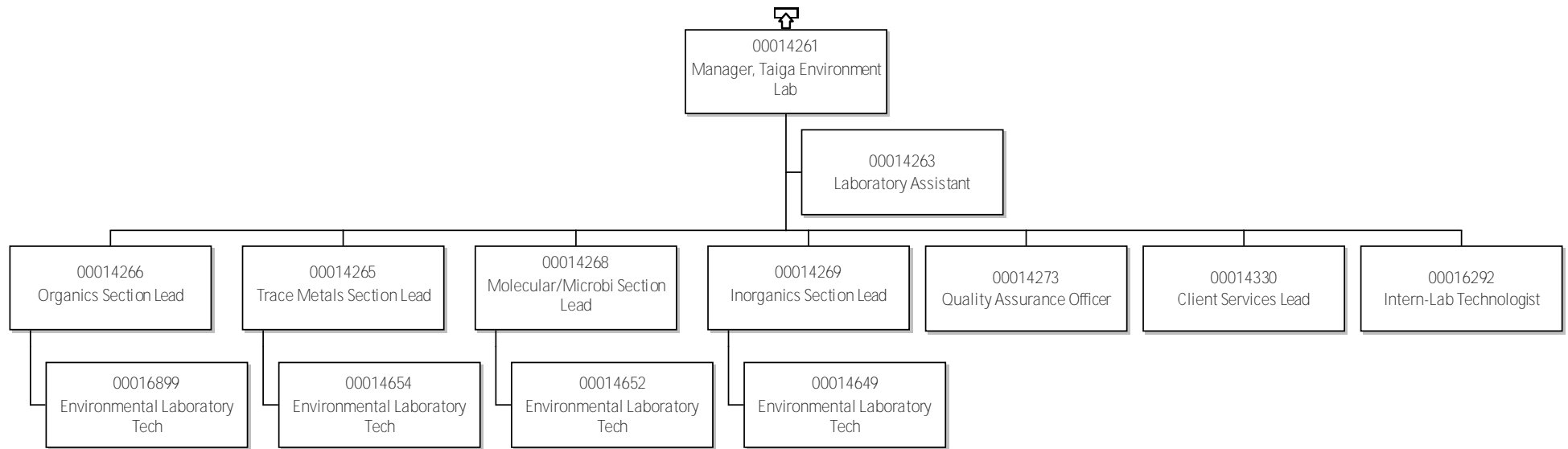


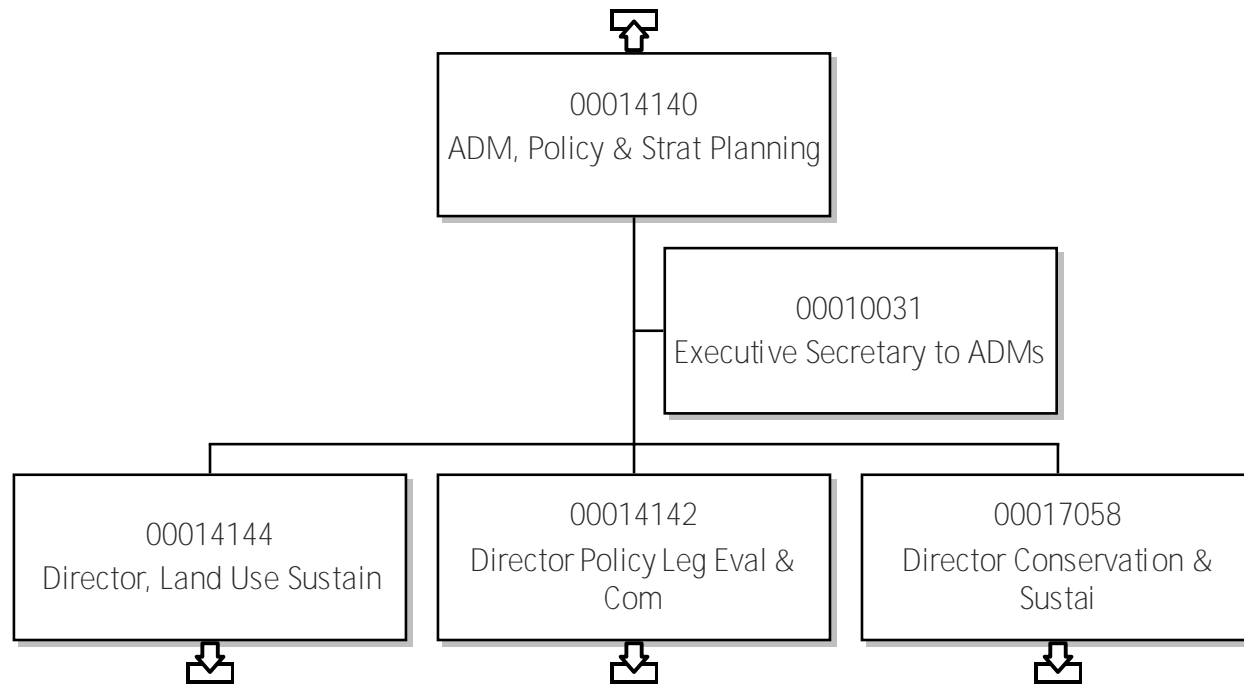


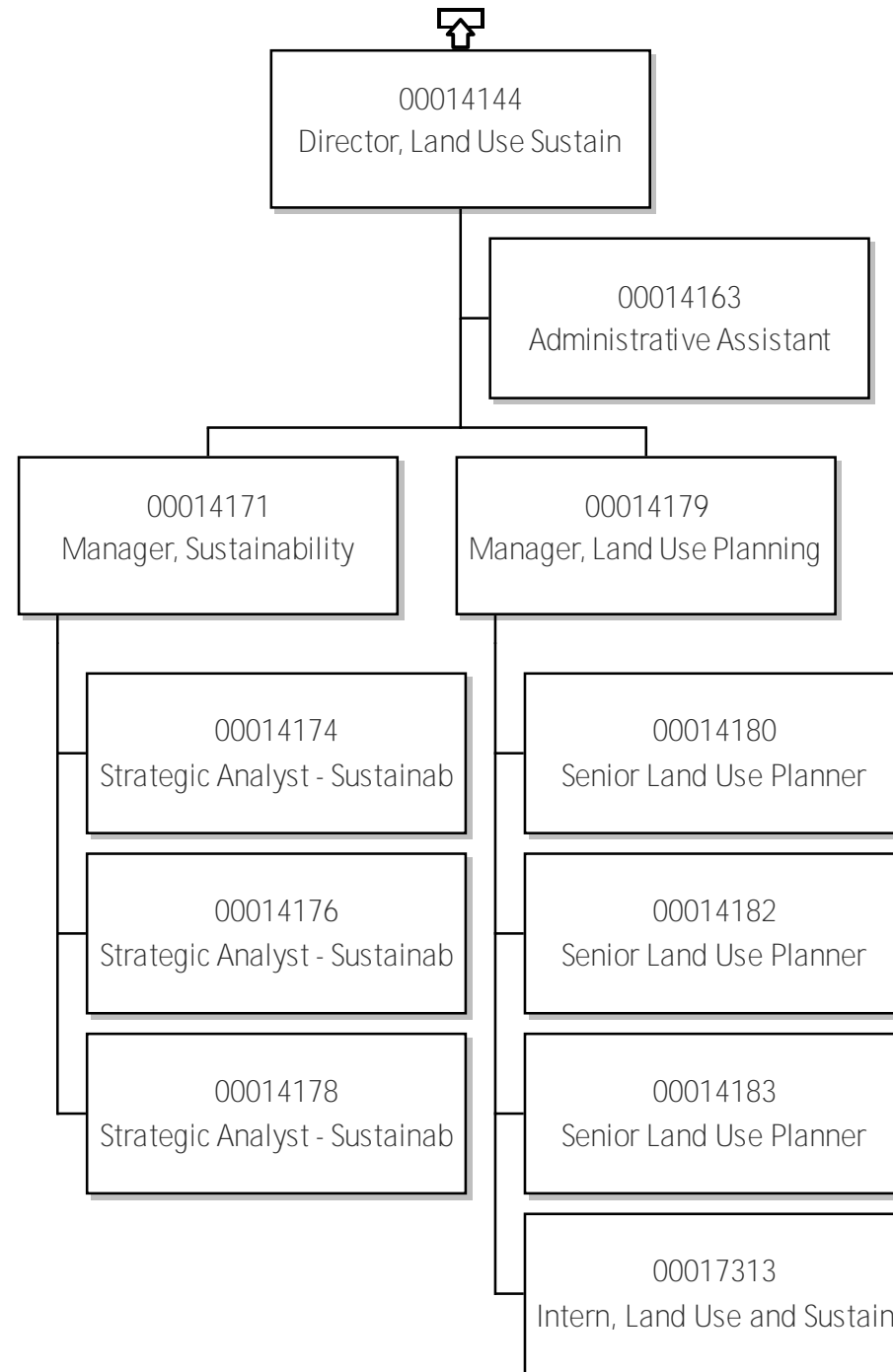






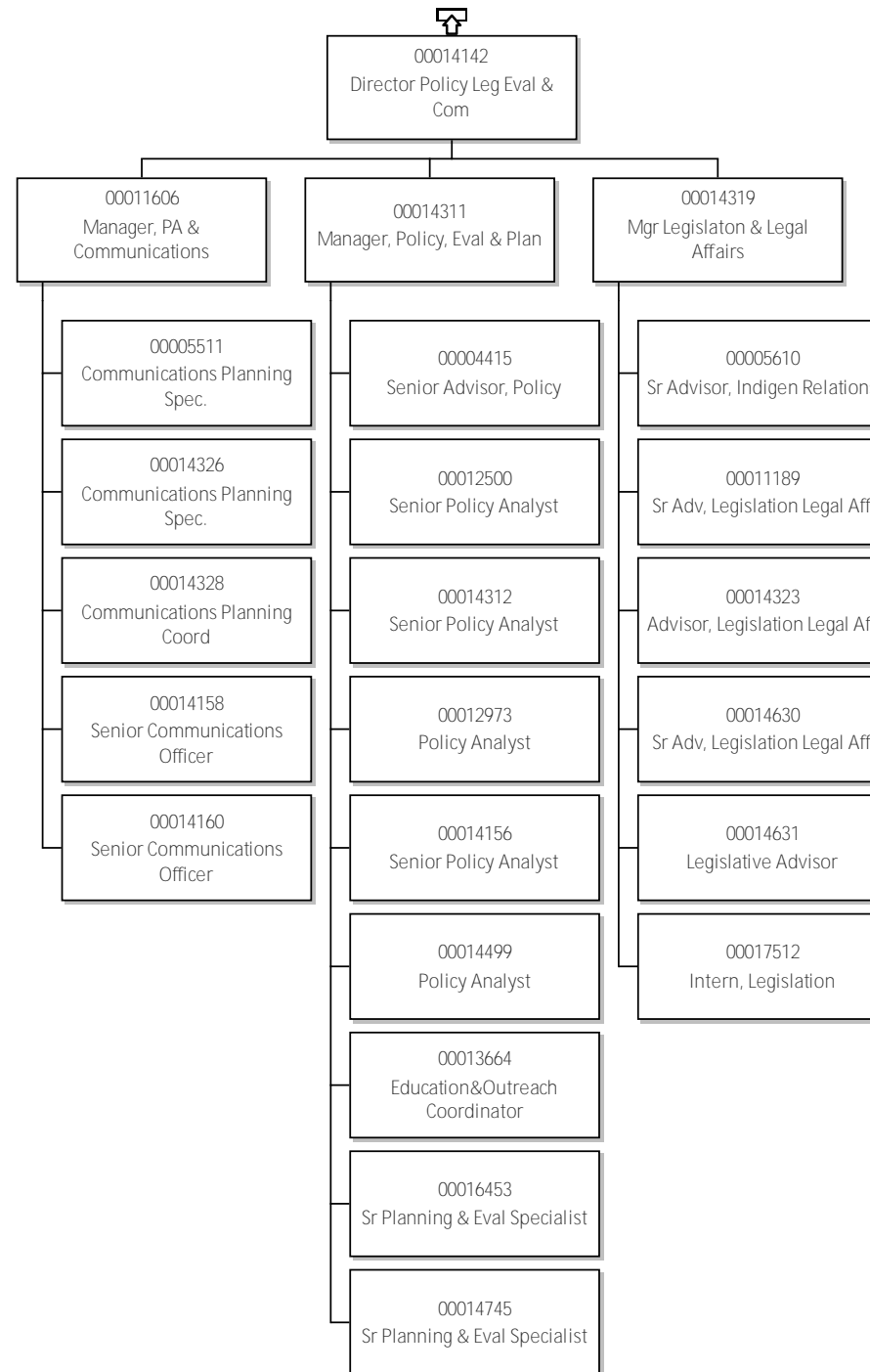


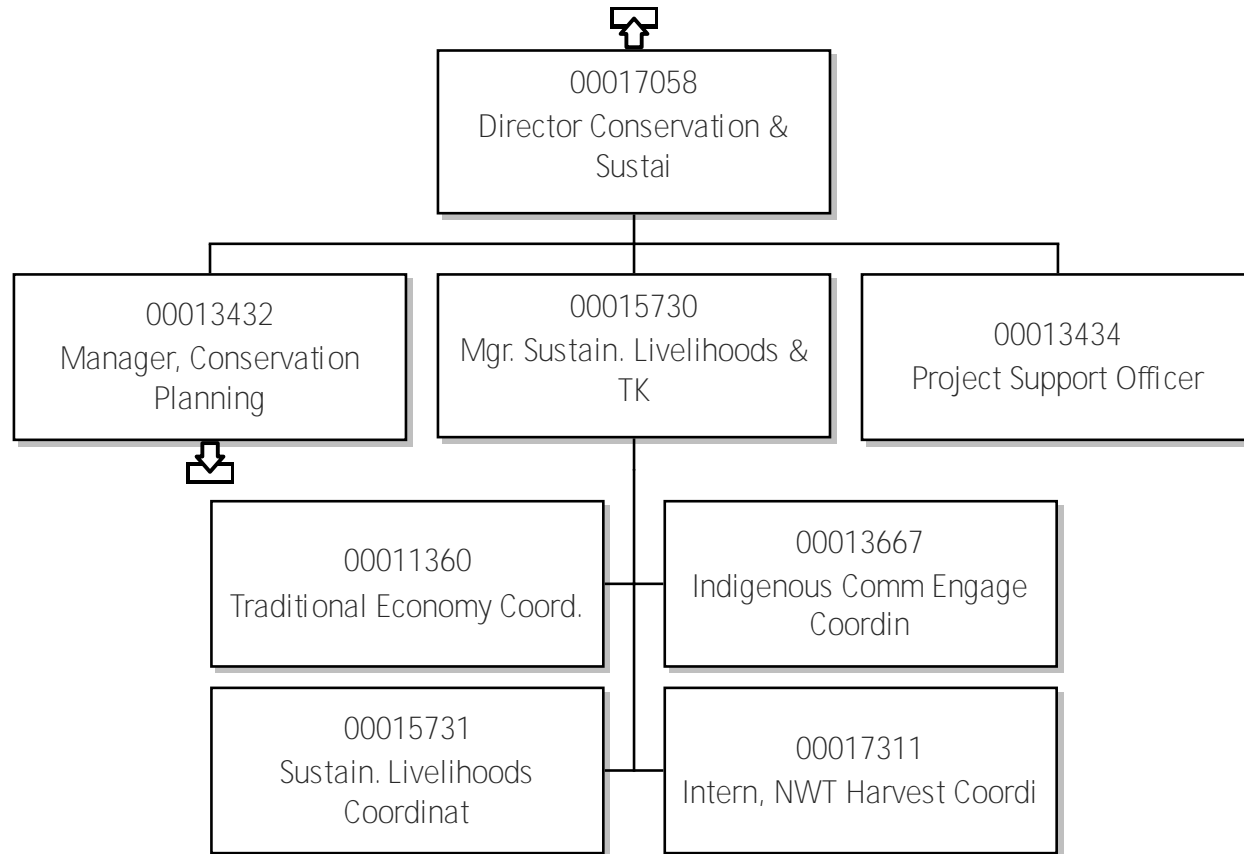


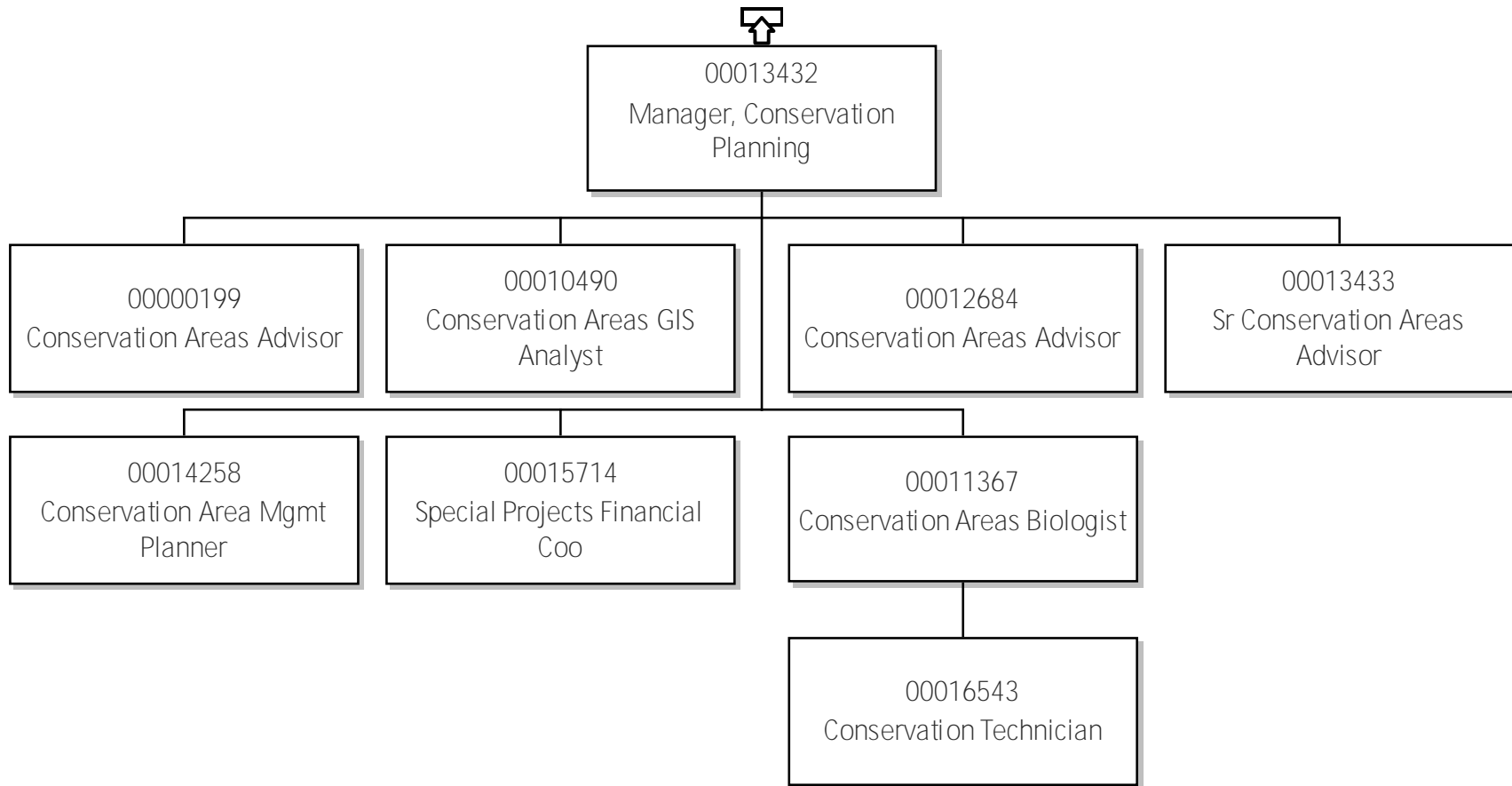


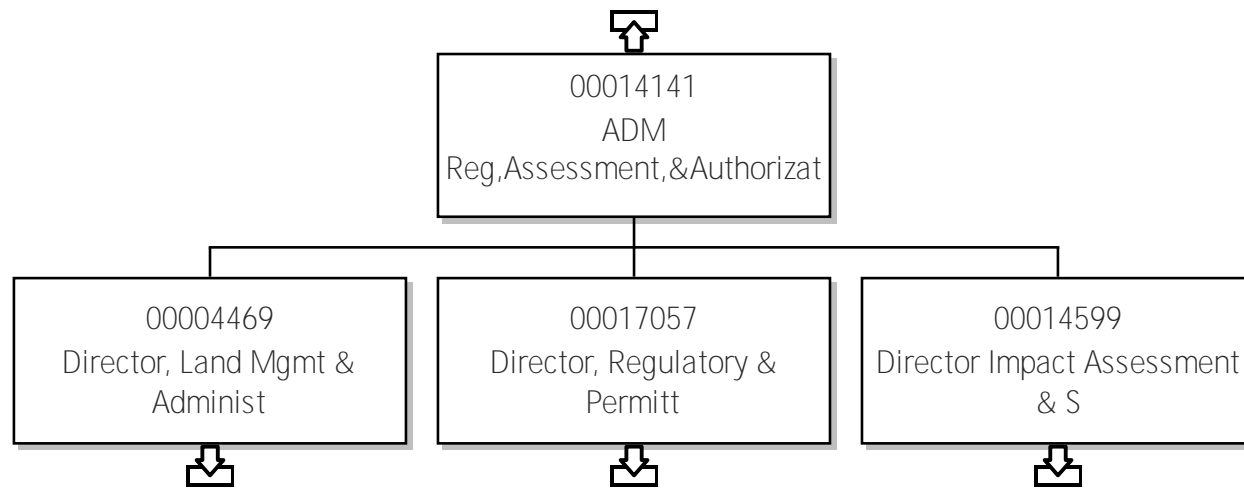
23-Environment & Climate Change

Director Policy Leg Eval & Com









23-Environment & Climate Change
Director, Land Mgmt & Administ